

TEXAS TECH UNIVERSITY
HEALTH SCIENCES CENTER

FACT BOOK

Seventh Edition

December, 2000
Prepared by the Office of the
Vice President for Fiscal Affairs

PREFACE

PREFACE

The Office of the Vice President for Fiscal Affairs is pleased to provide the Texas Tech University Health Sciences Center with a Fact Book. This edition is the seventh annual issue produced by this office as a service to the Health Sciences Center.

TABLE OF CONTENTS

TABLE OF CONTENTS

PREFACE
TABLE OF CONTENTS
HISTORY

SECTION I: ORGANIZATIONAL CHARTS

- A. Organizational Chart - Health Sciences Center
 - B. Organizational Chart - Vice President for Fiscal Affairs
 - C. Organizational Chart - Vice President for Health Policy & Public Affairs
 - D. Organizational Chart - Vice President for Operations & Student Support Services
 - E. Organizational Chart - Vice President for Health Care Systems
 - F. Organizational Chart - Vice President for Rural & Community Health
 - G. Organizational Chart - Vice President for Information Technology/Chief Information Officer
 - H. Organizational Chart - Graduate School of Biomedical Sciences
 - I. Organizational Chart - School of Allied Health
 - J. Organizational Chart - School of Medicine
 - K. Organizational Chart - School of Nursing
 - L. Organizational Chart - School of Pharmacy
-

SECTION II: PROGRAMS

- A. Academic Programs by Campus
-

SECTION III:**STUDENT INFORMATION**

- A. Enrollment Trends
 - B. Enrollment Trends by School
 - C. Enrollment by Campus
 - D. Enrollment by Ethnicity & Gender (Total Enrollment)
 - E. Enrollment by Ethnicity & Gender (By School)
 - F. Admission Statistics
 - G. Pass Rates (By School)
 - H. Financial Aid Information
-

SECTION IV**RESIDENT INFORMATION**

- A. Enrollment Statistics for Residency Programs (School of Medicine)
 - B. Enrollment Statistics for Residency Programs (School of Pharmacy)
 - C. Resident Distribution (School of Medicine)
-

SECTION V**DEGREES AWARDED B**

SECTION VIII**FINANCIAL INFORMATION**

- A. Current Funds Revenues
 - B. Current Funds Expenditures
 - C. Operating Budget History
-

SECTION IX**SPACE INFORMATION**

- A. Facilities Inventory Report
 - B. Leased Space Report
 - C. Campus Maps
-

SECTION X**ALUMNI INFORMATION**

- A. Graduate Specialties
 - B. Geographic Distribution of Alumni by School
-

SECTION XI**MEDICAL PRACTICE INCOME PLAN**

- A. Misc.
-

SECTION XII**PERFORMANCE MEASURES**

- A. Performance Measures
-

HISTORY

TEXAS TECH UNIVERSITY HEALTH SCIENCES CENTER

History

The Texas Tech University School of Medicine was created by the 61st Texas Legislature in May, 1969 as a multi-campus institution with Lubbock as the administrative center and with regional campuses at Amarillo, El Paso, and Odessa. In 1979, the charter was expanded to become the Texas Tech University Health Sciences Center, leading the way for establishment of the Schools of Nursing, Allied Health and the Graduate School of Biomedical Sciences. In 1993, the legislature authorized the establishment of a Pharmacy School to be located in Amarillo, with the Lubbock campus offering the first two years of the standard pharmacy curriculum and the Amarillo campus offering the final four years of the standard curriculum leading to the Pharm. D. degree. In addition, Allied Health programs were also expanded to Amarillo and the Permian Basin. The five schools are committed to regionalized, multi-campus educational experiences, and to the related biomedical research, graduate studies, patient care and community service required of a Health Sciences Center. A primary effort is made to achieve a balanced group of students with qualified minority students, diverse age groups, and heterogeneous backgrounds in educational and life experiences. A special effort is made to recruit applicants from West Texas and from rural and border communities.

The Health Sciences Center has as its major objectives the provision of quality education and the development of academic, research, patient care, and community service programs to meet the health care needs of the 108 counties of West Texas, which comprise 50% of the land mass and 13.9% of the population of the total state. This 131,000 square mile service area and population of 2.55 million has been, and remains highly underserved by health professionals and accessible health care facilities, despite the substantial and meaningful contribution made by our institution. Demographic shifts in West Texas populations, as well as socioeconomic and epidemiologic characteristics of its sub-groups create major and specific demands for service. While education of students and residents remains the primary focus of the institution, there has been an important impact on the health status of West Texas. The lack of a single locus of population density has resulted in the regionalization of medical and health care education and patient care on four geographically separated campuses. In providing an excellent quality undergraduate, graduate, and continuing health professional education at each site, the health needs of the larger community have been better met and relevant indices of health status demonstrate significant improvement.

The growing evidence confirms that the TTUHSC.3885 the subd7 (of) TaTD 0 Tc Tj 16.25 Schoole, tM TDine is aceedplishadua5 0 miinuine, tealth pdua09

as such functions as the Chief Executive Officer for the institution. During the 76th Texas Legislative Session, Senate

Service was created in 1993 to serve as an advocate and focal point for customer service issues. The office serves under the Chancellor's Division and provides services to the university and the health sciences center. The office provides services in four key areas: internal consulting, employee and organizational development programs, employee recognition, and a resource library. The Office of Quality Service works with departments and top leadership to focus on systematic problem solving to remove barriers to quality service and improve the service systems affecting internal and external customers. The office also coordinates an annual, institution-wide quality service recognition program, the Texas Tech Quality Service Awards, for the staff of the university and the health sciences center. The Texas Tech Quality Service Award and the Chancellor's Award of Excellence program were kicked off in December, 1996. Employees who have been at Texas Tech in a benefits-eligible position for two years, who have completed the SERVICEplus educational program and who demonstrate excellence in service can be selected as Quality Service Award winners or Chancellor's Award of Excellence winners. Individuals and teams are recognized in an annual ceremony hosted by the Office of the President and the Office of the Chancellor. These awards may be presented to an individual or team. Honorees receive a plaque, certificate and a monetary award from \$500 to \$1,500.

The Health Sciences Center is continually striving to make the institution and its programs the most cost effective possible. This has been particularly important for the past few years when this young institution has been growing and developing its programs. In 1985, general revenue made up more than 50% of the total operating budget of the Health Sciences Center. Now in fiscal year 2001, general revenue is approximately 24.7% of the total budget. Even though the Health Sciences Center has been able to sustain the growth of its schools and programs, adequate levels of state appropriated funds are essential to accomplish the central mission of providing health care education of the highest quality.

The Health Sciences Center is proud of the accomplishments that have been achieved by this young institution. Some of these include:

SCHOOL OF MEDICINE

- Through June, 2000, the School of Medicine has graduated 2,199 physicians. Over the past nine years, approximately 59% of graduates have remained in Texas for complete residency training, and an average of 25% of School of Medicine graduates have remained in a Texas Tech program for residency training. In 2000, 24% of graduates selected Texas Tech School of Medicine residencies.
- Twenty percent of the practicing physicians in West Texas are Texas Tech medical school and/or residency graduates.
- Over the past three years, an average of 57% of all medical school graduates have elected to enter the primary care specialties of Family Medicine, Internal Medicine, Obstetrics and Gynecology, and Pediatrics. In 2000, 56% of graduates elected primary care specialties.

- Each of the four TTUHSC campuses has been shown to place the majority of its program graduates who stay in West Texas within a 75 mile radius of the campus. The four campus system therefore has a positive impact on the geographic distribution of physicians throughout West Texas.
- In the summer of 1998, the School of Medicine began its

School of Medicine provided 558,521 clinical visits of care to 206,540 ambulatory patients. The School also served 45,465 inpatients in its affiliated hospitals. The four campuses provided 299,470 clinical visits of charity care to 83,192 patients valued at \$53,184,197.

GRADUATE SCHOOL OF BIOMEDICAL SCIENCES

- The Graduate School of Biomedical Sciences was established in 1991 to coordinate the training of biomedical scientists in six M.S. and Ph.D. programs currently operating in the School of Medicine. It provides educational opportunities for students from this region who seek research careers in the biomedical sciences to advance our knowledge about normal and diseased conditions in humans.
- The Graduate School of Biomedical Sciences' seven graduate programs have a Fall, 2000 enrollment of 52 students in the seven programs and 12 Graduate Interdisciplinary students taking a course for one semester. The School has graduated 46 M.S. and 99
 - The Graduate School of Biomedical Sciences has a Fall, 2000 enrollment of 52 students in the seven programs and 12 Graduate Interdisciplinary students taking a course for one semester. The School has graduated 46 M.S. and 99

- The Graduate Program offers a Master of Science in Nursing with a focus on Education or Administration in conjunction with a clinical focus in Community Health or Gerontics. The Master of Science in Nursing program's greatest increase in enrollment is in the Family Nurse Practitioner Program and the Post-Masters Family Nurse Practitioner Program. This can be attributed to its excellent reputation and the increased number of baccalaureate nursing graduates in the area. In 1995, a collaborative program with The University of Texas at Tyler School of Nursing was established to prepare Family Nurse Practitioners for the Tyler area. Additional practitioner programs are under consideration. The Nurse Practitioner courses are available via telecommunications.
- The Research Program offers assistance to faculty and students in conducting research, as well as applying for external and internal funding.
- The School of Nursing, in collaboration with the School of Nursing at The University

- The Clinical Laboratory Science Program is the only one in the nation which offers students the opportunity to choose among options: (1) traditional CLS curriculum; (2) pre-med option; and (3) business option. With the business option, a collaborative relationship with the College of Business Administration allows the student to earn a minor in Business and with only one year of post-baccalaureate study, an M.B.A. This option is available for students who aspire to supervisory and/or management positions in clinical labs.
- The School of Allied Health continues to receive hundreds of applications for admission.
- The 10 professional programs within the School are each independently accredited by a different accrediting agency. Thus, at least one program is always in the self-study process. All existing programs are fully accredited with maximum allowable terms of accreditation.
- A “first in Texas” baccalaureate (B.S.) in emergency medical systems management began in 2000. This program provides a long sought-after opportunity for practicing EMT’s to complete an undergraduate degree while preparing to assume leader positions in management of pre-hospital care systems. This program complements our expanding relationship with community colleges throughout the region. The EMS program in the School also houses the Texas EMS Education Advisor function for the Texas Department of Health.
- Personnel shortages continue in many of the allied health professions. They are most severe in the disciplines of communication and personnel.

Department of Communication Disorders (B.S. and M.S.)
Speech Language Pathology (M.S.)
Audiology (Aud.D.)
Communication Disorders (B.S.)

SCHOOL OF PHARMACY

- Texas Tech University Health Sciences Center School of Pharmacy was established

HEALTH CARE SYSTEMS

During the 1993 Legislative session, the Texas Legislature established a Correctional Managed Health Care Advisory Committee (CMHCAC) and charged it with developing a managed health care delivery system to provide health care to Texas Department of Criminal Justice (TDCJ) offender-patients. The Committee established a contract with TTUHSC to provide health care for the TDCJ facilities in the Western part of the state. Of the approximately 130,000 inmates housed in TDCJ facilities, the Western sector has approximately 32,000 beds in 28 facilities at 19 sites. Included is a 550-bed psychiatric hospital located in Lubbock which opened in July 1995. A tertiary medical/surgical prison hospital adjacent to the psychiatric hospital opened September 1996 with medical/surgical care provided by the TTUHSC School of Medicine. TTUHSC is responsible for providing ambulatory care at the TDCJ facilities, developing Preferred Provider Networks and operating a telemedicine program.

Universities Health Plan (TUHP). TUHP is offered to State of Texas and higher education employees, retirees and dependents in Lubbock and several surrounding counties. Additionally, this office has spearheaded the development of several new lines of business for TTUHSC and participating community physicians. These products include Texas Universities Transplant Consortium, Texas Healthy Kids, the Children's Health Insurance Program (CHIP), and a health plan for TTUHSC residents and their dependents. This office also coordinates the participation of all four TTUHSC campuses in the Texas Department of Health's women and children's health initiatives in West Texas through the Title V Program. In recognition of the continued expansion in the correctional and managed health care areas, the office was reorganized and renamed the Office of Health Care Systems in December, 1999.

Other initiatives for Health Care Systems include:

- Pilot program to provide mental health services for Texas Mental Health and Mental Retardation (TDMHMR) facilities, and the U.S. Immigration and Naturalization Service;
- Local contractual agreements with Lubbock Regional MHMR and El Paso Life Management Center;
- Responsibility for case management activities for high risk pregnant women and children participating in Medicaid or Title V Programs;
- Provision of onsite health services for the 500-bed Ector County Jail;
- Management of the Texas Tech Diabetes Center. The Diabetes Center provides education and research initiatives to ensure comprehensive diabetes self-management education for persons with diabetes in Lubbock and the surrounding counties of West Texas and Eastern New Mexico. This program is being established in accordance with National Standards for Diabetes Self-Management Education Programs of the American Diabetes Association.
- Management of TTUHSC Mobile Mammography program, which focuses on providing breast screening to the citizens of West Texas through mammography and clinical breast examinations. The Mobile Mammography clinic is accredited by the American College of Radiology and certified by the Texas Department of Health and the Food and Drug Administration.
- HCS supports the concept of localized delivery of outpatient-based health care through ventures such as Texas Tech Medical Center Southwest (TTMCSW), Southwest Lubbock Surgery Center, and the Laser Surgery and Vision Institute. Located in the former Southpark Hospital campus, TTMCSW offers area consumers easy access to a broad range of primary care and the latest in outpatient surgical technologies.
- HCS supports, maintains and finances the Institutional Clinical Compliance Office for all governmental health care systems. This includes all four campuses and all schools. The Institutional Clinical Compliance Office is an integral part of Health Care Systems and is considered to be a top priority of the President of TTUHSC.

RURAL AND COMMUNITY HEALTH

Texas Tech University Health Sciences Center continues its longstanding commitment to rural health through the Office of Rural Health Planning and Research. With a declining but aging population, the continued loss of health care providers, and limited funding for health care, rural West Texans find it increasingly difficult to obtain primary and specialty health care. The Office of Rural Health Planning and Research serves as the TTUHSC liaison with communities and counties throughout rural West Texas, assists in the creation and implementation of rural health policies, acts as a rural health information clearinghouse, and helps to coordinate rural health care systems.

The Office incorporates the TTUHSC Center for Telemedicine. TTUHSC has pioneered the use of telemedicine in correctional settings and the technology holds great promise for improving health care access in rural Texas. The Vice President for Rural and Community Health serves as the medical director for telemedicine. Rural telemedicine initiatives are underway in schools, community clinics, rural hospitals and nursing homes.

COMPUTER SERVICES

Texas Tech University Health Sciences Center uses a wide range of information systems technologies to support its academic and service missions in order to further higher education and provide medical support to West Texas. TTUHSC has designed and utilizes state-of-the-art information systems technologies

HEALTHNET

Recognizing the need for our outreach programs, the Legislature provided funding for HealthNet, an integrated health care education and rural practitioner support network, to sustain the educational and clinical outreach support mission of the Health Sciences Center. HealthNet maintains three telecommunication networks, MedLink, ESN and TechLink, to extend the resources of the TTUHSC to West Texas communities and beyond through interactive telecommunications, distribution of accredited medical education, and extension of TTUHSC's academic programs.

- **TechLink**

The TechLink network connects classrooms and conference rooms on TTUHSC's four campuses. Using state-of-the-art compressed digital video and audio technology, the network provides live interactive capability among the four campuses for research, administrative, teaching and other educational support activities. Carrying more than 10,952 event hours in fiscal year 2000, the network:

 - maximizes the outreach and impact of limited faculty resources;
 - provides quality undergraduate and graduate courses to students on all campuses;
 - facilitates curriculum consistency and continuity; and
 - reduces faculty and student travel among the campuses.

- **MedLink**

The MedLink network utilizes compressed digital video and audio transmitted via satellite or terrestrial fiber optic lines to provide direct patient care and information to Texans. The MedLink network supports telemedicine activities through live interactive video consultations between medical specialists at all campuses of TTUHSC and primary care physicians, physician assistants, nurse practitioners and their patients in rural West Texas. The network facilitates full motion picture quality video interactions among all parties and the transmission of critical patient information including diagnostic data and images. The practice of medicine through telecommunication technologies has increased access to quality health care in underserved rural communities. The availability of telemedicine services plays a vital role in enabling the rural community infrastructure to remain viable and healthy.

- **Educational Satellite Network (ESN)**

The Educational Satellite Network is a satellite-based continuing education network, one-way video and audio.

system has reduced professional isolation and has enabled practitioners to be exposed to the latest developments in their respective fields, and

TEXAS JOURNAL OF RURAL HEALTH

The *Texas Journal of Rural Health*, a quarterly journal published by TTUHSC, is the only one of its kind in Texas. The Editor and Managing Editor encourage authors to submit relevant and current research studies, as well as legislative and/or health policy manuscripts. The purpose of the journal is to provide a forum for sharing ideas on rural health issues. Articles are accepted for possible publication throughout the year.

ORGANIZATIONAL CHARTS

TEXAS TECH UNIVERSITY
HEALTH SC

—

—

—

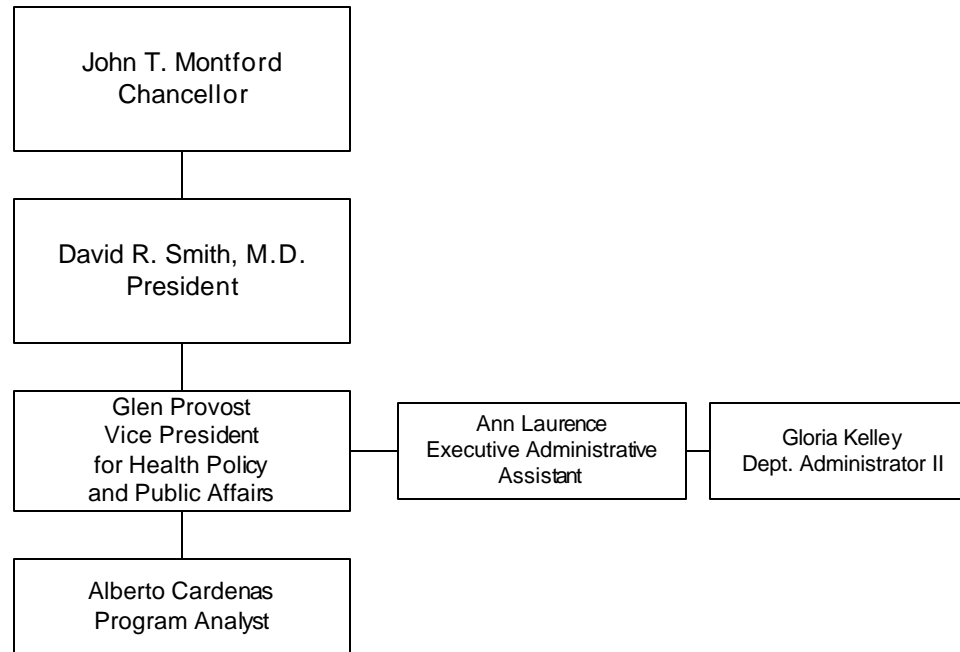
—

—

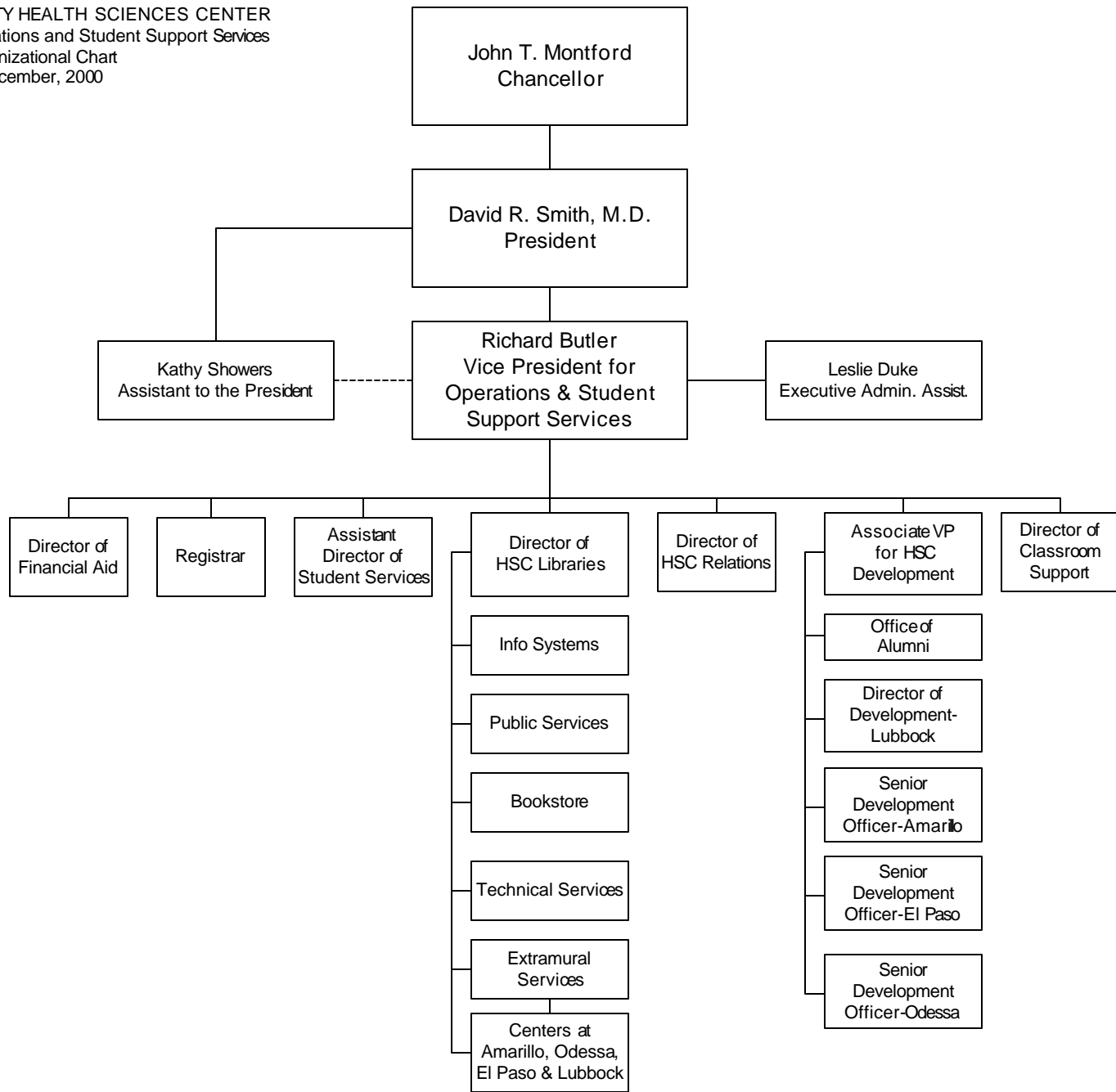
John T. Montford
Chancellor

Elmo M. Cavin

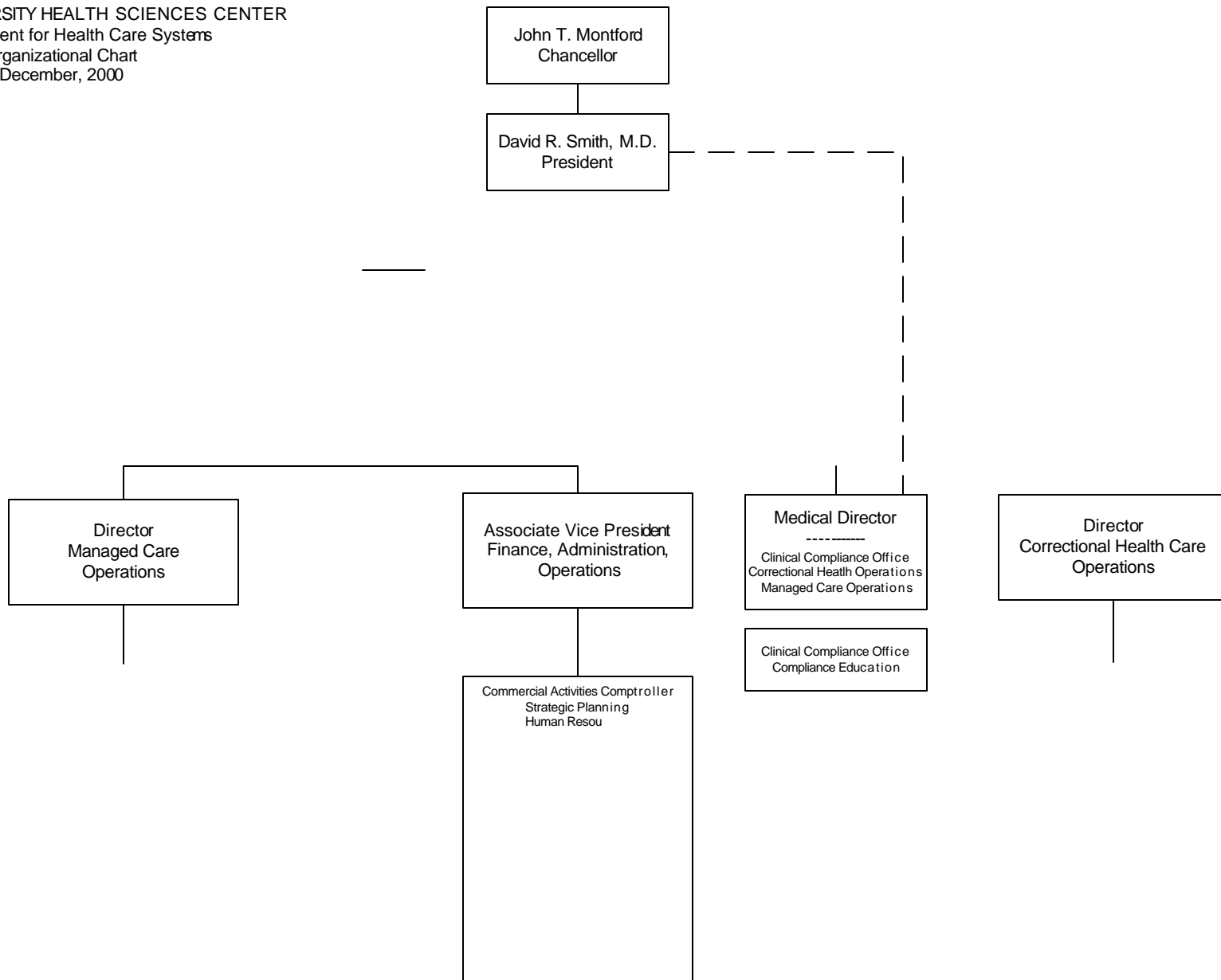
TEXAS TECH UNIVERSITY HEALTH SCIENCES CENTER
Vice President for Health Policy and Public Affairs
Organizational Chart
December, 2000



TEXAS TECH UNIVERSITY HEALTH SCIENCES CENTER
Vice President for Operations and Student Support Services
Organizational Chart
December, 2000



TEXAS TECH UNIVERSITY HEALTH SCIENCES CENTER
Vice President for Health Care Systems
Organizational Chart
December, 2000



David R. Smith, M.D.
President



TEXAS TECH UNIVERSITY HEALTH SCIENCES CENTER
Vice President for Information Technology
Organizational Cha

John T. Montford
Chancellor

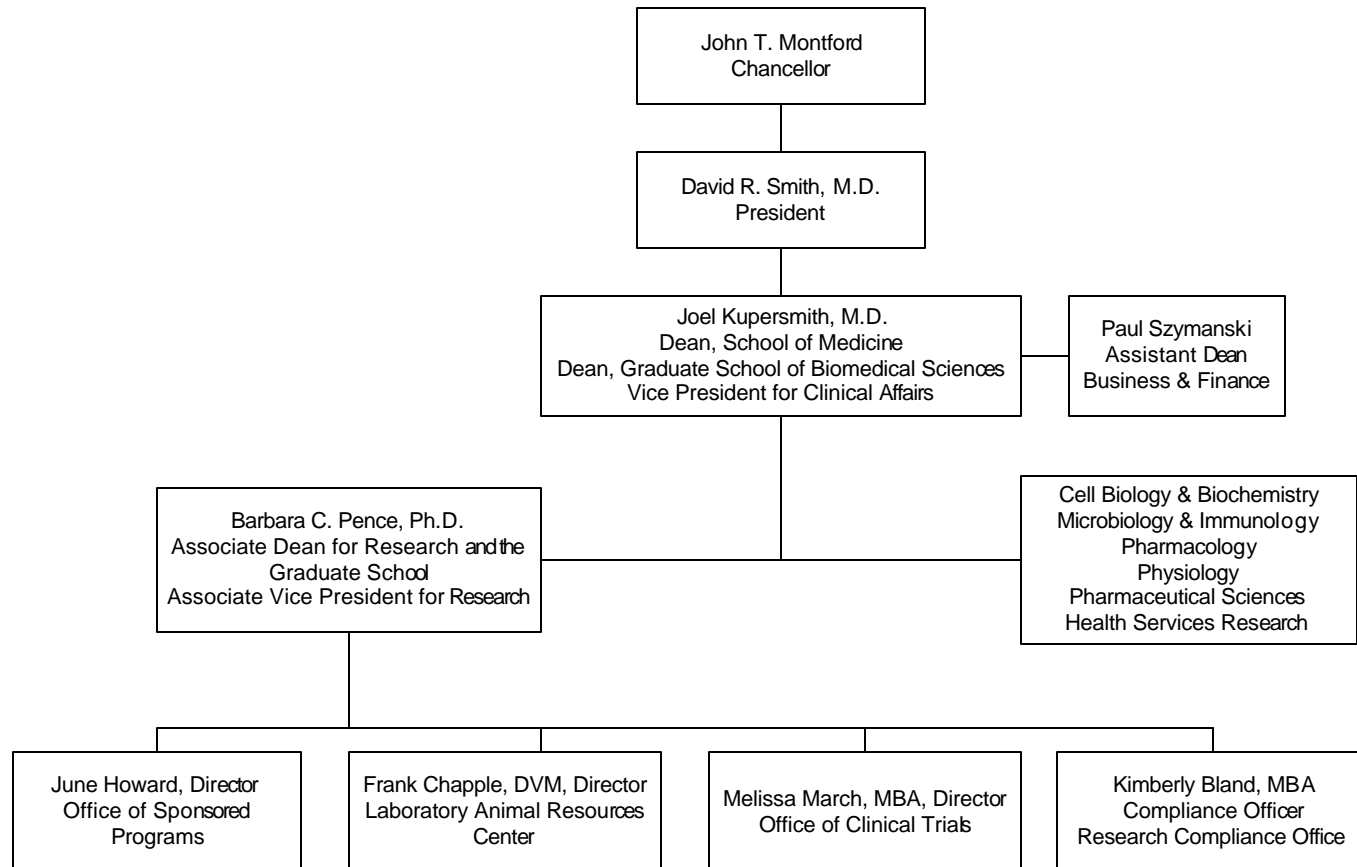
David R. Smith, M.D.
President

Michael Phillips, CIO
Vice President

Connie Luck
Senior Admin. Assistant

Director
Computer Services

TEXAS TECH UNIVERSITY HEALTH SCIENCES CENTER
Graduate School of Biomedical Sciences
Organizational Chart
December, 2000



|

TEXAS TECH UNIVERSITY HEALTH SCIENCES CENTER
School of Medicine
Organizational Chart
December, 2000

David R. Smith, M.D.
President

TTUHSC at El Paso
Manuel de la Rosa, M.D.
Regional Dean

TTUHSC at Ode

Anesthesiology
Cell Biology & Biochemistry
Dermatology
Emergency Medicine
Family & Community Medicine
Health Organization Mgt
Health Services Research
Internal Medicine
Microbiology & Immunology
Neurology
OB/GYN
Ophthalmology & Visual Sciences
Orthopaedic Surgery
Pathology
Pediatrics
Pharmacology
Physiology
Psychiatry
Radiology
Surgery

John T. Montford
Chancellor

David R. Smith, M.D.
President

Arthur A. Nelson, Ph.D.
Dean



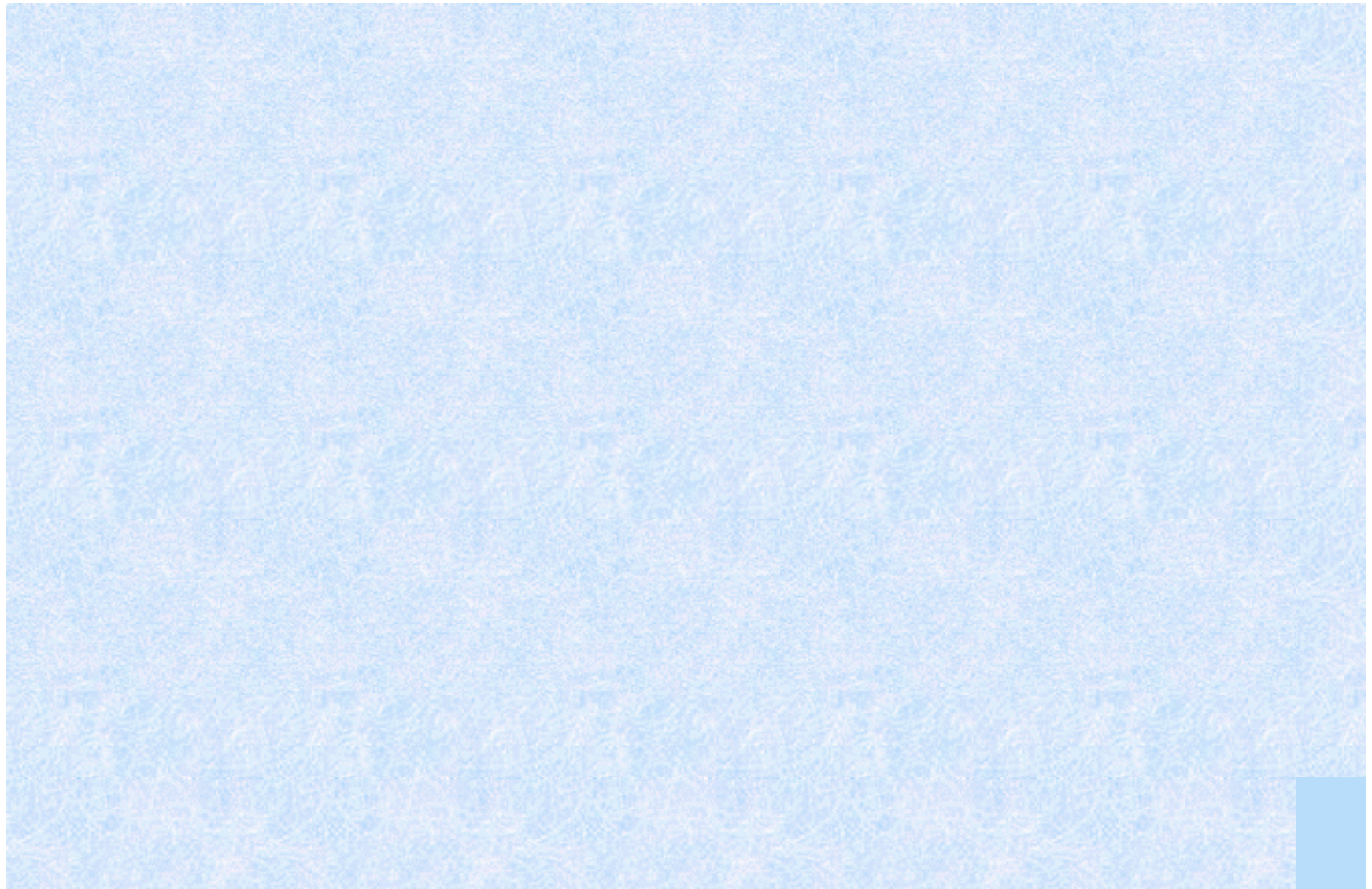
PROGRAMS

**TEXAS TECH UNIVERSITY HEALTH SCIENCES CENTER
ACADEMIC PROGRAMS BY CAMPUS**

Location	Medicine	Allied Health	Nursing	Graduate School of Biomedical Sciences	Pharmacy
AMARILLO	School of Medicine	Bioc 526, IB 362, ILwe (SologedictinT*(Tc181508 T(aw (Le78i0gPh02ursing) Tj 10ODESS			

STUDENTS

**TTUHSC Enrollment Trends
Fall 1991 - Fall 2000**





TEXAS TECH UNIVERSITY HEALTH SCIENCES CENTER

TEXAS TECH UNIVERSITY HEALTH SCIENCES CENTER

GRADUATE SCHOOL OF BIOMEDICAL SCIENCES

	1991		1992		1993		1994		1995		1996		1997		1998		1999		2000	
	M	F	M	F	M	F	M	F	M	F	M	F	M	F	M	F	M	F	M	F
African American	0	0	0	0	0	1	0	0	0	0	0	0	0	0	0	1	0	0	0	1
American Indian	0	0	0	0	0	0	0	0	0	0	0	0	0	0	0	0	0	0	0	0
Asian	0	0	0	0	0	0	1	0	1	0	1	3	1	1	3	3	2	6	6	5
Hispanic	1	1	1	1	1	1	1	0	2	0	1	0	2	0	3	0	2	1	1	1
Non-Resident Alien	8	2	12	5	8	7	3	6	3	6	5	9	3	7	7	6	11	8	10	9
Other	0	0	0	0	0	0	0	0	0	0	0	0	0	0	0	2	1	0	0	1
White	13	8	13	11	10	7	16	8	18	6	14	7	17	8	16	7	19	13	13	17
Total Enrollment	22	11	26	17	19	16	21	14	24	12	21	19	23	16	29	19	35	28	30	34

TEXAS TECH UNIVERSITY HEALTH SCIENCES CENTER

SCHOOL OF ALLIED HEALTH

	1991		1992		1993		1994		1995		1996		1997		1998		1999		2000	
	M	F	M	F	M	F	M	F	M	F	M	F	M	F	M	F	M	F	M	F
African American	0	0	0	2	0	5	0	2	0	3	1	4	1	5	2	5	3	9	1	11
American Indian	0	0	0	0	0	1	0	3	0	3	1	6	3	2	2	1	2	1	0	3
Asian	4	2	2	3	1	4	4	2	6	5	3	10	7	7	4	6	3	7	4	11
Hispanic	3	10	5	16	4	20	3	15	5	13	9	22	13	18	17	19	22	18	19	27
Non-Resident Alien	0	0	0	0	1	1	1	2	0	1	0	0	0	0	0	0	1	0	1	1
Other	1	0	1	0	1	0	0	0	0	0	0	0	0	0	0	0	0	0	0	0
White	44	87	52	96	59	216	77	243	96	276	125	312	131	298	125	273	106	272	107	273
Total Enrollment	52	99	60	117	66	247	85	267	107	301	139	354	155	330	150	304	137	307	132	326

TEXAS TECH UNIVERSITY HEALTH SCIENCES CENTER

SCHOOL OF MEDICINE

	1991		1992		1993		1994		1995		1996		1997		1998		1999		2000	
	M	F	M	F	M	F	M	F	M	F	M	F	M	F	M	F	M	F	M	F
African American	1	2	1	1	1	1	1	0	2	0	2	1	2	1	2	1	1	1	0	3
American Indian	3	1	2	0	1	0	0	0	0	0	2	0	2	0	2	0	4	0	2	0
Asian	29	13	26	13	23	7	24	8	24	8	28	11	37	12	47	16	56	25	58	33
Hispanic	24	9	23	11	30	14	34	20	42	21	42	19	38	18	31	13	30	11	27	13
Non-Resident Alien	0	0	0	0	0	0	0	0	0	0	0	0	0	0	0	0	0	0	0	0
Other	0	0	0	0	0	0	0	0	0	0	0	0	0	0	0	0	0	0	2	0
White	218	90	225	94	234	91	240	95	255	89	276	86	275	104	261	124	234	127	213	133
Total Enrollment	275	115	277	119	289	113	299	123	323	118	350	117	354	135	343	154	325	164	302	182

TEXAS TECH UNIVERSITY HEALTH SCIENCES CENTER

SCHOOL OF NURSING

	1991		1992		1993		1994		1995		1996		1997		1998		1999		2000	
	M	F	M	F	M	F	M	F	M	F	M	F	M	F	M	F	M	F	M	F
African American	1	14	3	20	4	22	4	22	3	24	2	23	1	15	1	11	0	10	1	8
American Indian	0	2	0	2	0	2	0	2	1	2	1	1	0	0	0	1	1	2	0	2
Asian	2	11	2	13	3	15	2	13	1	11	4	14	4	11	3	7	0	5	0	10
Hispanic	10	22	8	28	9	32	9	42	6	45	8	50	8	37	6	28	8	30	6	30
Non-Resident Alien	0	8	1	7	1	8	1	7	3	2	2	2	0	0	1	1	2	3	2	5
Other	0	0	0	0	0	0	0	0	0	0	0	0	0	0	0	0	0	0	0	0
White	34	268	46	317	48	344	39	326	28	315	33	311	31	304	37	266	34	301	28	295
Total Enrollment	47	325	60	387	65	423	55	412	42	399	50	401	44	367	48	314	45	351	37	350

TEXAS TECH UNIVERSITY HEALTH SCIENCES CENTER

SCHOOL OF PHARMACY

	2017-18		2018-19		2019-20		2020-21		2021-22	
	M	F	M	F	M	F	M	F	M	F
African American	2	0	2	0	2	1	2	1	3	2
American Indian	0	2	0	2	0	2	0	2	0	2
Asian	4	6	7	11	14	18	14	25	26	27
Hispanic	4	2	7	5	13	6	17	9	27	21
Non-Resident Alien	0	0	0	0	0	0	4	0	1	2
Other	0	0	0	0	0	0	1	0	1	1
White	16	27	38	52	50	80	77	108	89	124
Total Enrollment	26	37	47	70	77	108	108	140	124	157

TEXAS TECH UNIVERSITY HEALTH SCIENCES CENTER
ADMISSIONS STATISTICS
Fall Semester

<i>Applications Received</i>							
	SOM	GSBS	SON	SOAH	SOP	TOTAL	
1994	1,607	53	347	617	N/A	2,624	
1995	1,596	72	279	659	N/A	2,606	
1996	1,697	45	319	580	133	2,774	
1997	1,558	48	291	500	220	2,617	
1998	1,449	26	184	429	229	2,317	
1999	1,484	65	180	438	198	2,365	
2000	2,126	111	367	412	307	3,323	
<i>Offers Accepted and Admitted</i>							
	SOM	GSBS	SON	SOAH	SOP	TOTAL	
1994	+6 AIMS*	114	10	121	214	N/A	465
1995	+4 AIMS*	116	12	97	203	N/A	432
1996	+4 AIMS*	116	10	127	205	64	526
1997	Program Discontinued	118	11	91	179	66	465
1998		120	10	84	172	66	452
1999		123	13	80	177	55	448
2000		124	24	187	202	79	616

*AIMS: Decelerated program for disadvantaged students who were selected from the rejected application pool of the previous year.

**TEXAS TECH UNIVERSITY HEALTH SCIENCES CENTER
STATE BOARD PASS RATES FOR FIRST TIME CANDIDATES**

CLINICAL LABORATORY SCIENCE

YEAR	PASS RATE	NATIONAL MEAN
1989	100%	82%
1990	78%	78%
1991	100%	81%
1992	94%	86%
1993	88%	82%
1994	79%	80%
1995	83%	82%
1996	90%	80%
1997	90%	80%
1998	92%	78%
1999	84%	78%
2000	95%	77%

***TEXAS TECH UNIVERSITY HEALTH SCIENCES CENTER
STATE BOARD PASS RATES FOR FIRST TIME CANDIDATES***

OCCUPATIONAL THERAPY

<i>YEAR</i>	<i>PASS RATE</i>
1989	89%
1990	100%
1991	100%
1992	100%
1993	100%
1994	100%
1995	100%
1996	98%
1997	95%
1998	96%
1999	95%
2000	93%

**TEXAS TECH UNIVERSITY HEALTH SCIENCES CENTER
STATE BOARD PASS RATES FOR FIRST TIME CANDIDATES**

PHYSICAL THERAPY*

YEAR	PASS RATE
1990	100%
1991	100%
1992	100%
1993	100%
1994	100%
1995	100%
1996	N/A (Program changed from Bachelor's to Master's Program - no graduating class.)
1997	82%
1998	85%
1999	85%
2000	98%

* Students sitting for the professional examination in Physical Therapy are not required to report their scores to the department. Therefore, most do not, and we only have data for those who choose on the score report to have their "home department" receive a copy. Since they take the test after they have graduated, we have no mechanism to enforce reporting.

**TEXAS TECH UNIVERSITY HEALTH SCIENCES CENTER
STATE BOARD PASS RATES FOR FIRST TIME CANDIDATES
COMMUNICATION DISORDERS***

SPEECH-LANGUAGE PATHOLOGY

<i>YEAR</i>	<i>PASS RATE</i>
1989	100%
1990	100%
1991	100%
1992	90%
1993	90%
1994	80%
1995	100%
1996	100%
1997	100%
1998	100%
1999	100%
2000	100%

*Students sitting for the professional examination in Speech Pathology and Audiology are not required to report their scores to the department. Therefore, most do not and we only have data for those who choose on the score report to have their “home department” receive a copy. Since they take the test after they have graduated, we have no mechanism to enforce reporting.

**TEXAS TECH UNIVERSITY HEALTH SCIENCES CENTER
STATE BOARD PASS RATES FOR FIRST TIME CANDIDATES
COMMUNICATION DISORDERS***

Continued

AUDIOLOGY

YEAR	PASS RATE
1989	100%
1990	N/A
1991	100%
1992	100%
1993	75%
1994	100%
1995	N/A
1996	100%
1997	100%
1998	100%
1999	100%
2000	100%

*Students sitting for the professional examination in Speech Pathology and Audiology are not required to report their scores to the department. Therefore, most do not and we only have data for those who choose on the score report to have their “home department” receive a copy. Since they take the test after they have graduated, we have no mechanism to enforce reporting.

***TEXAS TECH UNIVERSITY HEALTH SCIENCES CENTER
PASS RATES FOR STATE & NATIONAL LICENSING
EXAMINATION***

SCHOOL OF PHARMACY

<i>YEAR</i>	<i>PASS RATE</i>
2000	100%

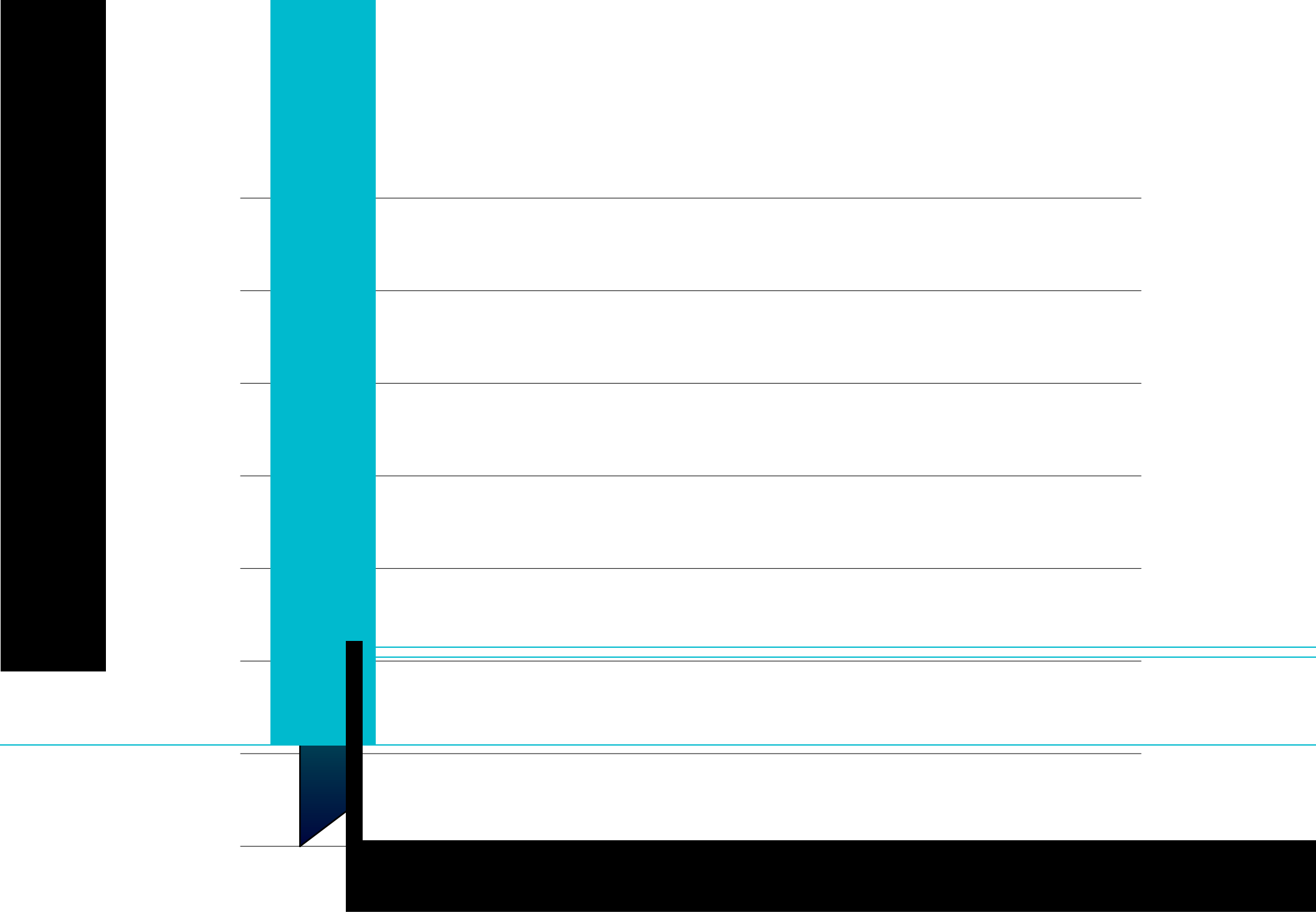
**TEXAS TECH UNIVERSITY HEALTH SCIENCES CENTER
USMLE PASS RATES FOR FIRST TIME TEST TAKERS**

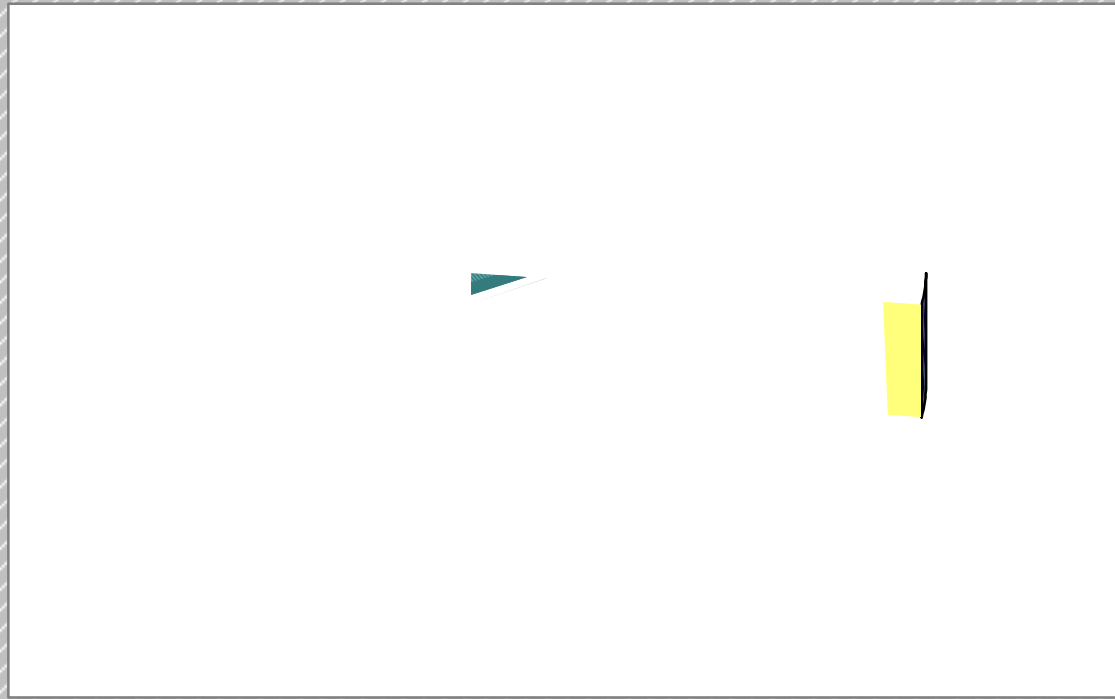
SCHOOL OF MEDICINE

United States Medical Licensing Examination (USMLE)

CLASS YEAR	STEP I	STEP II	BOTH STEPS I & II
	Sat/Passed (%)	Sat/Passed (%)	Sat/Passed (%)
Class of 1995	96/80 (83%)	94/88 (94%)	92/79 (86%)
Class of 1996	91/86 (95%)	92/86 (95%)	91/83 (91%)
Class of 1997	99/95 (96%)	99/93 (94%)	99/91 (92%)
Class of 1998	112/108 (96%)	109/107 (98%)	109/104 (95%)
Class of 1999	126/119 (94%)	126/121 (96%)	126/119 (94%)
Class of 2000	121/117 (96%)	119/111 (94%)	119/110 (92%)

This table describes the USMLE performance of each graduating class of TTUHSC medical students. Step 1 is taken after the completion of Year 2 and must be taken before the beginning of Year 3. Step 2 must be taken during Year 4 prior to graduation.





RESIDENTS

**TEXAS TECH UNIVERSITY HEALTH SCIENCES CENTER
SCHOOL OF MEDICINE
RESIDENT DISTRIBUTION
SEPTEMBER 1, 2000**

DESCRIPTION	AMARILLO	EL PASO	LUBBOCK	ODESSA	TOTAL
Anesthesiology	0	11	29	0	40
Pain Management	0	0	5	0	5
Dermatology	0	0	7	0	7
Dermatopathology	0	0	1	0	1
Emergency Medicine	0	25	0	0	25
Family Practice	17	26	27	15	85
Internal Medicine	33	33	25	25	116
Cardiology	0	0	6	0	6
Gastroenterology	0	0	2	0	2
Nephrology	0	0	2	0	2
Obstetrics/Gynecology	13	13	12	8	46
Ophthalmology	0	0	8	0	8
Orthopaedic Surgery	0	17	11	0	28
Pathology	0	0	7	0	7
Pediatrics	13	29	19	0	61
Psychiatry	0	14	14	0	28
Surgery	0	12	19	0	31
Transitional	0	5	0	0	5
TOTALS	76	185	194	48	503

**TEXAS TECH UNIVERSITY HEALTH SCIENCES CENTER
SCHOOL OF MEDICINE
RESIDENT DISTRIBUTION
SEPTEMBER 1, 1999**

DESCRIPTION	AMARILLO	EL PASO	LUBBOCK	ODESSA	TOTAL
Anesthesiology	0	9	28	0	37
Pain Management	0	0	4	0	4
Dermatology	0	0	6	0	6
Emergency Medicine	0	23	0	0	23
Family Practice	18	24	27	16	85
Internal Medicine	30	30	23	24	107
Cardiology	0	0	6	0	6
Gastroenterology	0	0	3	0	3
Nephrology	0	0	2	0	2
Obstetrics/Gynecology	14	15	12	8	49
Ophthalmology	0	0	9	0	9
Orthopaedic Surgery	0	17	11	0	28
Pathology	0	0	9	0	9
Pediatrics	13	28	19	0	60
Psychiatry	0	14	12	0	26
Surgery	0	12	18	0	30
Transitional	0	5	0	0	5
TOTALS	75	177	189	48	489

**TEXAS TECH UNIVERSITY HEALTH SCIENCES CENTER
SCHOOL OF MEDICINE
RESIDENT DISTRIBUTION
SEPTEMBER 1, 1998**

DESCRIPTION	AMARILLO	EL PASO	LUBBOCK	ODESSA	TOTAL
Anesthesiology	0	6	18	0	24
Pain Management	0	0	4	0	4
Dermatology	0	0	6	0	6
Emergency Medicine	0	23	0	0	23
Family Practice	18	25	27	21	91
Internal Medicine	29	28	27	21	105
Cardiology	0	0	6	0	6
Gastroenterology	0	0	3	0	3
Nephrology	0	0	2	0	2
Medicine/Pediatrics	0	0	0	7	7
Obstetrics/Gynecology	14	15	11	8	48
Ophthalmology	0	0			

Td (0dO 0 TD (0) Tj 90 C TD (7) Tj -666 -2103TD 0.4828 03TD

**TEXAS TECH UNIVERSITY HEALTH SCIENCES CENTER
SCHOOL OF MEDICINE
RESIDENT DISTRIBUTION
SEPTEMBER 1, 1997**

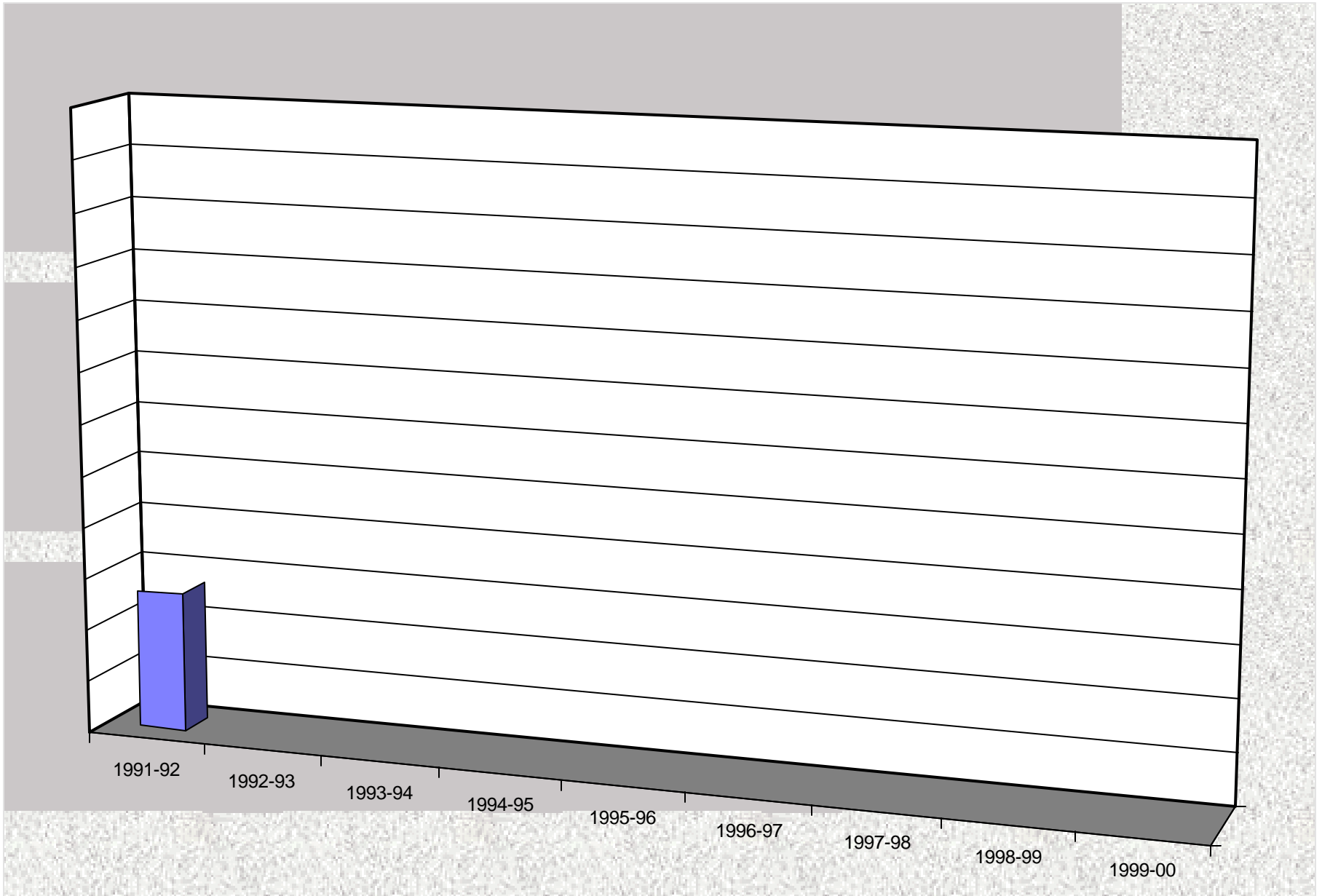
DESCRIPTION	AMARILLO	EL PASO	LUBBOCK	ODESSA	TOTAL
Anesthesiology	0	10	15	0	25
Pain Management	0	0	4	0	4
Dermatology	0	0	6	0	6
Emergency Medicine	0	22	0	0	22
Family Practice	19	24	27	19	89
Internal Medicine	28	30	25	12	95
Cardiology	0	0	6	0	6
Gastroenterology	0	0	3	0	3
Nephrology	0	0	2	0	2
Medicine/Pediatrics	0	0	0	13	13
Neurology	0	0	3	0	3
Obstetrics/Gynecology	17	16	12	8	53
Ophthalmology	0	0	8	0	8
Orthopaedic Surgery	0	20	10	0	30
Pathology	0	2	6	0	8
Pediatrics	14	25	19	0	58
Psychiatry	0	12	11	0	23
Surgery	0	12	18	0	30
Transitional	0	3	0	0	3
TOTALS	78	176	175	52	481

**TEXAS TECH UNIVERSITY HEALTH SCIENCES CENTER
SCHOOL OF MEDICINE
RESIDENT DISTRIBUTION
SEPTEMBER 1, 1996**

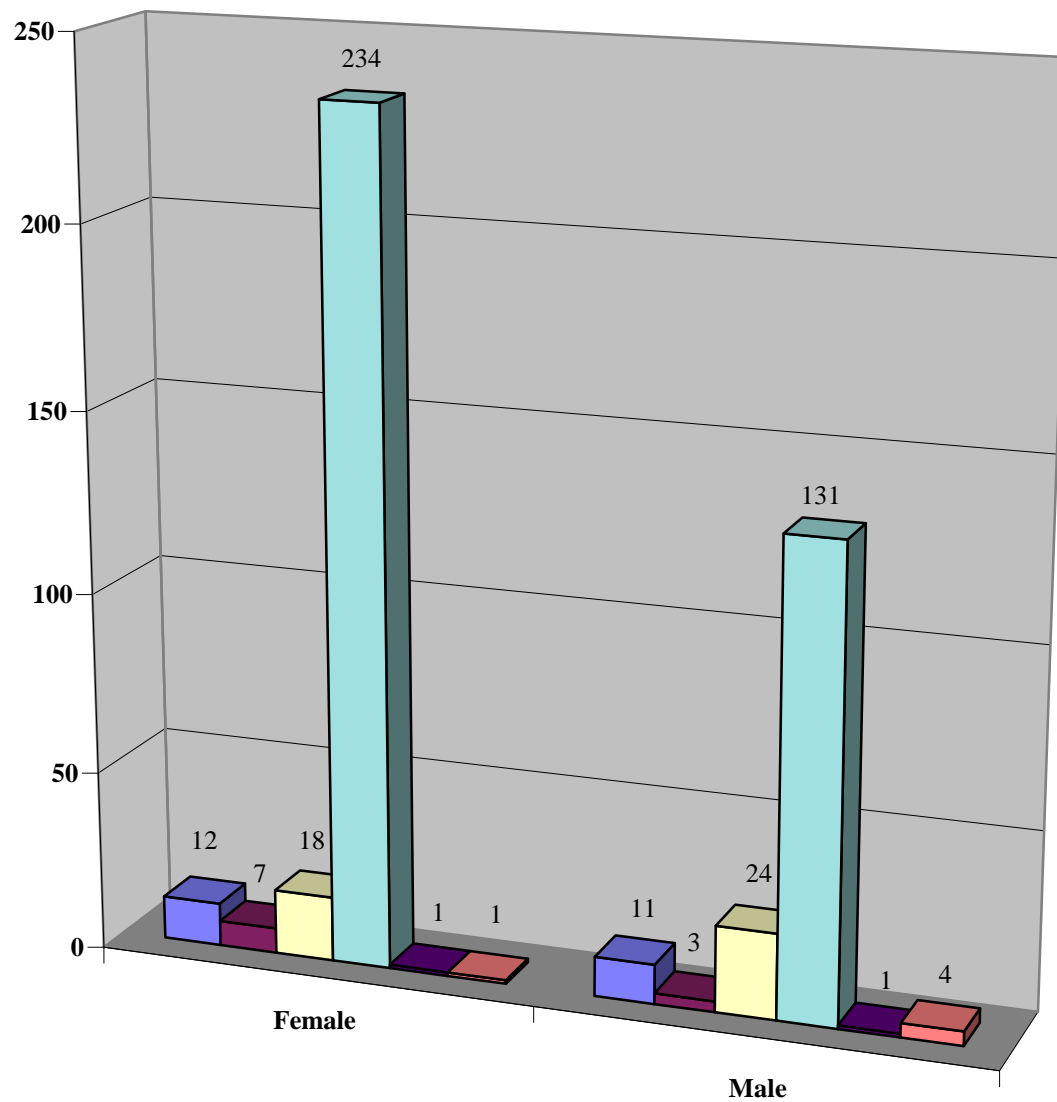
DESCRIPTION	AMARILLO	EL PASO	LUBBOCK	ODESSA	TOTAL
Anesthesiology	0	12	15	0	27
Pain Management	0	0	5	0	5
Dermatology	0	0	6	0	6
Emergency Medicine	0	25	0	0	25
Family Practice	21	28	25	17	91
Internal Medicine	33	30	27	0	90
Cardiology	0	0	5	0	5
Gastroenterology	0	0	3	0	3
Nephrology	0	0	1	0	1
Medicine/Pediatrics	0	0	0	18	18
Neurology	0	0	4	0	4
Obstetrics/Gynecology	15	18	13	8	54
Ophthalmology	0	0	10	0	10
Orthopaedic Surgery	0	21	11	0	32
Pathology	0	6	4	0	10
Pediatrics	13	32	18	0	63

DEGREES
AWARDED

**TTUHSC Graduates by Academic Year
1991 - 2000**



TTUHSC Graduates by Sex/Ethnicity 1999 - 2000



■ Asian ■ African American ■ Hispanic ■ White ■ Foreign ■ American Indian

PERSONNEL

TEXAS TECH UNIVERSITY HEALTH SCIENCES CENTER

FULL-TIME EMPLOYEES

NON-INSTRUCTIONAL FULL-TIME EMPLOYEES:	Fall 1996	Percent	Fall 1997	Percent	Fall 1998	Percent	Fall 1999	Percent	Fall 2000	Percent
Total Employees	2,431	100%	2,516	100%	2,678	100%	2,777	100%	2,827	100%
Male	567	23%	545	22%	606	23%	642	23%	652	23%
Female	1,864	77%	1,971	78%	2,072	77%	2,135	77%	2,175	77%
White	1,551	64%	1,561	62%	1,638	61%	1,713	62%	1,737	61%
Black	102	4%	106	4%	114	4%	110	4%	101	4%
Hispanic	724	30%	788	31%	862	32%	886	32%	916	32%
Other	54	2%	61	3%	64	3%	68	2%	73	3%
INSTRUCTIONAL FULL-TIME EMPLOYEES:	Fall 1996	Percent	Fall 1997	Percent	Fall 1998	Percent	Fall 1999	Percent	Fall 2000	Percent
Total Employees	520	100%	534	100%	516	100%	562	100%	564	100%

**TEXAS TECH UNIVERSITY HEALTH SCIENCES CENTER
ALL CENTERS
FULL-TIME FACULTY
FALL, 2000**

	TOTAL	MALE	FEMALE	WHITE	BLACK	HISPANIC	ASIAN/PI	AI/AN
Full-Time Faculty	564	373	191	428	14	55	67	0
School of Allied Health	51	27	24	45	0	1	5	0
School of Medicine	422	317	105	307	10	50	55	0
School of Nursing	39	1	38	34	1	3	1	0
School of Pharmacy	52	28	24	42	3	1	6	0

Note: Full-time faculty count excludes 17 academic administrators. They are counted as a group (02) Academic Administration staff in the President's Division in the Affirmative Action Plan.

**TEXAS TECH UNIVERSITY HEALTH SCIENCES CENTER
FULL-TIME FACULTY COUNT BY CAMPUS AND SCHOOL
FALL, 2000**

AMARILLO:	TOTAL	MALE	FEMALE	WHITE	BLACK	HISPANIC	ASIAN/PI	AI/AN
School of Allied Health	6	2	4	6	0	0	0	0
School of Medicine	49	36	13	34	3	2	10	0
School of Nursing	N/A	N/A	N/A	N/A	N/A	N/A	N/A	N/A
School of Pharmacy *	41	24	17	32	3	1	5	0
EL PASO:	TOTAL	MALE	FEMALE	WHITE	BLACK	HISPANIC	ASIAN/PI	AI/AN
School of Allied Health	N/A	N/A	N/A	N/A	N/A	N/A	N/A	N/A
School of Medicine	110	78	32	62	1	29	18	0
School of Nursing	N/A	N/A	N/A	N/A	N/A	N/A	N/A	N/A
School of Pharmacy	1	0	1	0	0	0	1	0
LUBBOCK:	TOTAL	MALE	FEMALE	WHITE	BLACK	HISPANIC	ASIAN/PI	AI/AN
School of Allied Health	40	23	17	35	0	0	5	0
School of Medicine	234	180	54	192	4	16	22	0
School of Nursing	36	1	35	32	1	2	1	0
School of Pharmacy	10	4	6	10	0	0	0	0
ODESSA/MIDLAND:	TOTAL	MALE	FEMALE	WHITE	BLACK	HISPANIC	ASIAN/PI	AI/AN
School of Allied Health	5	2	3	4	0	1	0	0
School of Medicine	29	23	6	19	2	3	5	0
School of Nursing	3	0	3	2	0	1	0	0
School of Pharmacy	N/A	N/A	N/A	N/A	N/A	N/A	N/A	N/A

* Includes Dallas campus

**TEXAS TECH UNIVERSITY HEALTH SCIENCES CENTER
 FULL-TIME NON-INSTRUCTIONAL STAFF BY CAMPUS
 FALL, 2000**

	TOTAL	MALE	FEMALE	WHITE	BLACK	HISPANIC	ASIAN/PI	AI/AN
AMARILLO CAMPUS	654	126	528	549	28	65	7	5
EL PASO CAMPUS	517	84	433	45	4	460	2	6
LUBBOCK CAMPUS	1,465	420	1,045	1,048	63	306	36	12
ODESSA CAMPUS	191	22	169	95	6	85	1	4
TOTAL	2,827	652	2,175	1,737	101	916	46	27

NOTES:

LIBRARY

[Redacted]

[Redacted]								
	[Redacted]		[Redacted]		[Redacted]		[Redacted]	
[Redacted]								
	[Redacted]		[Redacted]		[Redacted]		[Redacted]	

[Redacted]

[Redacted]

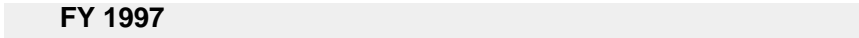
FINANCIAL

**Texas Tech University Health Sciences Center
Current Funds Revenues
Fiscal Years 1996/97 - 1999/00**

	FY 1997	FY 1998	FY 1999	FY 2000
Tuition/Fees	6,907,233	7,720,272	8,319,533	9,110,940
State Appropriations	79,996,449	89,195,262	90,074,106	100,790,860
Gifts, Grants, Contracts				
Federal	3,820,531	4,164,519	4,466,858	5,247,371
State	67,063,568	65,866,831	69,668,388	78,576,019
Local	32,442,958	38,725,047	40,184,627	43,079,237
Private	13,316,790	20,945,228	23,883,636	34,022,199
Endowment Income	670,894	762,384	986,990	2,885,046
Sales/Services from Educational Activities	2,259,166	2,334,293	2,221,751	2,438,616
Sales/Services from Auxiliary Enterprises	98,627	102,858	161,743	99,642
Professional Fees	73,269,490	78,689,495	77,751,697	82,878,265
Other Revenues	13,569,917	11,258,389	12,542,652	14,831,126
TOTAL REVENUES	293,415,623	319,764,578	330,261,981	373,959,321

**Texas Tech University Health Sciences Center
Current Funds Expenditures By Function
Fiscal Years 1996/97 - 1999/00**

FY 1997





SPACE

LEASE OF SPACE REPORT AS OF NOVEMBER 1, 2000

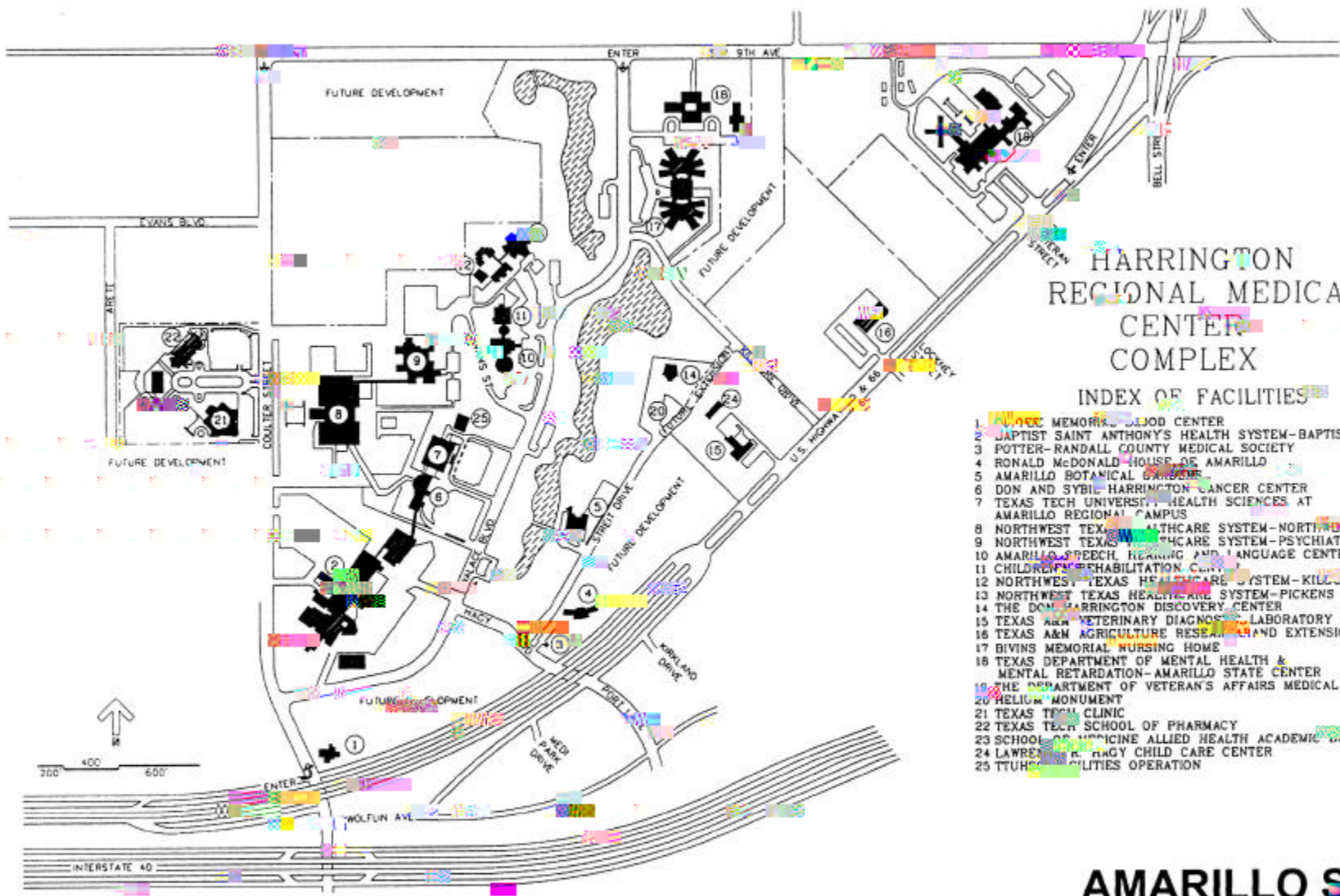
LOCATION	DEPARTMENT	FUNCTION	SQUARE FOOTAGE	
Amarillo	Managed Health Care	Office	4,182	
Amarillo	Allied Health	Office	3,172	
Amarillo	Allied Health	Office	3,799	
Amarillo	General Counsel	Storage	100	
Amarillo	Pharmacy	Office	2,408	
Amarillo	Computer Services	Storage	90	
Amarillo	Allied Health	Storage	300	
Amarillo	Office of the Reg. Dean	Storage	300	
Amarillo	Family Medicine	Storage	300	
Amarillo	Maintenance & Ops.	Storage	120	
Amarillo	Internal Medicine	Storage	240	
Amarillo	Family Medicine	Storage	300	
Amarillo	Clinic Administration	Storage	300	
Amarillo	Surgery	Storage	150	
Amarillo	Research	Storage	240	
Amarillo	MPIP	Storage	340	
Amarillo	OB/GYN	Storage	320	
Amarillo	Pediatrics	Clinic	2,455	
Amarillo	OB/GYN	Clinic	7,028	
		Amarillo Sub-Total	26,144	
El Paso	Psychiatry	Clinic	11,446	
El Paso	Family Medicine	Office & Clinic	3,300	
El Paso	OB/GYN	Clinic	8,698	
El Paso	OB/GYN	Clinic	4,440	
El Paso	Pediatrics	Clinic	2,108	
El Paso	Pediatrics	Clinic	1,212	8,698
		El Paso	1,212	

LEASE OF SPACE REPORT AS OF NOVEMBER 1, 2000

LOCATION	DEPARTMENT	FUNCTION	SQUARE FOOTAGE
Lubbock	Clinic Administration	Storage	80
Lubbock	MPIP	Storage	2,160
Lubbock	Administration	Storage	300
Lubbock	School of Pharmacy	Storage	50
Lubbock	Neuro/Psyc	Storage	25
Lubbock	Managed Health Care	Storage	80
Lubbock	Nursing	Clinic	7,200
Lubbock	Maintenance Ops sw	Storage	3,600
Lubbock	Radiology	Storage	250
Lubbock	Neuropsychiatry	Storage	500
Lubbock	Internal Medicine	Storage	250
Lubbock	Family Medicine	Storage	250
Lubbock	Strategic Planning	Storage	250
Lubbock	Orthopaedic Surgery	Storage	250
Lubbock	Medical Records	Storage	250
Lubbock	Pediatrics	Clinic	1,400
Lubbock	Managed Health Care	Office	5,629
Lubbock	Ophthalmology	Storage	240
Lubbock	Ophthalmology	Clinic	6,097
Lubbock	Various	Clinic	83,110
Lubbock	Ophthalmology	Clinic	3,100
Lubbock	Family Medicine	Clinic	2,890
Lubbock	Surgery	Clinic	3,025
Lubbock	Pediatrics	Clinic	2,388
Lubbock	Surgery	Clinic	1,877
Lubbock	Urology	Clinic	4,446
Lubbock	Internal Medicine	Clinic	3,376
Lubbock	Pediatrics/Card	Clinic	1,637
Lubbock	Otolaryn	Clinic	3,875
Lubbock	Internal Medicine	Clinic	2,387
Lubbock	Orthopaedic Surgery	Clinic	6,432
Lubbock	Healthnet	Storage	5,000
		Lubbock Sub-Total	152,404

LEASE OF SPACE REPORT AS OF NOVEMBER 1, 2000

LOCATION	DEPARTMENT	FUNCTION	SQUARE FOOTAGE
Midland	Allied Health	Office	880
Midland	Heart Institute	Clinic	



HARRINGTON REGIONAL MEDICAL CENTER COMPLEX

INDEX OF FACILITIES

- 1 JAMES MEMORIAL MUSEUM CENTER
- 2 BAPTIST SAINT ANTHONY'S HEALTH SYSTEM-BAPTIST CAMPUS
- 3 POTTER-RANDALL COUNTY MEDICAL SOCIETY
- 4 RONALD McDONALD HOUSE OF AMARILLO
- 5 AMARILLO BOTANICAL GARDENS
- 6 DON AND SYBIL HARRINGTON CANCER CENTER
- 7 TEXAS TECH UNIVERSITY - HEALTH SCIENCES AT AMARILLO REGIONAL CAMPUS
- 8 NORTHWEST TEXAS HEALTHCARE SYSTEM-NORTHWEST TEXAS HOSPITAL
- 9 NORTHWEST TEXAS HEALTHCARE SYSTEM-PSYCHIATRIC PAVILION
- 10 AMARILLO SPEECH HEARING AND LANGUAGE CENTER
- 11 CHILDREN'S REHABILITATION CENTER
- 12 NORTHWEST TEXAS HEALTHCARE SYSTEM-KILGORE UNIT
- 13 NORTHWEST TEXAS HEALTHCARE SYSTEM-PICKENS UNIT
- 14 THE DON HARRINGTON DISCOVERY CENTER
- 15 TEXAS A&M VETERINARY DIAGNOSTIC LABORATORY
- 16 TEXAS A&M AGRICULTURE RESEARCH AND EXTENSION CENTER
- 17 BIVINS MEMORIAL NURSING HOME
- 18 TEXAS DEPARTMENT OF MENTAL HEALTH & MENTAL RETARDATION-AMARILLO STATE CENTER
- 19 THE DEPARTMENT OF VETERAN'S AFFAIRS MEDICAL CENTER
- 20 HELIUM MONUMENT
- 21 TEXAS TECH CLINIC
- 22 TEXAS TECH SCHOOL OF PHARMACY
- 23 SCHOOL OF NURSING ALLIED HEALTH ACADEMIC BUILDING
- 24 LAWRENCE R. HAGY CHILD CARE CENTER
- 25 TTUHS FACILITIES OPERATION

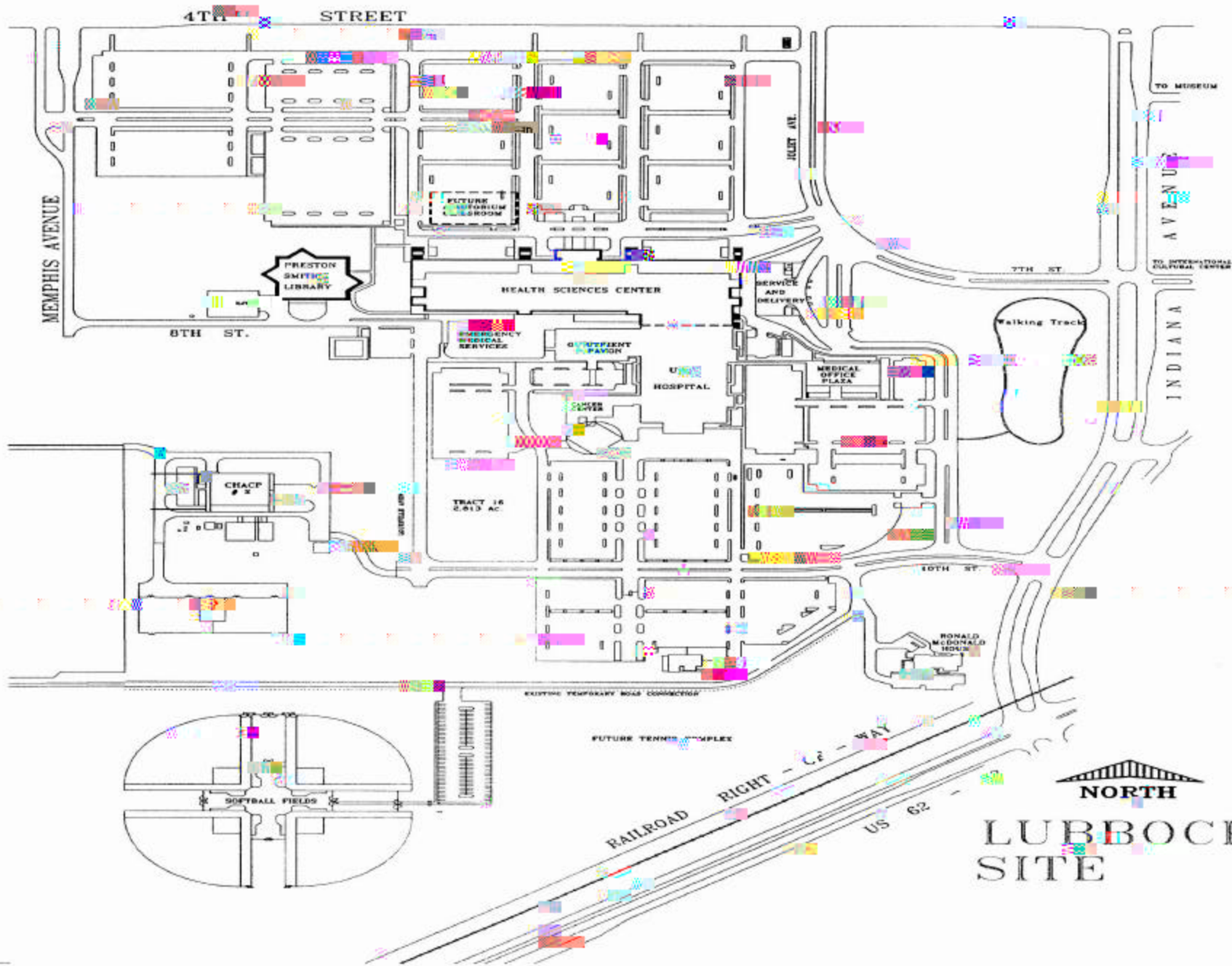
AMARILLO SITE

EL PASO MEDICAL CENTER



- ① TTUHSC AT EL PASO
- ② R.E. THOMASON ANNEX
- ③ BUILDING #1
- ④ BUILDING #2
- ⑤ FUTURE EXPANSION (20,000 G.S.F.)
- ⑥ MEDICAL RECORDS & PHARMACY
- ⑦ R.E. THOMASON HOSPITAL
- ⑧ NEW ADDITION - R.E. THOMASON
- ⑨ TEXAS TECH MEDICAL CENTER
- ⑩ AREA UNDER CONSTRUCTION
- ⑪ CLINIC PARKING
- ⑫ CLINIC EMPLOYEE PARKING
- ⑬ R.E. THOMASON HOSPITAL



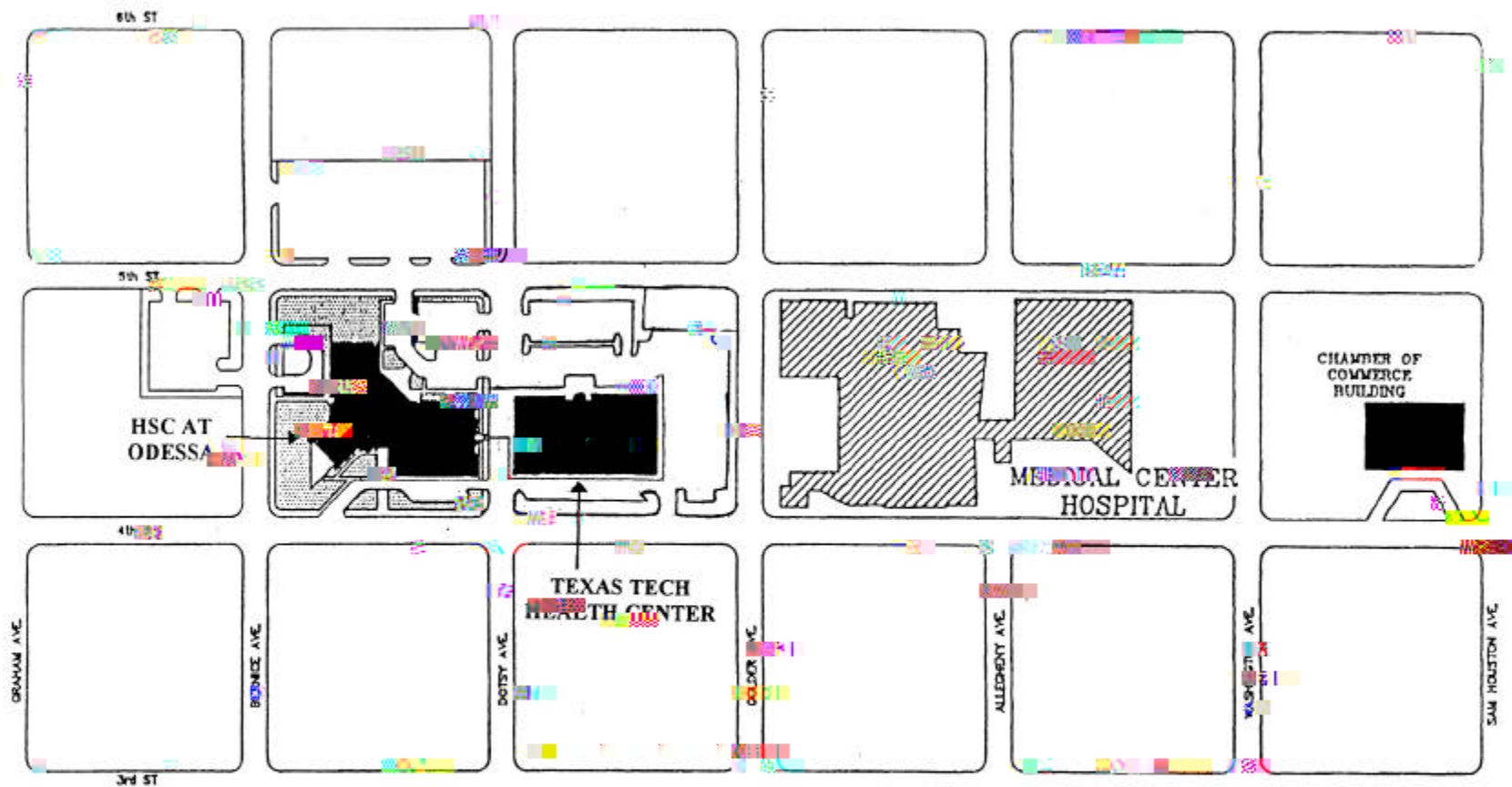


NORTH
**LUBBOCK
 SITE**



TEXAS TECH MEDICAL CENTER SOUTHWEST

NO SCALE OCTOBER, 2000



ODESSA SITE

ALUMNI

**TEXAS TECH UNIVERSITY HEALTH SCIENCES CENTER
ALUMNI BY COUNTY
SCHOOL OF ALLIED HEALTH**

COUNTIES

TTUHSC Alumni By County
School of Allied Health
Page 2

Loving	Panola	Stephens - 1	Wilson
Lubbock - 241	Parker - 5	Sterling - 2	Winkler - 2
Lynn	Parmer - 5	Stonewall - 1	Wise - 1
Madison	Pecos - 1	Sutton	Wood
Marion	Polk - 1	Swisher - 1	Yoakum - 2
Martin	Potter - 52	Tarrant - 51	Young - 1
Mason	Presidio	Taylor - 23	Zapata
Matagorda	Rains	Terrell	Zavala
Maverick - 1	Randall - 7	Terry - 4	
McCulloch	Reagan	Throckmorton - 1	
McLennan - 2	Real	Titus - 1	
McMullen	Red River	Tom Green - 12	
Medina	Reeves	Travis - 18	
Menard	Refugio	Trinity	
Midland - 33	Roberts	Tyler	
Milam	Robertson	Upshur	
Mills	Rockwall - 1	Upton	
Mitchell	Runnels - 1	Uvalde	
Montague	Rusk	Val Verde - 2	
Montgomery	Sabine - 1	Van Zandt - 2	
Moore	San Augustine	Victoria - 1	
Morris	San Jacinto	Walker - 1	
Motley	San Patricio	Waller	
Nacogdoches - 1	San Saba	Ward	
Navarro - 1	Schleicher	Washington - 2	
Newton	Scurry - 4	Webb - 4	
Nolan - 1	Shackelford	Wharton	
Nueces - 7	Shelby	Wheeler	
Ochiltree - 2	Sherman	Wichita - 7	
Oldham - 1	Smith - 8	Wilbarger - 3	
Orange	Somervell	Willacy	
Palo Pinto - 1	Starr	Williamson - 11	

TTUHSC Alumni By County
School of Medicine & Graduate School
of Biomedical Sciences
Page 2

Lubbock - 204

Lynn - 1

Madison

Marion

Martin

Mason

Matagorda - 1

Maverick

McCulloch - 2

TEXAS TECH UNIVERSITY HEALTH SCIENCES CENTER

TTUHSC Alumni By County
School of Nursing

**TEXAS TECH UNIVERSITY HEALTH SCIENCES CENTER
ALUMNI BY COUNTY
SCHOOL OF PHARMACY**

COUNTIES

Anderson
Andrews
Angelina
Aransas
Archer
Armstrong
Atascosa
Austin
Bailey
Bandera
Bastrop
Baylor
Bee
Bell
Bexar - 3
Blanco
Borden
Bosque
Bowie
Brazoria
Brazos
Brewster
Briscoe
Brooks
Brown
Burlson
Burnet
Caldwell
Calhoun
Callahan

Cameron
Camp - 1
Carson
Cass
Castro
Chambers
Cherokee
Childress
Clay
Cochran
Coke
Coleman
Collin - 3
Collingsworth
Colorado
Comal
Comanche
Concho
Cooke
Coryell
Cottle
Crane
Crockett
Crosby
Culberson
Dallam
Dallas - 3
Dawson
Deaf Smith
Delta

Denton - 1
DeWitt
Dickens
Dimmit
Donley
Duval
Eastland
Ector
Edwards
Ellis
El Paso - 1
Erath
Falls
Fannin
Fayette
Fisher
Tr3EGx64CColeman

ri Tj T* -0.1845 0431 Tc 0.3319 Tw (Gainej 0 -13.5 TDcke.1986 Tc Tw (BandGalves Tw 0 -13.5 T

MEDICAL
PRACTICE
INCOME PLAN

**TEXAS TECH UNIVERSITY HEALTH SCIENCES CENTER
SCHOOL OF MEDICINE**

FACULTY PHYSICIAN PROVIDER PLANS	1990	1991	1992	1993	1994	1995	1996	1997	1998	1999	2000	Total
1. PROVIDER PLAN INCOME: 1990-2000												
A. GROSS AMOUNT												
1. Gross Charges												
Lubbock	\$37,250,608	\$41,076,618	\$49,615,147	\$58,884,405	\$65,158,463	\$66,974,073	\$69,970,879	\$68,147,380	\$71,353,642	\$75,092,413	\$81,746,294	\$685,269,922
Amarillo	9,534,544	10,186,221	14,707,148	15,075,499	15,730,285	17,655,615	19,677,426	19,565,451	18,928,988	18,975,774	22,268,767	182,305,718
El Paso	31,570,904	33,405,294	44,407,494	50,063,096	57,817,273	66,351,314	64,156,916	58,272,252	59,452,051	62,502,138	74,178,421	602,177,153
Odessa	4,641,658	5,091,896	5,869,109	5,273,951	6,807,099	7,556,563	7,908,524	8,367,247	9,181,321	9,391,212	10,176,776	80,265,356
Total	82,997,714	89,760,029	114,598,898	129,296,951	145,513,120	158,537,565	161,713,745	154,352,330	158,916,002	165,961,537	188,370,258	1,550,018,149
2. Net Collections												
Lubbock	20,744,807	22,556,055	24,035,656	27,997,492	30,952,368	30,808,725	30,481,362	28,789,495	31,179,260	30,984,450	34,089,390	312,619,060
Amarillo	6,412,498	6,598,631	7,322,656	8,627,972	9,001,069	9,598,108	10,864,027	11,057,614	9,773,522	9,429,714	10,216,273	98,902,084
El Paso	12,050,586	14,030,281	16,882,488	18,438,415	18,509,154	20,326,418	21,168,961	19,812,811	20,919,316	21,510,122	24,733,218	208,381,770
Odessa	2,569,961	2,824,291	3,306,507	2,964,296	3,610,138	3,859,504	3,712,268	4,246,604	4,250,689	4,296,203	4,590,822	40,231,283
Total	41,777,852	46,009,258	51,547,307	58,028,175	62,072,729	64,592,755	66,226,618	63,906,524	66,122,787	66,220,489	73,629,703	660,134,197
B. ADJUSTMENTS												
1. Total Amount												
Lubbock								32,559,900	36,462,038	35,202,069	40,899,196	145,123,203
Amarillo								8,560,398	8,427,939	8,066,199	9,569,663	34,624,199
El Paso								28,940,408	29,411,177	29,878,499	35,915,773	124,145,857
Odessa								3,882,264	4,088,690	3,886,223	4,512,236	16,369,413
Total								73,942,970	78,389,844	77,032,990	90,896,868	320,262,672
2. Non-Indigent Adjustments												
Lubbock								15,626,121	18,756,646	21,335,363	24,821,728	80,539,858
Amarillo								2,604,776	2,115,952	2,215,606	2,955,537	9,891,871
El Paso								4,817,567	5,647,579	6,468,593	8,421,899	25,355,638
Odessa								497,196	793,613	1,074,929	1,513,507	3,879,245
Total								23,545,660	27,313,790	31,094,491	37,712,671	119,666,612
C. BAD DEBT AMOUNT												
Lubbock	6,139,675	3,377,015	3,496,948	5,992,618	3,196,978	5,373,814	12,005,992	12,513,574	7,621,187	6,748,517	7,836,577	74,302,895
Amarillo	844,417	610,494	281,995	572,639	601,233	457,002	2,265,923	2,127,774	755,626	1,423,710	1,414,994	11,355,807
El Paso	6,974,041	10,472,793	6,069,528	11,433,742	7,929,382	19,127,634	17,639,466	16,696,352	10,929,500	11,122,735	12,532,844	130,928,017
Odessa	926,915	757,042	609,277	320,197	435,302	468,392	1,409,508	1,422,924	871,039	1,437,042	1,298,179	9,955,817
Total	14,885,048	15,217,344	10,457,748	18,319,196	12,162,895	25,426,842	33,320,889	32,760,624	20,177,352	20,732,004	23,082,594	226,542,536
D. UNCOMPENSATED CHARITY CARE												
1. Charges (Measure of actual effort)												
Lubbock	21,920,589	24,738,369	25,972,322	30,436,103	37,919,984	39,563,257	24,289,635	22,747,788	23,287,415	23,739,455	26,575,567	301,190,484
Amarillo	5,203,995	5,889,065	6,592,285	9,391,525	10,306,939	11,754,805	10,809,912	10,912,997	10,810,563	10,990,884	12,229,229	104,892,199
El Paso	20,084,507	19,677,277	26,419,799	29,596,495	32,373,296	38,945,936	33,981,562	29,545,890	29,829,439	33,181,399	39,354,117	332,989,717
Odessa	2,900,907	3,559,611	4,119,462	3,840,003	4,618,637	5,307,410	5,144,591	5,383,947	5,410,228	4,923,093	5,031,268	50,239,157
Total	50,109,998	53,864,322	63,103,868	73,264,126	85,218,856	95,571,408	74,225,700	68,590,622	69,337,645	72,834,831	83,190,181	789,311,557

**TEXAS TECH UNIVERSITY HEALTH SCIENCES CENTER
SCHOOL OF MEDICINE**

FACULTY PHYSICIAN PROVIDER PLANS	1990	1991	1992	1993	1994	1995	1996	1997	1998	1999	2000	Total
2. Unreimbursed Charity Care												
Lubbock	11,860,371	13,167,494	16,770,782	20,414,060	25,839,019	26,384,741	19,154,597	16,933,779	17,705,392	13,866,706	16,077,468	198,174,409
Amarillo	2,377,028	2,641,512	2,598,957	3,821,305	5,626,691	6,072,562	5,872,105	5,955,622	6,311,987	5,850,593	6,614,126	53,742,488
El Paso	8,875,585	9,579,518	15,976,638	19,052,178	26,868,693	28,812,376	28,418,791	24,122,841	23,763,598	23,409,906	27,493,874	236,373,998
Odessa	1,363,011	1,747,439	1,915,159	1,860,472	2,316,628	2,683,638	3,341,523	3,385,068	3,295,077	2,811,294	2,998,729	27,718,038
Total	24,475,995	27,135,963	37,261,536	45,148,015	60,651,031	63,953,317	56,787,016	50,397,310	51,076,054	45,938,499	53,184,197	516,008,933

**TEXAS TECH UNIVERSITY HEALTH SCIENCES CENTER
SCHOOL OF MEDICINE**

FACULTY PHYSICIAN PROVIDER PLANS	1990	1991	1992	1993	1994	1995	1996	1997	1998	1999	2000	Total
2. Number of Indigents Served												
Lubbock	23,271	24,343	26,415	27,983	31,183	28,335	19,486	18,450	19,110	19,299	21,530	259,405
Amarillo	6,167	10,352	16,193	19,664	22,305	22,421	23,067	26,179	22,047	14,309	20,711	203,415
El Paso	12,315	12,408	19,375	21,268	22,617	28,786	27,596	25,040	26,134	27,018	34,720	257,277
Odessa	5,247	4,695	4,817	5,366	6,263	5,852	5,358	6,949	6,408	6,144	6,231	63,330
Total	47,000	51,798	66,800	74,281	82,368	85,394	75,507	76,618	73,699	66,770	83,192	783,427
3. MEDICAID REIMBURSEMENT: 1990-2000												
A. TOTAL BILLINGS												
Lubbock	11,364,018	12,483,337	15,187,442	17,401,000	21,125,301	22,311,137	20,134,465	18,995,511	19,217,459	19,070,906	21,349,309	198,639,885
Amarillo	3,733,959	4,552,426	5,062,546	7,086,378	7,584,633	8,591,689	9,785,426	10,209,202	10,042,340	10,219,609	11,284,500	88,152,708
El Paso	10,246,548	12,380,660	15,826,705	21,577,017	20,190,376	29,495,977	27,177,179	22,794,090	23,172,510	24,848,146	28,835,204	236,544,412
Odessa	2,653,689	3,324,770	3,923,663	3,606,720	4,077,584	4,658,759	4,548,454	4,949,689	4,942,695	4,588,880	4,491,407	45,766,310
Total	27,998,214	32,741,193	40,000,356	49,671,115	52,977,894	65,057,562	61,645,524	56,948,492	57,375,004	58,727,541	65,960,420	569,103,315
B. AMOUNT RECEIVED												
Lubbock	5,039,227	5,737,878	6,857,390	7,288,736	8,676,265	8,498,614	8,115,709	6,717,246	7,320,239	7,260,325	8,558,875	80,070,504
Amarillo	2,184,488	2,757,426	3,093,724	3,793,310	4,222,634	4,291,115	4,780,812	5,077,710	4,424,560	4,470,035	4,765,541	43,861,355
El Paso	5,052,819	6,654,967	8,706,009	9,671,802	10,906,741	11,279,849	10,866,487	9,161,718	9,410,166	9,833,393	10,895,311	102,439,262
Odessa	1,315,935	1,609,035	2,043,047	1,892,212	2,133,169	2,336,439	2,101,065	2,409,078	2,086,656	2,089,226	1,914,866	21,930,728
Total	13,592,469	16,759,306	20,700,170	22,646,060	25,938,809	26,406,017	25,864,073	23,365,752	23,241,621	23,652,979	26,134,593	248,301,849
C. NUMBER OF MEDICAID CLIENTS												
1. Number of Medicaid Visits												
Lubbock	41,802	43,726	51,021	57,751	67,289	74,673	63,507	55,975	59,643	59,493	61,726	636,606
Amarillo	23,189	29,848	33,124	28,588	29,674	33,106	33,885	36,925	35,723	55,895	54,540	394,497
El Paso	31,950	32,192	45,481	57,230	60,662	79,560	84,218	71,416	78,155	81,899	88,928	711,691
Odessa	18,646	16,680	18,388	18,444	22,572	26,550	27,261	23,655	20,515	19,806	18,538	231,055
Total	115,587	122,446	148,014	162,013	180,197	213,889	208,871	187,971	194,036	217,093	223,732	1,973,849
2. Number of Medicaid Served												
Lubbock	12,019	12,796	14,261	16,707	18,827	18,782	17,223	16,006	16,398	16,816	18,738	178,573
Amarillo	8,546	7,369	9,903	8,904	9,749	16,471	17,896	20,002	18,290	10,725	10,564	138,419
El Paso	8,162	8,225	9,703	17,014	14,275	21,938	24,984	21,733	22,961	22,994	27,975	199,964
Odessa	4,492	4,070	4,153	4,705	5,205	4,885	4,859	6,424	5,943	5,958	5,627	56,321
Total	33,219	32,460	38,020	47,330	48,056	62,076	64,962	64,165	63,592	56,493	62,904	573,277

PERFORMANCE MEASURES

MEASURE	1999	2000
GRADUATE BIOMEDICAL SCIENCE EDUCATION		
Graduate School enrollment	48	60
ALLIED HEALTH EDUCATION		
Percent of graduates passing the certification / licensure exam on the first attempt	89.0%	94.0%
Percent of graduates who are licensed or certified in Texas	87.0%	76.4%
Allied Health enrollment	454	444
NURSING EDUCATION		
Percent of BSN graduates passing the national licensing exam on the first attempt in Texas	79.0%	86.0%
Percent of BSN graduates who are licensed in Texas	93.0%	96.0%
Percent of MSN graduates granted Advanced Practice Status in Texas	57.0%	71.0%
Nursing School enrollment	391	396
PHARMACY EDUCATION		
Percent of graduates passing the national licensing exam on the first attempt	N/A	100.0%
Percent of graduates who are licensed in Texas	N/A	N/A
Pharmacy School enrollment	207	260
CONDUCT RESEARCH		
Total external research expenditures	5,314,135	6,600,929
Research expenditures as a percent of state appropriated expenditures	6.62%	8.11%
Research expenditures as a percent of state appropriations for research	252.58%	251.23%
INSTITUTIONAL SUPPORT		
Administrative Cost	5.55%	5.49%

