

**Catalog
2014 - 2015**

Catalog

The School of Nursing Catalog is an official publication of Texas Tech University Health Sciences Center (TTUHSC), contains policies, regulations, procedures, programs, courses, schedules and fees in effect when the Catalog is posted on the website. A student is expected to complete the degree requirements set forth in the School of Nursing Catalog in effect at the time the student enters the program. Students readmitted to the TTUHSC School of Nursing are expected to complete the degree requirements set forth in the Catalog that is current at the time of readmission. Only with the specified approval of the appropriate department chair may a different Catalog be selected. In no case, may a student complete the requirements set forth in a catalog more than seven years old. The Catalog is published at least biennially and the provisions are applicable during the stated school year. Other conditions of graduation

TABLE OF CONTENTS

About TTUHSC

Welcome to the University	10
TTUHSC Institutional Administration.....	12
TTUHSC Information	13
H, C	13
H, C	13
H, C B, H	13
H, C A	14

About TTUHSC SON

School of Nursing Information	15
C	15
B, H	15
A	16
SON Administration.....	17
D	17
B, F	17
A, D	17
.....	19
Student Affairs and Education Support	
Services Contact Information.....	20
A	20
	c3.

32
 A 33
 C 33
 E 34
 H 34
 H 34
 H 34
 34
 E 35
 35
 H C H 36
 36
 Student Services..... 37
 G 37
 Counseling Services 37
 International Student Application Policy.. 38
 Organizations..... 39
 A C G)..... 39
 Professional Societies..... 39
 C H 39
 39
 G 39
 G A 39
 A 40

Finances

Financial Information..... 41
 F 42
 F 42
 F A 42
 Scholarships 43

General Information

General Information 45
 A D A (ADA) .. 4.....

.....	93	to Graduate Program	108
A,	93	G	108
.....	93	C	108
.....	93 A,	108
Degree Plan	94	108
.....	94	108
RN to BSN Program Course		A,	109
Descriptions	95	109
		109
Graduate Programs		109
Graduate Department	100	Degree Plan	110
.....	100	110
Master of Science in Nursing	101	110
.....	101	110
.....	101	MSN Degree Course Requirements for	
MSN Application and Admission		Leadership Programs	111
Information	101	MSN Degree Course Requirements for	
.....	102	APRN Programs	114
A	102	MSN Collaborative TTUHSC-Angelo State	
A	103	(ASU) Degree Course Requirements	119
C	104	Post Masters Certificate Course	
C	104	Requirements	123
C B	105		
D	105	Doctorate of Nursing Practice (DNP)...	129
Special Student Enrollment	105	129
.....	105	129
E	106	DNP Application and Admission	
A	106	Information	129
A	106	A	129
C	106	A	130
.....	106	C	131
.....	107	C B	131
.....	107	132
.....	107	D	132
Recognition of Previous Learning	107	Special Student Enrollment	133
.....	107	133
Offer of Admission	108	D	133
Degree Requirements for Students Admitted		E	133
		A	133
		133
		C	133

.....	134
.....	134
Recognition of Previous Learning.....	134
.....	134
Offer of Admission.....	135
Degree Requirements for Students Admitted to Program.....	135
G.....	135
C.....	135
D C H.....	135
E.....	136
A.....	136
D.....	136
A D.....	136
C.....	137
C.....	137
C H C.....	137
Degree Plan.....	137
DNP Degree Requirements and Course Progression.....	139
Graduate Department Course Descriptions.....	141
Faculty	
Faculty.....	155

About TTUHSC

Welcome to the University

Welcome to the Texas Tech University Health Sciences Center School of Nursing. You have made an excellent choice for a comprehensive, state-of-the-art nursing education.

We have an outstanding and innovative faculty with the highest quality of ideas and educational methods who are motivated to help you achieve academic success and a promising future as a health care professional.

When you complete your studies and graduate, you will join our Texas Tech Nursing Alumni who are serving patients, conducting research and teaching across Texas and the nation.

Thank you for joining our Texas Tech family. Best wishes for a rewarding and successful future!

***Robert L Duncan, Chancellor
Texas Tech University System***

Texas Tech University Health Sciences Center Information

Mission

The mission of the Texas Tech University Health Sciences Center is to improve the health of people by providing high quality educational opportunities to students and health care professionals, advancing knowledge through scholarship and research, and providing patient care and service.

Vision

Texas Tech University Health Sciences Center will become a nationally recognized health sciences university.

Brief History

The Texas Tech University School of Medicine was created by the 61st Texas Legislature in May, 1969 as a multi-campus institution with Lubbock as the administrative center, and with regional campuses at Amarillo, El Paso, and Permian Basin. In 1979, the charter was expanded to become the Texas Tech University Health Sciences Center (TTUHSC), leading the way for establishment of the Schools of Nursing and Allied Health Sciences and the Graduate School of Biomedical Sciences. In 1993, the legislature authorized the establishment of a School of Pharmacy to be located in Amarillo. In addition, Allied Health Sciences programs were expanded to Amarillo and the Permian Basin. In 2003, the legislature authorized the establishment of a four-year medical school in El Paso, and in 2011, the Gayle Greve Hunt School of Nursing was established, also located in El Paso. The seven schools are committed

to regionalized, multi-campus educational experiences, and to the related biomedical research, graduate studies, patient care, and community service required of a health sciences center. A primary effort is made to achieve a balanced group of students with qualified minority students, diverse age groups, and heterogeneous backgrounds in educational and life experiences. A special effort is made to recruit applicants from West Texas and from rural and border communities.

The Health Sciences Center has as its major objectives the provision of quality education and the development of academic, research, patient care, and community service programs to meet the health care needs of the 108 counties of West Texas, which comprise 50% of the land mass and 11% of the population of the total state. This 131,000 square mile service area and population of 2.7 million has been, and remains highly underserved by health professionals and accessible health care facilities, despite the substantial and meaningful contribution made by our institution. Demographic shifts in West Texas populations, as well as socioeconomic and epidemiologic characteristics of its subgroups, create major and specific demands for service. While education of students and residents remains the primary focus of the institution, there has been an important impact on the health status of West Texas. The lack of a single locus of population density has resulted in the regionalization of medical

and health care education and patient

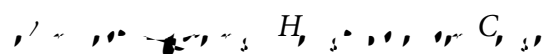
BSN students were admitted in the Permian Basin. The first students were admitted to the Master of Science in Nursing track in 1988, and the Accelerated Second Degree track was launched in Austin and in Lubbock in 2005, and is now offered in Abilene, the Permian Basin, Amarillo, and Dallas-Ft. Worth area. In 2008, the inaugural cohort of doctoral students was admitted into the Doctor of Nursing Practice degree program, and in 2009, the Traditional BSN program was expanded to include Abilene and the Permian Basin.

The TTUHSC School of Nursing is known for innovation in nursing education, excellent student retention and graduation rates, above national average National Council Licensure Examination (NCLEX) scores, and producing well-prepared nurses for West Texas and beyond.

School of Nursing Accreditation

In November 1982, the undergraduate

sin. The undergn(url4.919(Je)6(JT*b)12(i8(e3.T2(t)10(t)6.)]TJ0 -io)12(n a)9(n)4(d g)-5(rad6deg)-5(r)13(e)-4.9(e



School of Nursing Administration

Michael L. Evans, PhD, RN, FAAN

Professor and Dean

UMC Endowed Chair for Excellence in
Nursing

Phone: (806) 743-2738

michael.evans@ttuhsc.edu

BUSINESS and FINANCE

Linda Lane

Assistant Dean, Business and Finance

Phone: (806) 743-2728

linda.lane@ttuhsc.edu

ACADEMIC DEPARTMENTS

Traditional Undergraduate Department Traditional BSN Program

Kathryn Sridaromont, PhD, RNC, MSN

Associate Dean / Department Chair

Phone: (806) 743-2729

Fax: (806) 743-1198

kathy.sridaromont@ttuhsc.edu

Ann Hagstrom, MSN, RN, NCSN

Assistant Professor, Traditional BSN

Program Director, and Faculty Champion

Phone: (806) 743-2793

Fax: (806) 743-1198

ann.hagstrom@ttuhsc.edu

Non-Traditional Undergraduate Department

RN to BSN and Second Degree Programs

Melinda Mitchell Jones, MSN, JD, RN

Associate Dean / Department Chair

Phone: (806) 743-4842

Fax: (806) 743-2792

melinda.mitchell.jones@ttuhsc.edu

Darlene Lacy, PhD, RN

Assistant Professor and RN to BSN Program
Director

Phone: (806) 743-4842

Fax: (806) 743-2792

darlene.lacy@ttuhsc.edu

Laura Opton, DHSc, RN, CNE

Assistant Professor and Second Degree
Program Director

Phone: (806) 743-2730

Fax: (806) 743-2792

laura.opton@ttuhsc.edu

Graduate Department

**MSN Advanced Practice RN Program
(Nurse Practitioner and Nurse Midwifery
Tracks) and DNP Program (APRN Track)**

***Emily Merrill, PhD, RN, FNP, BC, CNE,
FAANP***

Associate Dean / Department Chair for
Advanced Practice RN Programs

Phone: (806) 743-2730 ext. 279

Fax: (806) 743-1622

emily.merrill@ttuhsc.edu

Tara Hilliard, MSN, RN, ACNP-BC

Assistant Professor and Program Director,

Adult-GerontologGS1 gs/Fm0 DoQ/CS0 CS 0 0 0 SCN0.6/CS3Teace (*[3.9(og6(k806) 743-2730 ext. 279)]TJT* [

Tara Hilliard, MSN, RN, ACNP-BC

Tara Hilliard, PhD, RN, FNP, BC, CNE, FAANP

REGIONAL SUPPORT**Permian Basin*****Sharon Cannon, EdD, RN***

Professor and Medical Center Hospital

Regional Dean Endowed Chair,

Co-Director, Center of Excellence in

Evidence-Based Practice

800 West 4th Street

Odessa, TX 79763

Phone: (432) 335-5150

Fax: (432) 335-5169

sharon.cannon@ttuhsc.edu**Abilene*****Pearl Merritt, EdD, MSN, MS***

Professor and Regional Dean

1674 Pine Street

Abilene, Texas 79601

Phone: (325) 696-0503

Fax: (325) 676-3891

pearl.merritt@ttuhsc.edu

Student Affairs and Education Support Services Contact Information

ADMISSIONS and STUDENT AFFAIRS

3601 4th Street, STOP 6264
Lubbock, TX 79430

BSN Transcript and Core Curriculum Evaluation***Rosie Gomez***

3601 4th Street, STOP 6264

Room 2C178

Lubbock, TX 79430

(806) 743-4855 / (800) 493-3954

Fax: (855) 282-5823

rosie.gomez@ttuhsc.edu**Program Support, Admissions and Enrollment*****Jeannette Diaz***

3601 4th Street, STOP 6264

Room 2C175

Lubbock, TX 79430

(806) 743-2730 ext 261/ (800) 493-3954

Fax: (855) 282-5824

jeannette.diaz@ttuhsc.edu**GRADUATE DEPARTMENT****MSN Advising and Admissions*****Georgina Barrera***

3601 4th Street, STOP 6264

Room 2C186

Lubbock, Texas 79430

(806) 743-2762 / (800) 493-3954

Fax: (855) 282-5826

georgina.barrera@ttuhsc.edu**MSN Program Support*****Veronica Garcia***

3601 4th Street, STOP 6264

Room 2C185

Lubbock, TX 79430

(806) 743-2765 / (800) 493-3954

Fax: (855) 282-5826

veronica.garcia@ttuhsc.edu**MSN Enrolled Student Management*****Rebecca Akin-Sitka, MEd***

3601 4th Street, STOP 6264

Room 2C184

Lubbock, Texas 79430

(806) 743-2573 / (800) 493-3954

Fax: (855) 282-5826

rebecca.akin-sitka@ttuhsc.edu**DNP Advising, Admissions, and Student Management*****Lauren Sullivan, MEd***

3601 4th Street, STOP 6264

Room 2C179

Lubbock, Texas 79430

(806) 743-2748 / (800) 493-3954

Fax: (855) 282-5826

lauren.sullivan@ttuhsc.edu

AFFILIATION AGREEMENTS

Stephanie Jones

3601 4th Street, STOP 6264

EDUCATION SUPPORT SERVICES

Information Technology

Joe Ferrer, Senior Director

3601 4th Street, STOP 6264

Lubbock, TX 79430

(806) 743-4248

Fax: (806) 743-1697

joe.ferrer@ttuhsc.edu

Academic Services

Clinical Services and Community Engagement

Associate Dean – Christina R. Esperat, PhD, RN, FAAN

Because faculty within the School of Nursing may choose development of a clinical studies program, the School of Nursing maintains an active Clinical Studies Program. Faculty can participate in the delivery of care to residents of West Texas in many institutions and health care facilities.

The School of Nursing operates sites for direct access to services by community clients at the Larry Combest Community Health & Wellness Center in Lubbock.

The Larry Combest Community Health & Wellness Center staff and faculty serve medically-underserved populations by providing primary care services to clients over the life span. The Larry Combest Community Health & Wellness Center, a Federally Qualified Health Care nurse managed center provides essential health care access points for residents of the community unable to obtain the needed services for health promotion and disease prevention. The Larry Combest Community Health & Wellness Center is supported by funding from the School of Nursing, federal grants, and reimbursements from third party payers.

Research

Associate Dean - Alyce Ashcraft, PhD, RN, CNE, ANEF

Faculty within the School of Nursing also have the choice of developing a research program. The School of Nursing has designed the research program to provide assistance and support for faculty in promoting research interests and developing proposals for funding and implementation of research projects. Current research initiatives focus on improvement of the health of diverse populations through collaborating efforts and providing opportunities for all nursing students to be actively involved in faculty research projects.

Degree Programs and Options

Traditional Undergraduate Department **Department Chair:**

Kathryn Sridaromont, PhD, RNC, MSN

For students who are not registered nurses, the BSN program at the Health Sciences Center offers the opportunity to receive a Bachelor's of Science in Nursing degree in four semesters, with admission once each year during the fall session. Students must complete the nursing courses in sequential order.

Non-Traditional Undergraduate Department

Department Chair:

Melinda Mitchell Jones, MSN, JD, RN

For students with a non-nursing bachelor's degree residing in the Abilene, Amarillo, Austin/Hill Country, Dallas/Fort Worth, Lubbock, and Permian Basin communities. A second degree web-based accelerated baccalaureate nursing degree program is offered in a 12-month full-time curriculum. The program admits students in January each year and requires completion of all pre-requisite courses before entry. The program allows completion of 61 semester credit hours of upper division coursework for the BSN while remaining in the student's community.

For registered nurses with an associate degree or diploma, the RN to BSN Program (RN-BSN) provides the opportunity to receive a Bachelor's of Science in Nursing through web-based education. A full-time student has the opportunity to complete the degree in two semesters; however, students have the option to attend on a part-time basis. The program admits students for the Fall, Spring, and Summer semesters. Students may refer to the RN to BSN section of the catalog for more information, and may contact the appropriate Student Affairs Coordinator to discuss degree plan options.

Graduate Department

Department Chair:

Barbara Cherry, DNSc, MBA, RN, NEA-BC

MSN Leadership Program:

Administration, Education, and Informatics Tracks, DNP Program

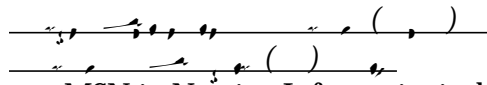
The MSN with a nursing administration focus prepares students to assume nursing leadership and management positions in a variety of health care settings. Students must have a BSN as the minimum RN preparation for admission to the MSN in nursing

MW1(n tDt)1013(ep)-5(a)7TJT*csmenrd-5(io)1i(h)4(e F)2ha(e s)-8(et)no the RN to Bt5 4(h)4(e F)20G1(dra19(t)-e S)

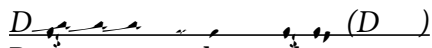
Master of Science in Nursing (MSN) – Gr7(A)11(d)-6(m)-2(

as a clinical educator in a healthcare setting. Students must have a BSN as the minimum RN preparation for admission to the MSN in nursing education track. For further information about the program, students can refer to the Graduate Department section of the catalog.

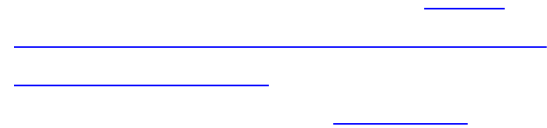
executive leadership, applied clinical research, and faculty leadership roles. The program allows students to participate



The MSN in Nursing Informatics is the first NI masters offered by a Texas-based University. This program fills a critical gap in advanced nursing education to prepare nurses for expanding roles in nursing informatics with emphasis on data management; analytics and clinical decision support; electronic health record adoption, implementation and evaluation; systems life cycle; and evaluating innovative technology solutions for clinical care. Students must have a BSN as the minimum RN preparation for admission to the MSN NI track.



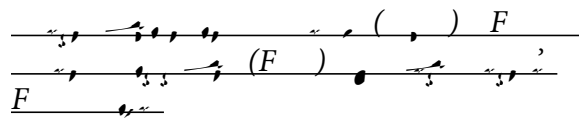
Post-masters advanced practice nurses and clinical administrative leaders have the opportunity to obtain the Doctor of Nursing Practice (DNP), a terminal degree designed for practice at the highest level of nursing. Students interested in the advanced practice nursing specialty must have a master's degree and be prepared as a nurse practitioner, nurse midwife, clinical nurse specialist, or nurse anesthetist with national certification. Students interested in the executive leadership specialty must have a master's degree and experience in a healthcare leadership position. The primary goal of the DNP program is to prepare graduates for clinically intensive leadership careers including advanced clinical practice,



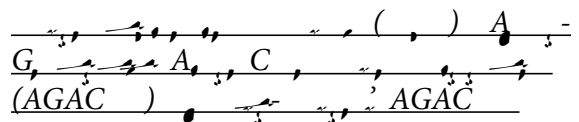
College of Nurse Midwives educational requirements and standards.

Upon completion of course requirements, graduates of the master's and post-master's tracks are eligible to sit for one or more of the following certification exams:

- Pediatric Nursing Certification Board (PNCB) Exam (PNP, both acute care and primary care)
- American Nurses Credentialing Center (ANCC) Exam (AGACNP, FNP, PNP)
- American Academy of Nurse Practitioners Certification (AANP) Exam (FNP)
- American Midwifery Certification Board Examination (AMCB)
- American Association of Critical Care Nurses (AACN) (AGACNP)



Prepares graduates to assume a primary care provider role for the population of the family across the lifespan (infants, children, adolescents, adults, and older adults). FNPs practice in variety of settings including urban, rural, and underserved areas. Patient care needs and not the setting determine the scope of practice.



Prepares graduates to assume responsibilities for promoting, maintaining, and restoring health to acutely or critically ill adults. The patient population includes young adults, adults, and older adults. Patient care needs and not the setting

Essential Eligibility Requirements for Participation in the School of Nursing

Each student/applicant should use the following standards (essential eligibility requirements) for participation in the School of Nursing and examples of necessary activities (not all inclusive) to assist in determining the necessity of accommodations or modifications.

Essential Functions	Examples of Necessary Activities
Critical thinking abilities sufficient for clinical judgment.	Identify cause-effect relationships in clinical situations, develop nursing care plans.
Interpersonal abilities sufficient to interact with individuals, families, and groups from a variety of social, emotional, cultural, and	



Core Curriculum

Given the rapid evolution of necessary knowledge and skills and the need to take into account global, national, state, and local cultures, the core curriculum for institutions of higher education in the State of Texas must ensure students develop the essential knowledge and skills needed for success in college, career, and individual communities, and in life.

The Texas Higher Education Coordinating Board has approved a 42 semester credit hour core curriculum for all undergraduate students in Texas. The TTUHSC School of Nursing will ensure the students transferring into the baccalaureate nursing programs have completely met the core competencies of the 42 semester credit hour curriculum. Objectives for the core curriculum competencies include the following:

- **Critical Thinking Skills** – includes creative thinking, innovation, inquiry, and analysis, evaluation and synthesis of information.
- **Communication Skills** – includes effective written, oral, and visual communication.
- **Empirical and Quantitative Skills** – includes the manipulation and analysis of numerical data or observable facts resulting in informed conclusions.
- **Teamwork** – includes the ability to consider different points of view and to work effectively with others to support a shared purpose or goal.
- **Personal Responsibility** – includes the ability to connect choices, actions, and consequences to ethical decision-making.

- **Social Responsibility** – includes intercultural competence, knowledge of civic responsibility, and the ability to engage effectively in regional, national, and global communities.

Core Curriculum Requirements

CORE CURRICULUM REQUIREMENTS	
COMMUNICATION (English Rhetoric/Composition) (010)	6 credit hours
MATHEMATICS (020)	3 credit hours
LIFE and PHYSICAL SCIENCES (030)	6 credit hours
LANGUAGE, PHILOSOPHY, and CULTURE (040)	3 credit hours
CREATIVE ARTS (050)	3 credit hours
AMERICAN HISTORY (060)	6 credit hours
GOVERNMENT/POLITICAL SCIENCE (070)	6 credit hours
SOCIAL AND BEHAVIORAL SCIENCES (080)	3 credit hours
COMPONENT AREA OPTION	6 credit hours
TOTAL CORE CURRICULUM HOURS	42 credit hours

General Education Competencies

At Texas Tech University Health Sciences Center, we expect students to enter the institution with a foundation in certain basic intellectual competencies. These include critical thinking skills, communication skills, empirical/quantitative skills, teamwork, personal responsibility, and social responsibility. Through our undergraduate programs, we seek to build upon that existing foundation in order to enhance these basic competencies. TTUHSC uses a variety of methods to measure student progress in developing the desired competencies, including the ETS-Proiciency Profile. We will use the results from this instrument to identify the strengths and weaknesses of different student sub-groups. These results will be used to make ongoing improvements to our undergraduate degree programs.

Employment

The decision to work while enrolled as a student in the School of Nursing rests with the individual student; the school assumes no responsibility for student employment. Students should check with their enrolled program to determine if employment is discouraged. A student employed in a healthcare agency has the responsibility, personally and professionally, to accept and engage in only activities falling within the position description for which the student is qualified and do not conflict with legal and accreditation expectations.

Health Services

Medical services for TTUHSC students are available at the Abilene, Amarillo, Dallas, Lubbock, and Permian Basin, campuses.

Refer to the  online at www.ttuhs.edu/student-services/.

Health Insurance

Students are required by TTUHSC to pay a Medical Service Fee each semester. With this fee, access to healthcare is available at no charge for minimal or limited minor problems. Access to healthcare is through a TTUHSC clinic or a regional contracted provider (when available) for distance students.

This fee is only for students who are not currently covered by a health insurance plan.

For more information, contact the Student Health Insurance Office at (817) 259-2699.

learning environments. These realistic environments support experiential learning activities promoting the development and maintenance of intra-professional and interprofessional competencies. Faculty and students from the SCHOOL OF NURSING, School of Medicine, School of Allied Health Sciences, School of Pharmacy, and Graduate School of Biomedical Sciences are engaged in simulation-based activities supported by these centers.

TTUHSC Libraries of the Health Sciences

The [TTUHSC Libraries of the Health Sciences](#) provide facilities and learning/information resources with four physical sites in Lubbock, Amarillo, El Paso, and Odessa. The TTUHSC Library system collections presently contain more than 321,147 bound volumes, of which over 218,539 are located in Lubbock and Odessa. Over 55,182 electronic books are also available. The system has 209 print journal subscriptions and approximately 28,751 electronic journals available at all TTUHSC sites. Over 17,466 audiovisuals are also available system-wide. The libraries feature study carrels, interlibrary loan and photocopy services, reference services, and Internet access/connectivity.

The TTUHSC Libraries provide electronic access to more than 612 databases including but not limited to: MEDLINE, PubMed, CINAHL Plus with Full Text, Nursing Reference Center, Anatomy.tv, Health and Psychosocial Instruments, LEXICOMP, MICROMEDEX, PsycINFO, MedlinePlus, EXAM MASTER online (NCLEX-RN), Web of Knowledge, Scopus, ERIC, OVID full-text, Cochrane Databases, ClinicalKey, Science Direct ejournals, as well as general

and academic TexShare databases. To meet the needs of all TTUHSC users including distance education, the TTUHSC Libraries provide around-the-clock, seven-days-a-week access to several electronic library resources and services. All electronic holdings of the library are available for users through the use of the e-raider account.

Bibliographic tools such as RefWorks and Endnote, full-text electronic journals, and a full array of electronic books are also accessible. On-site access to licensed electronic resources is available via a proxy server to all TTUHSC faculty, staff, and students. The libraries of the TTUHSC system have a common online catalog for access to holdings at all TTUHSC libraries.

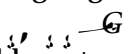
- Preston Smith Library of the Health Sciences, a 50,000 square foot facility on the Lubbock campus, features 29 group study rooms and a 60 station Learning Resource Center (LRC).
- Harrington Library of the Health Sciences in Amarillo, has two computer areas with 15 stations, 106 seats and 3 study rooms
- Della Montes-Gallo Library of the

may have to purchase or rent specific textbooks. Each semester, the required and optional texts are listed for each course on the following website: <http://nursing.ttuhs.edu/textbooks>. Generally students may purchase or rent textbooks through a vendor of the student's choice, though some custom printed texts may be available only through the college bookstore which will be noted on the website.

Student Services

TTUHSC Student Services is an institutional centralized information office providing an array of student support services. Student Services collaborates with the school's student affairs offices to offer assistance to aid in the success of TTUHSC students. For more information, please visit their website: <http://www.ttuhs.edu/student-services/>.

Graduation

Students planning to graduate **MUST** complete the  form. Students should create a "Diploma" address in WebRaider to ensure the diploma will be mailed to the proper address. The TTUHSC Student Services office uses the diploma address to mail the diploma only if the diploma is not picked up at commencement.

Students must be enrolled at Texas Tech University Health Sciences Center and registered in the School of Nursing for a minimum of one (1) credit hour in the term of graduation.

Counseling Services

As in all professional health fields, if stress is not dealt with effectively, it can interfere with optimal academic performance. For a student experiencing excessive stress, the SON highly recommends self-referral for counseling. The following are the counseling options available for Lubbock, Permian Basin, and off-campus long distance education students.

- [Program of Assistance for Students \(PAS\)](#) - The PAS is a professional, confidential, no cost counseling service for students and family members living in their households. Five sessions (per household) per academic year are available from licensed counselors who can provide assistance for a variety of problems related to daily living, including: family and relationship problems, depression, alcohol and drug abuse, anxiety, and stress. No information is released to anyone in the SON and use of the program does not become part of a student's record. PAS offices are located in the Department of Psychiatry at TTUHSC East Wing, room 1A122. To schedule an appointment for yourself or a member of your household, Lubbock students can call (806) 743-1327 and identify yourself as a SON

- **Amarillo students** can receive counseling through the Program of Assistance for Students (PAS). The contact person for PAS services in Amarillo is Ron Owens, PhD, (806) 354-5620.
- **Austin students** should contact: Samaritan Center for Counseling at (512) 451-7337 (select 0#) or e-mail info@samaritan-center.org. Mention that you are a TTUHSC student and would like to use your PAS counseling benefit.
- **Lubbock students** have two options for counseling services: the Student Counseling Center (SCC) or the Program of Assistance for Students (PAS). For information on the SCC go to the website <http://www.depts.ttu.edu/scc/> and for the PAS program go to their website <http://www.ttuhs.edu/student-services/documents/PAS-General-Brochure-2011.pdf>.
- **Off-campus long distance education students** who want to receive counseling services should contact the Lubbock office of the Program of Assistance for Students (PAS) - (800) 327-0328 - to inquire about the availability of area counseling services.
- **Permian Basin students** can receive counseling through the Program of Assistance for Students (PAS). The provider for PAS services in the Permian Basin is the Samaritan Counseling Center of West Texas, (432) 563-4144.

A 24-hour crisis/help line is available to all SON students and members of their household through the Program of Assistance for Students. The number for students in Lubbock is (806) 743-1327. The number for students in other areas is (800) 327-0328.

International Student Application Policy

International applicants must demonstrate adequate proficiency in the English language before they can be considered for admission. All international applicants are required to take the Test of English as a Foreign Language (TOEFL) and have an official score report sent directly to the University from Educational Testing Service (ETS). Because all educational programs in the School rely heavily or totally on computer and internet supported learning material, only the TOEFL *IBT* Test is accepted for purposes of making admission decisions.

- **TOEFL *IBT* minimum recognized scores:** Applicants must have a minimum score of 20.76 on all sections: (reading, listening, speaking, and writing) with a minimum total score of 83 to be considered for admission.

Applicants who are citizens of countries exempt from English proficiency requirement (considered to have English as the predominant language) include: Australia, Canada (except the Province of Quebec), Commonwealth Caribbean countries (Anguilla, Antigua and Barbuda, Aruba, Bahamas, Barbados, Belize, Bermuda, Bonaire, British Virgin Islands, Cayman Islands, Cuba, Curaçao, Dominica, Dominican Republic, Ecuador, Grenada, Guyana, Haiti, Jamaica, Jersey, Saint Kitts and Nevis, Saint Lucia, Saint Vincent and the Grenadines, Suriname, Trinidad and Tobago, United States Virgin Islands, and the United Kingdom).

St. Kitts and Nevis, St. Lucia, St. Vincent, Trinidad and Tobago, and Turks and Caicos Islands), Republic of Ireland, Liberia, New Zealand, United Kingdom (England, Northern Ireland, Scotland, Wales), and the United States.

Applicants holding degrees from U.S. colleges and/or universities or universities in English proficiency-exempt countries are not required to submit TOEFL scores. The TOEFL requirement may be waived by the School if the student has graduated from a U.S. high school based upon SAT or ACT scores.

Information concerning the TOEFL may be obtained from Educational Testing Service, P. O. Box 899, Princeton, New Jersey 08540, U.S., or their website – www.toefl.org.

- **Transcripts**

Sciences Center with representatives from the School of Allied Health Sciences, Graduate School of Biomedical Sciences, Schools of Medicine, Schools of Nursing and School of Pharmacy. SGA Representatives assist in the promotion of student affairs and activities affecting all students throughout TTUHSC and encourage communication between the schools. Representatives are elected from the undergraduate and graduate programs. For more information regarding the Student Government Association, visit the Student Government Association's Webpage at <http://student.ttuhsu.edu/sga/>.

- [Texas Nursing Students' Association](#)
The Texas Nursing Students' Association grants membership to any student in an Associate Degree, Diploma, Baccalaureate, generic Masters, generic Doctoral program preparing students for RN licensure, as well as RNs in a BSN completion program. This award winning group is highly active at school, state, and national levels. For more information, please visit <http://www.tnsa.org/>.

Finances

Financial Information

Immediately upon acceptance of an offer of admission, the student pays a non-refundable \$100 placement guarantee fee. Failure to pay the fee results in forfeiture of the offer of admission.

To enable the student to approximate expenses, the following table provides an estimated average cost per semester. This information is provided by the TTUHSC Student Business Services office. These estimates are based on the AY 2014-2015 (Fall, Spring, Summer) school year.

Please be aware the figures are **only** estimates. Students may also go online to the Student Business Services website to see updates to tuition at any time. <http://www.scal.ttuhs.edu/busserv/bursar/>.

An installment plan, available for fall and spring terms only, charges an Installment Option Fee each semester to students utilizing the installment payment plan. No installment option is available for the summer semester due to the shortened semester length. Tuition is paid to TTUHSC. Further questions regarding tuition and fees should be directed to the TTUHSC Student Business Services Office at (806)743-7867.

Scholarships

The School of Nursing has the following dedicated scholarships:

Grace Lasater Allensworth Endowed	Lubbock Women's Club – Helen DeVitt Jones
Prosperity Bank Presidential Endowed	Lubbock Women's Club - Joan Bailey Merritt
Myrna Armstrong and Elizabeth (Hanslik) Montalvo Endowed	Dr. Mary Ann Lubno Endowed
Helen Barber Nurse-Midwifery Endowed	Velma Earline Mitchell Memorial Endowed
Billie Kathryn Becknal Endowed	Edith J. Mohler Endowed
Jewel Benton Endowed	Nancy Neal Presidential Endowed
Burrell Family Presidential Endowed	Darlene A. and Bill Norton NP Endowed
Carroll Family Memorial Endowed	Nursing Non-Resident
The CH Foundation Elizabeth (Hanslik) Montalvo Endowed	Nursing Resident (Graduate)
James A. "Buddy" Davidson Charitable Foundation	Nursing Resident (Undergraduate)
Ershel A. Franklin Presidential Endowed	Mauryne Overbey Memorial Endowed
E.A. Franklin Trust & Giles McCrary Endowed	Dr. H.G. Parker and Olive Parker
Helene Fuld Trust Endowed	President's Council Endowed
Mildred and Shirley Garrison	Corbett and Cecilla T. Roberts Endowed
Graduate Potential for Excellence	Marshall Verne Ross Foundation
George and Mary Josphine Hamman Foundation	Rushing Family Presidential Endowed
William Hearst Foundation	Sigma Eta Tau International – Iota Mu Chapter
Velma Brandon Heath Endowed	Sherill Skibell Presidential
Viola Elizabeth Holland Endowed	Ima and Preston Smith Endowed
John Hurt Memorial Endowed	Mary Nell Sowell Presidential
Trixie and Erin Janssen Scholarship Endowed	SON Endowed
Louis B. Ketner Memorial Endowed	SON General
Larabee Endowed	William Tinney Endowed
Earline Mills Lewis Endowed	William Wehner Endowed
Mary Elizabeth Lowell Endowed	Prosperity Bank Graduation Award

In addition, School of Nursing students are eligible for general scholarships and loans administered by the Financial Aid Office, Student Services Office, and Student Government Association. Some organizations, such as Lubbock Woman's Club and the Lubbock Foundation provide scholarships on a consistent basis for nursing students. Scholarship eligibility is based upon the criteria as established by each donor and the TTUHSC School of Nursing. For further information regarding scholarships, please visit <http://www.ttuhschool.edu/son/Scholarships/default.aspx> or contact: School of Nursing Scholarship Office at sonscholarships@ttuhsc.edu or call (806) 743-2443.

For information regarding grants, loans, and policies, please visit: TTUHSC Financial Aid Office online at <http://www.ttuhschool.edu/financialaid/> or contact via email: financialaid@ttuhsc.edu or call (806) 743-3025.

General Information

General Information

Americans with Disabilities Act (ADA) ***(TTUHSC OP 77.14)***

Students seeking accommodations on the basis of disability must register with the office of TTUHSC Student Services at www.ttuhschool.edu/student-services//ada/default.aspx. The ADA Compliance Officer for Students will notify the appropriate School of Nursing Department Chair of the student's need for accommodations. Review the TTUHSC ADA policy located on the TTUHSC Student Services website. For further information, see www.ttuhschool.edu/student-services//ada/default.aspx.

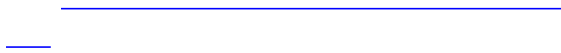
Confidentiality/Health Insurance Portability and Accountability Act of 1996 (HIPAA) ***(TTUHSC OP 52.02 & SON OP 10.050)***

The School of Nursing is dedicated to ensuring each student is current in issues

related to nursing practice and research. One such regulation includes the Health Insurance Portability and Accountability Act (HIPAA).

- Each student is required to provide proof of education in HIPAA training at the beginning of enrollment in the School of Nursing.
- Certificates of compliance are not transferable from another institution because HIPAA certification is institution specific. Thus, all students must take the TTUHSC HIPAA training and provide evidence of compliance certification.
- Students will receive information regarding HIPAA training and will be asked to sign a Confidentiality Agreement during New Student Orientation. All proof of training will be placed in the student's advising file located in the Office of Student Affairs.
- Those who cannot show proof will not be allowed to attend

clinical. In addition, release of confidential information (including verbal communications, written communications, or electronic communications with or about patients or involving patient health information to anyone who does not need the information for treatment, payment, or health



state-of-the-art online technology to deliver evidence-based didactic content. Clinical practicums are provided along with extensive use of simulation technology in an interprofessional and bicultural context to prepare graduates to meet the nursing care needs of the underserved multi-cultural El Paso County community.

Graduate School of Biomedical Sciences

The mission of the Graduate School of Biomedical Sciences is to educate the next generation of scientists and health-related professionals in a dynamic and productive research environment that fosters creativity and discovery. The Graduate School of Biomedical Sciences offers programs leading to MS and PhD degrees in Biochemistry and

School of Pharmacy

The School of Pharmacy's mission is to enhance the lives of the diverse people of Texas and beyond through excellence and innovation in educating health care practitioners, researchers, and educators; providing pharmaceutical care and service; and advancing knowledge through scholarship and research. The School of Pharmacy offers the Doctor of Pharmacy (PharmD) as the single professional degree.

The PharmD is a 4-year professional program, requiring at least two years of pre-professional studies to be completed at any accredited college or university. The School offers programs in Amarillo, Dallas/Fort Worth, Lubbock, and Abilene. The Abilene

Admissions

Undergraduate Departments

Under the guidance of programmatic admissions committees, all qualified applicants are carefully evaluated. Admission to the baccalaureate programs is highly competitive and only the most qualified applicants are selected.

Purpose

The purpose of the Undergraduate Department is to provide educational and experiential learning opportunities in

Application and Admissions Information
Application Deadlines

--	--	--	--

--

--



Although academic criteria (cumulative



Article 15 violation; or received any form of military judgment/punishment/action?

(You may only exclude Class C misdemeanor traffic violations.)

- Are you currently the target or subject of a grand jury or governmental agency investigation?
- Has any licensing authority refused to issue you a license or ever revoked, annulled, cancelled, accepted surrender of, suspended, placed on probation, refused to renew a license, certificate or multi-state privilege held by you now or previously, or ever fined, censured, reprimanded or otherwise disciplined you?
- Within the past five (5) years, have you been addicted to and/or treated for the use of alcohol or any other drug?
- Within the past five (5) years have you been diagnosed with, treated, or hospitalized for schizophrenia and/or psychotic disorders, bipolar disorder, paranoid personality disorder, antisocial personality disorder, or borderline personality disorder?

*Pursuant to Occupations Code §301.207, information regarding a person's diagnosis or treatment for a physical condition, mental condition, or chemical dependency is confidential to the same extent that information collected as part of an investigation is confidential under the Occupations Code §301.466. You may indicate "NO" if you have completed and/or are in compliance with Texas Peer Assistance Program for Nurses (TPAPN) for substance abuse or mental illness.

NOTE: Expunged and Sealed Offenses:

While expunged or sealed offenses, arrests, tickets, or citations need not be disclosed, you are responsible for ensuring the offense, arrest, ticket or citation has, in fact, been expunged or sealed. Submission of a copy of the Court Order expunging or sealing the record in question to the Texas Board of Nursing is recommended. Failure to reveal an offense, arrest, ticket, or citation that is not in fact expunged or sealed, will at a minimum, subject your license to a disciplinary fine. Non-disclosure of relevant offenses raises questions related to truthfulness and character.

NOTE: Orders of Non-Disclosure:
Pursuant to Texas Government Code § [552.142\(b\)](#), if you have criminal matters subject to an order of non-disclosure, you are not required to reveal those criminal matters on the declaratory order form. However, a criminal matter subject to an order of non-disclosure may become a character and fitness issue. Pursuant to other sections of the Government Code [Chapter 411](#), the Texas Board of Nursing is entitled to access criminal history record information subject to an order of non-disclosure, even if you properly did not reveal that matter, the Board may require you to provide information about any conduct that raises issues of character.

Statutes and Rules governing the Petition for Declaratory Order may be found in the Texas Occupations Code §§ [301.257](#), [301.452-304.454](#) ([Nursing Practice Act](#)), and in the Board Rules and Regulations relating to Nurse Education, Licensure and Practice, Texas Administrative Code (TAC) Title 22 Examining Boards §§ [213.27-30](#) and §§ [217.11-12](#). These statutes and rules can be

located on the BON's website www.bon.state.tx.us.

e Nurse Practice Act (_____

Computer Requirements

See Computer Requirements on page 33.

Criminal Background Checks

A Criminal Background Check (CBC) must be completed prior to enrollment at TTUHSC School of Nursing in compliance with [TTUHSC OP 10.20](#). Each student is responsible for the cost of his/her CBC and any additional fees.

Traditional undergraduate students will complete the Criminal Background Check process through the Texas Board of Nursing. Instructions on the process for complying with this requirement will be sent to all new incoming students in the orientation information. This is in accordance with [SON OP 30.312](#). No student will be allowed to matriculate into their respective program without a cleared criminal background check or Declaratory Order with no stipulations.

The following searches are required for students pursuing clinical training through TTUHSC:

- Criminal History Record Information Search (including all residences for the last seven years);
- Social Security Number Trace (residential history, state and year SSN issued);
- Sex Offender Registry;
- Office of Inspector General Sanction Report;
- General Services Administration Excluded List;
- Office of Foreign Asset Control; and
- Texas State Exclusion List.

Additional background checks are required after a break in enrollment in accordance with [TTUHSC OP 10.20](#).

Immunizations

See Immunization Requirements on page 34.

Drug Screening

Drug Screenings may be required if requested by the clinical institution site.

Enrollment without Credit/Course Audit

Students wanting to audit a course for

Council reviews all such requests and may take one of the following actions regarding readmission of a student who withdrew in good standing:

- Eligible and admit,
- Eligible pending space available in nursing courses and in sequence to date of action in relation to other readmission applicants,
- Not eligible.

The Traditional Undergraduate Council may assign requirements to be met as a condition of enrollment, i.e. successful completion of a comprehensive examination. Readmission of a student who has been dismissed or who withdrew for academic or disciplinary causes is based upon the decision of the Undergraduate Program Council.

PRE-REQUISITE COURSES and REQUIREMENTS

The pre-requisite course requirements listed below should be completed with a grade of “C” or higher in each course prior to enrollment in the first nursing course.

These requirements as detailed in the table below include a total of 57 semester credit hours and can be taken at any regionally accredited college or university. A maximum of 15 credit hours can be earned via credit by examination.

The prerequisite courses listed in the following table for the Traditional BSN Program also incorporates the 42 hours of the Texas Tech University Health Sciences Center Core Curriculum for undergraduate nursing degrees. Please see Core Curriculum Requirements on page 28 to review the Texas Core Curriculum requirements.

Important Information about Pre-Requisite Course Requirements

- Pass/Fail grades are not accepted for credit toward degree requirements.
- Applicants may choose to request grades for all non-nursing courses greater than 10 years old not be considered in the GPA for admission. If this option is selected, the credits excluded are not eligible for pre-requisite course consideration and must be retaken for credit. The applicant must have at least 34 credit hours within the past 10 years to use this option.
- Grades earned at all schools attended are calculated in the admission grade point average. The quality points and semester credit hours used to calculate the cumulative grade point average for admission to the School of Nursing are taken from the official transcripts submitted during the application process.

The School of Nursing accepts courses completed via classroom, internet, correspondence, CLEP (College Level Examination Program), or advanced placement examination for which credit with the grade of “C” or higher has been awarded and posted on an official transcript from an accredited college or university when determining completion of pre-requisite non-nursing course requirements.

Texas Success Initiative (TSI)

The Texas Success Initiative (TSI), formerly known as the Texas Academic Skills Program (TASP), is a state-required program that is designed to help ensure undergraduate students' success in their college studies. All students seeking an undergraduate degree from the Texas Tech University Health Sciences Center must satisfy the TSI requirement before enrollment. To obtain TSI details pertaining see [Texas Success Initiative](#).

RECOGNITION OF PREVIOUS NURSING LEARNING

Transfer of Credit

- Applicants are encouraged to meet with a Student Affairs Coordinator to discuss applicability of transfer credit for degree purposes.
- Applicants must submit original copies of official college transcripts from all institutions in which the student has enrolled. The transcripts are reviewed and course work evaluated by the academic advisor and/or Traditional Undergraduate Department Chair. Final determination regarding applicability of completed course work toward degree requirements lies with the Traditional Undergraduate Council.
- Applicants requesting admission to the BSN Program must submit a letter from prior school(s) of nursing attended from the dean or department chair outlining the student's academic standing.
- Course equivalencies for transfer credit are assessed based upon the catalog course description or the course syllabus and/or notes provided by the student. Generally, courses of equivalent course content completed with the grade of "C" or higher at any accredited educational institution will be accepted for transfer credit toward degree requirements.

- Credit for nursing courses cannot be earned via credit by examination.
- A maximum of 35 credits from another school may be accepted via transfer

OFFER OF ADMISSION

Offers of admission will be made approximately eight weeks following the application deadline. Because of limitations on position availability each semester, applicants should respond to the offer of admission no later than the deadline stated in the letter offering admission by returning a \$100 non-refundable placement guarantee fee. Failure to respond by the deadline or participate in a mandatory orientation prior to matriculation results in withdrawal of the offer of admission.

DEGREE REQUIREMENTS FOR STUDENTS ADMITTED TO PROGRAM

Graduation Under a Particular Catalog

A student is expected to complete the degree requirements set forth in the School of Nursing Catalog in effect at the time the student enters the chosen degree or area of study. Only with the specific approval of the appropriate Department Chair may a different Catalog be selected. Students, in all cases are prohibited from completing the requirements set forth in a catalog more than seven years old. The School of Nursing

C is published at least biennially and its provisions are applicable during the following academic year (September 1 through August 31). However, a student registering for the first time at TTUHSC during a summer semester is subject to the degree requirements set forth in the C effective for the Fall semester immediately following the Summer semester.

Maintaining Minimum Academic Requirements

- Maintain a 2.0 GPA for each semester and overall cumulative
- A minimum grade of “C” required in all degree required (nursing) courses.
- Students receiving a “D”, “F” or “WF” in a nursing course are eligible to repeat the course one time only pursuant to recommendation of course faculty.
- Students earning an overall cumulative GPA or a semester GPA less than a 2.0 in the semester of graduation are ineligible for graduation

Academic Dismissal from the School of Nursing will result from the following circumstances:

- A student earning a “D”, “F” or “WF” in two or more nursing courses in one semester is cause for academic dismissal.
- Students earning a “D”, “F” or “WF” in a second nursing course, even when students successfully complete the courses in which the previous “D”s, “F”s or “WF”s were earned.
- Earning less than a 2.0 per semester or cumulative GPA for two consecutive semesters.
- Making a “D”, “F”, or “WF” in the same nursing course twice.

Comprehensive Examinations

Students in the Traditional Undergraduate Department BSN Program must have a passing score on the comprehensive examination administered in NURS4620. If a student is not successful on the examination, the student should meet with the Department Chair to determine the next steps in progression.

Residence Credit

The minimum actual residence credit required of each undergraduate student is 30 hours at TTUHSC, including the final 15 hours in nursing courses taken for a grade. The remaining hours may include transfer credit and correspondence course work. Residence credit as used here means credit for work done while enrolled in and attending classes at TTUHSC and should not be confused with “residence” in the State of Texas for tuition purposes.

Semester Credit Hours and Course Loads

The semester credit hour is the unit of measure for credit purposes. Didactic (lecture) hours are measured on a one-to-one basis; clinical hours are measured on a one-to-three basis. Approximately two hours in preparation for each hour of lecture or recitation and an appropriate amount of time for preparation for clinical activity is required. Traditional Undergraduate Department BSN Program enrollment in 12 or more credit hours per semester (6 or more credit hours in each summer session, or 12 or more credit hours in a full summer session) constitutes full-time enrollment.

The number of semester credit hours a

BSN Department Chair takes into account the quality of prior scholastic work performed and the types of courses involved. Permission is needed to enroll in more than 20 semester credit hours.

Traditional BSN students are required to complete 57 hours of pre-requisite courses and 63 hours of nursing courses, totaling 120 credit hours.

DEGREE PLAN

Degree plans are generally completed by the Student Affairs Coordinator for the Traditional Undergraduate BSN Program during new student orientation. The degree plan may be revised based on a student's ability to successfully progress through

the curriculum. Course enrollment may be limited based on available resources, including but not limited to, availability of clinical sites within the community.

The following degree plan is designed for applicants without a RN license. The sample degree plan provides an overview of a basic course schedule for full time students.

Length of the program varsvh913(7(u)-uclin)8(g)]TJT*[3(sv)6

Sample Degree Plan - Traditional Undergraduate BSN Program

Semester 1		
Number	Course Name	Credits
NURS3307	Health Assessment	(3:2:3)
NURS3901	Foundational Concepts of Nursing Practice	(9:4:15)
NURS3207	Scholarship for Evidence-based Practice I	(2:2:0)
NURS3227	Nursing Care of the Aging Adult	(2:2:0)
	Total Semester Hours	16

Semester 2		
Number	Course Name	Credits
NURS3801	Concepts of Chronic Care Nursing	(8:4:12)
NURS3404	Pharmacology	(4:2.5:4.5)
NURS3331	Mental Health (4 total Semester	
	NURS3404	
	NURS3404	

Traditional BSN Program Course Descriptions

Traditional Undergraduate BSN courses are delivered via face-to-face, online, or hybrid methodologies.

All pre/co-requisites and any designated conditions/criteria for previous courses apply throughout the curriculum. All general education courses should be completed prior to beginning the nursing curriculum.

KEY:

- Courses are listed in numerical order
- (F) Face-to-face
- (O) Online
- (H) Hybrid (combination of face-to-face and online)
- **(CL)** Concurrent enrollment in a Clinical Section is required
- **(#:#:#)** First # represents the number of credit hours, Second # represents the number of lecture hours per week, third # represents the number of clinical hours per week
- * Elective Courses are offered at select times as faculty and interest are present
- **(V)** Variable Credit

3000 Level Courses

3030. Independent Study in Nursing (V1-6 F or O)

(Prerequisite: Consent of instructor and Department Chair for Undergraduate Traditional Program.) Topic and objectives of study are mutually agreed upon by the student and selected faculty member. Independent study agreement formalizes the plan for study and guides evaluation.

Semester hours and course may be repeated as topic and/or objective of study change.

3040. Special Topics in Nursing (V1-6 F, O)

(Prerequisite: Consent of instructor and Department Chair for Undergraduate Traditional Program) Designed to focus on subjects of special interest to groups of students. May be repeated for credit as topics vary.

3207. Scholarship for Evidence-based Practice I (2:2:0 F)

(Corequisites: NURS 3227, 3307, and 3901) is an introductory course exploring the theory and methods of evidence based practice with emphasis on its role in providing quality patient-centered care in the medical/surgical setting.

3227. Nursing Care of the Aging Adult (CL) (2:2:0 F)

(Corequisites: NURS 3207, 3307, and 3901) An introduction to concepts of aging with a focus on health promotion, access to healthcare, maintenance of functional capacity and physiologic changes. Includes concepts to improve quality of life during common conditions experienced by the aging adult through interprofessional collaboration.

3307. Health Assessment (CL) (3:2:3 F)

(Corequisites: NURS 3207, 3227, and 3901) An introduction to health assessment as a systematic process with emphasis on developing skill in the techniques of assessment and therapeutic communication

across the life span. Includes introductory concepts of data collection, health history, physical examination, use of technology to access and document holistic health assessment and clinical decision making. Performance assessment of skills is required in a laboratory experience.

3317. Perioperative Care

(3:2:3 F)

(*Elective) (Prerequisites: NURS 3307, 3901, 3207, 3227 3801, 3404 and 3331 or the consent of the department chair.) is course will introduce concepts basic to care of the surgical patient. e course will include standards of care, nursing roles, basic instrumentation and types of surgical interventions. Finally the course will integrate the nursing process in the preoperative, intraoperative, and postoperative phases of care.

3318. Oncology

(3:1:6 F)

(*Elective) (Prerequisites: NURS 3307, 3901, 3207, 3227, 3801, 3404 and 3331 or the consent of the department chair.) An introduction to nursing in an oncology setting. Concepts in the course include: patient self-advocacy, empathy versus sympathy, the interdisciplinary team in an oncology setting, current and evolving treatments for cancer, cancer prevention, genetic counseling, and the role of the nurse in cancer patient care. Also included are informatics systems, online resources for cancer patients, and the interpretation of objective and subjective patient data in an oncology setting.

3319. Adult High Acuity Nursing

(3:1:6 F)

(*Elective) (Prerequisites: NURS 3307, 3901, 3207, 3227, 3801, 3404, 3331, 4800, 4306, 4307, 4207 and the consent of the instructor.) is course introduces the concepts of acute care nursing in the intensive care and emergency department settings. In addition, the course provides opportunities for students to explore the concepts of teamwork with patients, families, and health care professionals in a dynamic environment. Basic nursing skills are enhanced as the student uses nursing process to re ne their clinical judgment and patient care skills while caring for acutely ill patients. Preceptors are used to provide students with intensive care and emergency department clinical hours.

3321. Current Concepts of Pharmacology

(3:1.5:4.5 F)

(*Elective) (Prerequisites: NURS 3307, 3901, 3207, 3227, 3801, 3404, 3331 or the consent of the department chair.) is course is designed to enhance the students understanding of pharmacology in relation to routes and safe medication administration. is course will incorporate previous learned knowledge and skills of safe medication administration and implement concepts in clinical/hospital/ simulations setting.

3322. Complex Clinical Concepts

(3:3:0 F)

(*Elective) (Prerequisites: NURS 3901, 3307, 3207, 3227, 3801, 3404, 3331 or the consent of the department chair.) is course is designed to provide opportunities for students to integrate complex clinical concepts with didactic theory. Basic

from sociology, psychology, religion, and medical and nursing sciences as a background for discussing and analyzing therapeutic nursing interventions for care of the terminally ill client. Clinical and experimental techniques will be utilized to promote thought and discussion in order to explore death in its personal, general, and professional significance.

3367. Violence in Families (CL)

(3:2:3 F)

(*Elective) (Prerequisites: NURS 3307, 3901, 3207, 3227, 3801, 3404, and 3331 or the consent of the department chair.) Family violence has multiple, significant consequences for victims and members of families in which violence occurs. Concepts of assessment, intervention, utilization of community resources, and evaluation of violence in families are included.

3368. High Risk Obstetrics in Nursing (CL)

(3:2.5:1.5 F)

(*Elective) (Prerequisites: [NURS 3307, 3901, 3207, 3227, 3801, 3404, 3331 and 4306] or the consent of the department chair.) This course will explore the scope of high risk pregnancy in which the life or health of the mother or fetus is in jeopardy due to complications that are either unique to pregnancy or are due to disorders that coincide with the pregnancy.

3369. Community Mental Health Nursing (3:3:0 F)

(*Elective) (Prerequisites: NURS 3307, 3901, 3207, 3227, 3801, 3404, and 3331 or the consent of the department chair.) A study of mental illness in the community for beginning nursing practice. Emphasis

on transition of psychiatric-mental health nursing into the community-based mental health care system. Major areas addressed are political and economic perspectives, client advocacy, roles and responsibilities of psychiatric nurses in the community, community-based mental health services, and at-risk populations.

3371. Legal and Ethical Issues in Healthcare

(3:3:0 F)

(*Elective) (Prerequisites: NURS 3307, 3901, 3207, 3227, 3801, 3404, and 3311 or the consent of the department chair.) An interdisciplinary course surveying major legal and ethical issues in the delivery of healthcare.

3374. Philosophical Issues and Problems in Human Caring

(3:3:0 F)

(*Elective) (Prerequisites: NURS 3307, 3901, 3207, 3227, 3801, 3404, and 3331 or the consent of the department chair.) Exploration of different avenues of approaching philosophical dilemmas in providing care to clients whose behaviors and value systems are difficult to accept. Examines select issues from the standpoints of philosophy and nursing.

3403. Critical Care in Pediatric Nursing (3:3:0 F)

(*Elective)

(Prerequisites: NURS 3307, 3901, 3207, 3227, 3801, 3404, 3331, 3.1(d, 4306, 0 F))Tj23(y a)9(n4307)

age and development. Additionally, students will demonstrate ability to reason clinically/ use critical thinking by applying evidence based practice in both simulation and

4306. Nursing Care of the Childbearing Family (CL)**(3:2:3 F)**

(Prerequisites: NURS 3307, 3901, 3207, 3227, 3801, 3404, and 3331) (Corequisites: NURS 4206, 4307, 4800) Encompasses concepts related to the safe delivery of quality nursing care to childbearing families. Focuses on application of the nursing process of the childbearing family unit. Special emphasis is placed upon communication within an interdisciplinary team, patient safety including principles of infection control, quality improvement, evidenced based nursing care related to traditional and alternative birth processes,

to apply concepts related to interprofessional teamwork, informatics and patient-centered care.

4800. Concepts of Acute Care Nursing (CL)

(8:3:15 F)

(Prerequisites: NURS 3307, 3901, 3207, 3227, 3801, 3404 and 3331) (Corequisites: NURS 4206, 4306 and 4307) This course emphasizes acute care nursing concepts essential for professional nursing practice in complex adult medical/surgical environments. Advanced clinical judgment, reasoning and therapeutic nursing skills are demonstrated in the application of evidence based nursing care through the use of a case study analysis with increasing complexities and critical thinking activities. The focus is on complex disease management including environmental factors, genetic risks, and preventive care using a collaborative approach.

Non-Traditional Undergraduate Department

Second Degree BSN Program

*Melinda Mitchell Jones, MSN, JD, RN,
Department Chair*

*Laura Opton, DHSc, RN, CNE
Program Director*

Second Degree BSN (Applicants who do not currently have a RN license)

Texas Tech University Health Sciences
Center School of Nursing offers an
accelerated second-degree web-based

medical terminology course (certificate or transcript should be provided as documentation of completion).

- Complete the TEAS standardized exam at a proficient level or higher. The TEAS V exam can be taken no more than two (2) times per application cycle. If two attempts are made, the scores will

the NCLEX examination. The Declaratory Order permits the BON to make decisions regarding a petitioner's eligibility for licensure prior to entering or completing a nursing program. The petition should be completed as soon as possible. The review process can take a minimum of three (3) months but could be longer depending on the issue and volume of applications. Students who have obtained a Declaratory Order Petition must notify and inform the Non-Traditional Department Chair of the outcome. If a student answers yes to one of the following questions, a Petition for Declaratory Order must be completed.

- For any criminal offense, including those pending appeal, have you:
 - Been convicted of a misdemeanor?
 - Been convicted of a felony?
 - Pled nolo contendere, no contest, or guilty?
 - Received deferred adjudication?
 - Been placed on community supervision or court-ordered probation, whether or not adjudicated guilty?
 - Been sentenced to serve jail or prison time? court-ordered confinement?
 - Been granted pre-trial diversion?
 - Been arrested or have any pending criminal charges?
 - Been cited or charged with any violation of the law?
 - Been subject of a court-martial; Article 15 violation; or received any form of military judgment/punishment/action?

(You may only exclude Class C misdemeanor traffic violations.)

- Are you currently the target or subject of a grand jury or governmental agency investigation?
- Has any licensing authority refused to issue you a license or ever revoked, annulled, cancelled, accepted surrender of, suspended, placed on probation, refused to renew a license, certificate or multi-state privilege held by you now or previously, or ever fined, censured, reprimanded or otherwise disciplined you?
- Within the past five (5) years, have you been addicted to and/or treated for the use of alcohol or any other drug?
- Within the past five (5) years have you been diagnosed with, treated, or hospitalized for schizophrenia and/or psychotic disorders, bipolar disorder, paranoid personality disorder, antisocial personality disorder, or borderline personality disorder?

*Pursuant to Occupations Code §301.207, information regarding a person's diagnosis or treatment for a physical condition, mental condition, or chemical dependency is confidential to the same extent that information collected as part of an investigation is confidential under the Occupations Code §301.466. You may indicate "NO" if you have completed and/or are in compliance with Texas Peer Assistance Program for Nurses (TPAPN) for substance abuse or mental illness.

NOTE: Expunged and Sealed Offenses: While expunged or sealed offenses, arrests, tickets, or citations need not be disclosed, you are responsible for ensuring the offense, arrest, ticket or citation has, in fact, been expunged or sealed. Submission of a copy

of the Court Order expunging or sealing the record in question to the Texas Board of Nursing is recommended. Failure to reveal an offense, arrest, ticket, or citation that is not in fact expunged or sealed, will at a minimum, subject your license to a disciplinary fine. Non-disclosure of relevant offenses raises questions related to truthfulness and character.

NOTE: Orders of Non-Disclosure:

Pursuant to Texas Government Code § [552.142\(b\)](#), if you have criminal matters subject to an order of non-disclosure, you are not required to reveal those criminal matters on the declaratory order form. However, a criminal matter subject to an order of non-disclosure may become a character and fitness issue. Pursuant to other sections of the Government Code [Chapter 411](#), the Texas Board of Nursing is entitled to access criminal history record information subject to an order of non-disclosure, even if you properly did not reveal that matter, the Board may require you to provide information about any conduct that raises issues of character.

Statutes and Rules governing the Petition for Declaratory Order may be found in the Texas Occupations Code §§ [301.257](#), [301.452-304.454](#) ([Nursing Practice Act](#)), and in the Board Rules and Regulations relating to Nurse Education, Licensure and Practice, Texas Administrative Code (TAC) Title 22 Examining Boards §§ [213.27-30](#) and §§ [217.11-12](#). These statutes and rules can be located on the BON's website www.bon.state.tx.us.

The Nurse Practice Act (<http://www.bon.texas.gov/nursinglaw/npa.html>) was

amended during the 2005 Texas legislative session, adding Texas Occupations Code § [301.4535](#), to authorize the Board of Nursing to deny or revoke licensure to an individual for certain criminal offenses. Under the provision, the BON shall refuse or withdraw a license if the person has been convicted of an identified offense or has noted on his or her criminal record a plea of guilty or nolo contendere. The Texas Board of Nursing (037tropations:6.IT1011) wahce.9(h).1()6(es a)9(n)4.1(d r)-1.9(p

of higher education while classified as a resident student for tuition purposes that exceeds by at least 30 hours the number of semester credit hours required for completion of the degree program in which the student is enrolled. For purposes of this subsection, an undergraduate student who is not enrolled in a degree program is considered to be enrolled in a degree program or programs requiring a minimum of 120 semester credit hours, including minors and double majors, and for completion of any certificate or other special program in which the student is also enrolled, including a program with a study-abroad component. An institution of higher education that charges students tuition at a higher rate under this subsection may adopt a policy under which the institution exempts from the payment of that higher rate a student that is subject to the payment of the higher rate solely as a result of hardship as determined by the institution under the policy.”

Students who were enrolled as an undergraduate student in any institution of higher education prior to Fall 1999 are exempt from this rule. Also, students enrolled as undergraduate students prior to Fall 2006 may not be charged a higher rate of tuition until the number of semester hours previously attempted exceeds the number of hours required for the student’s degree program by 45 hours.

Computer Requirements

See Computer Requirements on page 33.

Criminal Background Checks

A Criminal Background Check (CBC) must be completed prior to enrollment at

TTUHSC School of Nursing in compliance with [TTUHSC OP 10.20](#). Each student is responsible for the cost of his/her CBC and any additional fees.

Second Degree BSN students will complete the Criminal Background Check process through the Texas Board of Nursing. Instructions on the process for complying with this requirement will be sent to all new incoming students in the orientation information. This is in accordance with [SON OP 30.312](#). No student will be allowed to matriculate into their respective program without a cleared criminal background check or Declaratory Order with no stipulations.

The following searches are required for students pursuing clinical training through TTUHSC:

- Criminal History Record Information Search (including all residences for the last seven years);
- Social Security Number Trace (residential history, state and year SSN issued);
- Sex Offender Registry;
- Office of Inspector General Sanction Report;
- General Services Administration Excluded List;
- Office of Foreign Asset Control; and
- Texas State Exclusion List.

Additional background checks are required after a break in enrollment in accordance with [TTUHSC OP 10.20](#).

Immunizations

See Immunization Requirements on page 34.

Drug Screening

Drug Screenings may be required if requested by the clinical institution site at the cost of the student.

Enrollment without Credit/Course Audit

Students wanting to audit a course for no grade must obtain approval from the Non-Traditional Undergraduate Department Chair. Students auditing a course will not be listed on the official class roll, and no notation of the audit will be made on the student's transcript. Students enrolled for 12 or more semester credit hours may audit a course without paying an additional fee. All other students must pay a \$10 fee for auditing a course.

Provisional Admission

Provisional admission is not available for the

- readmission applicants,
• Not eligible.

The NTUG Council may assign requirements to be met as a condition of enrollment, i.e. readmission on a part-time degree plan.

PRE-REQUISITE COURSES and REQUIREMENTS

The pre-requisite course requirements listed below should be completed with a grade of “C” or higher in each course prior to enrollment in the first nursing course.

These requirements as detailed in the table below include a total of 55 semester credit hours and can be taken at any regionally accredited college or university. A maximum of 15 credit hours can be earned via credit by examination.

The prerequisite courses listed in the following table for the Second Degree BSN Program also incorporates the 42 hours of the Texas Tech University Health Sciences Center Core Curriculum for undergraduate nursing degrees. Please see Core Curriculum Requirements on page 28 to review the Texas Core Curriculum requirements.

Important Information about Pre-Requisite Course Requirements

- Pass/Fail grades are not accepted for credit toward degree requirements.
- Applicants may choose to request grades for all non-nursing courses greater than 10 years old not be considered in the GPA for admission. If this option is selected, the credits excluded are not eligible for pre-requisite course consideration and must be retaken for

credit. The applicant must have at least 34 credit hours within the past 10 years to use this option.

- Grades earned at all schools attended are calculated in the admission grade point average. The quality points and semester credit hours used to calculate the cumulative grade point average for admission to the School of Nursing are taken from the official transcripts submitted during the application process.

The School of Nursing accepts courses completed via classroom, internet, correspondence, CLEP (College Level Examination Program), or advanced placement examination for which credit with the grade of “C” or higher has been awarded and posted on an official transcript from an accredited college or university when determining completion of pre-requisite non-nursing course requirements.

Second Bachelor’s Degree

No second bachelor’s degree is conferred until the candidate has completed at least 24 semester hours—exclusive of credit by examination—in addition to the courses counted toward the first bachelor’s degree. A second bachelor’s degree sought by a student who did not complete the core curriculum at a public Texas institution of higher education must include the Texas Tech University Health Sciences Center required core curriculum.



**RECOGNITION OF PREVIOUS
NURSING LEARNING*****Transfer of Credit***

Applicants are encouraged to meet with the School of Nursing Non-Traditional Undergraduate Department Chair or the Second Degree Program Director to discuss applicability of transfer credit for degree purposes.

OFFER OF ADMISSION

Offers of admission will be made

Residence Credit

The minimum actual residence credit required of each undergraduate student is 30 hours at TTUHSC, including the final 15 hours in nursing courses taken for a grade. The remaining hours may include transfer credit and correspondence course work. Residence credit as used here means credit for work done in

Sample Degree Plan - Second Degree BSN Program

Semester 1		
Number	Course Name	Credits
NURS3205	CL, Clinical Competence I: Practicum in Basic Skills for Nursing Practice	(2:0:6)
NURS3380	Foundational Concepts of Nursing Practice	(3:3:0)
NURS3510	CL, Clinical Foundations of Nursing Practice	(5:0:15)
NURS3307	Health Assessment	(3:2:3)
NURS3408	Pharmacology	(4:4:0)
NURS3315	Developing Family Nursing	(3:3:0)
NURS3105	CL, Practicum in Obstetrical Nursing Care and Developing Families	(1:0:3)
Total Semester Hours		21

Semester 2		
Number	Course Name	Credits
NURS3385	Concepts of Chronic Care Nursing	(3:3:0)
NURS3520	CL, Chronic Care Nursing Clinical	(5:0:15)
NURS4312	Child Health Nursing	(3:3:0)
NURS4314	Mental Health Nursing	(3:3:0)
NURS4214	Research	(2:2:0)
NURS4112	CL, Practicum in Pediatric Nursing	(1:0:3)
NURS4114	CL, Practicum in Mental Health Nursing	(1:0:3)
Total Semester Hours		18

Semester 3		
Number	Course Name	Credits
NURS4316	Health Promotion and Education	(3:3:0)
NURS4317	CL, Community and Population Health Nursing	(3:2:3)
NURS4318	Management and Leadership in Nursing	(3:3:0)
NURS4398	Concepts of Acute Care Nursing	(3:3:0)
NURS4510	CL, Acute Care Nursing Clinical	(5:0:15)
NURS4219	CL, Clinical Competence II: Practicum in Integration of Nursing	(2:0:6)
NURS4310	CL, Synthesis of Nursing Knowledge	(3:2:3)
Total Semester Hours		22

Total Credit Hours		61
---------------------------	--	-----------

Second Degree BSN Program Course Descriptions

Undergraduate courses are delivered via face-to-face, online, or hybrid methodologies.

will be required in the application of evidence-based nursing care in case studies.

3380. Foundational Concepts of Nursing Practice

(3:3:0 O)

(Pre-requisite: NURS 3205; Co-requisites: NURS 3105, 3307, 3408, 3315, 3510.)

This course is an introduction to nursing as a systematic process with emphasis on the knowledge, skills and values core to evidence-based professional nursing utilizing a framework of clinical judgment and decision-making coupled with a management systems approach of macro/micro systems. Emphasis is on human functioning, human diversity and responses to health and illness.

3385. Concepts of Chronic Care Nursing

(3:3:0 O)

(Pre-requisite: Satisfactory completion of all first semester courses; Co-requisites: NURS 4112, 4114, 4312, 4314, 4214, 3520.)

This course emphasizes chronic care nursing concepts essential for professional nursing practice in a variety of settings. Special focus is on the concepts of aging, health promotion, disease prevention, and genetics as well as illness management. Clinical judgment and reasoning and the integration of therapeutic nursing skills will be demonstrated through case study analysis and critical thinking activities.

3408. Pharmacology

(4:4:0 O)

(Co-requisites: NURS 3205, 3380, 3510, 3307, 3315, 3105) This course introduces principles of pharmacology and drug therapy, classifications of drugs, and nursing implications of pharmacotherapeutics.

Legal, ethical, genetic, cultural, and life span implications of drug therapy are explored. Evidence-based practice guides students to use critical thinking when addressing expected effects/outcomes of medications, medication safety, routes of administration, dosage calculations, and documentation.

3510. Clinical Foundations of Nursing Practice (CL)

(5:0:15 H)

(Pre-requisite: NURS 3205; Co-requisites: NURS 3105, 3307, 3408, 3315, 3380.)

This course provides students with the opportunity to demonstrate foundational professional nursing skills through clinical and simulated nursing activities for patients experiencing common health problems in a variety of health care settings.

3520. Chronic Care Nursing Clinical (CL 5:0:15 H)

(Pre-requisite: Satisfactory completion of all first semester courses; Co-requisites: NURS 4112, 4114, 4312, 4314, 4214, 3385.) This course provides students with the opportunity to demonstrate chronic care nursing skills through clinical and simulated nursing activities for patients experiencing common health problems in a variety of health care settings.

4000 Level Courses

4112. Practicum in Pediatric Nursing (CL)

(1:0:3 H)

(Pre-requisite: Satisfactory completion of all first semester courses; Co-requisite: All second semester courses.) This clinical laboratory experience provides opportunities to care for children, families, groups and communities in pediatric settings using evidence-based knowledge from the theory courses.

4114. Practicum in Mental Health Nursing (CL)

(1:0:3 H)

(Pre-requisite: Satisfactory completion of all first semester courses; Co-requisite: All second semester courses.) This clinical course provides opportunities for students to plan and provide holistic care for patients in mental health settings using evidence based knowledge.

human mental health in altered states from adaptation through dysfunction to pathological processes. The focus is on approaches to promote mental health/optimal function in the care of patients, groups, and families experiencing altered states of mental health using evidence-based standards of care.

**4316. Health Promotion and Education
(3:3:0 O)**

(Pre-requisite: Satisfactory completion of all first and second semester courses; Corequisite: NURS 4317, 4318, 4398, 4510, 4310.) This course incorporates health promotion and disease prevention concepts for assessment and intervention with clients across the lifespan. Emphasis is placed on health education planning and teaching plans for patients, families, populations, and communities.

**4317. Community and Population Health
Nursing (CL)
(3:2:3 H)**

(Pre-requisite: Satisfactory completion of all first and second semester courses; Corequisite: NURS 4316, 4318, 4398, 4510, 4219, 4310.) This course emphasizes population-focused nursing and

**4510. Acute Care Nursing Clinical (CL)
(5:0:15 H)**

(Pre-requisite: Satisfactory completion of all first and second semester courses; Co-requisites: NURS 4316, 4317, 4318, 4398, 4219, 4310.) This course provides opportunities for students to synthesize generalist nursing roles of provider and manager of nursing care, in clinical and simulated acute care settings. Clinical judgment and reasoning and therapeutic nursing skills necessary in the acute care delivery are demonstrated in the application of evidence-based nursing care through simulated case studies and weekly clinical experiences.

RN to BSN Program

**Melinda Mitchell Jones, MSN, JD, RN,
Department Chair**

**Darlene Lacy, PhD, RN, CNE
Program Director**

RN to BSN (Licensed RN Students)

Web-based technology is used to provide course delivery for this totally on-line learning program. A concerted effort is made to individualize the program to meet the needs of the learners and classes are exclusively designed for the registered nurse. Students can complete the RN to BSN Program in two semesters, with admission in the fall, spring, or summer semesters. If a student elects to attend part-time, the student must complete the program in two years from the time of initial enrollment.

ADMISSIONS REQUIREMENTS

All RN to BSN applicants are required to:

- Submit a completed application and non-refundable application fee of \$40 to the [TTUHSC Merlin](#) application system for admission to the School of Nursing.
 - Submit official transcripts from all institutions in which the student has enrolled.
 - Complete general education requirements and Texas Core Curriculum prior to enrollment.
 - A 2.5 or higher cumulative grade point average in both the general education prerequisites and nursing courses is required for admission consideration. All general education prerequisite and nursing courses should be completed with a grade of “C” or higher prior to enrollment with a record of successful completion and showing limited
-

states: "An institution of higher education may charge a resident undergraduate

Drug Screening

Drug Screenings may be required if requested by the clinical institution site at the cost of the student.

Immunizations

See Immunization Requirements on page 34.

Enrollment without Credit/Course Audit

Students wanting to audit a course for no grade must obtain approval from the Non-Traditional Undergraduate Department Chair. Students auditing a course will not be listed on the official class roll, and no notation of the audit will be made on the student's transcript. Students enrolled for 12 or more semester credit hours may audit a course without paying an additional fee. All other students must pay a \$10 fee for auditing a course.

Provisional Admission

Provisional admission will only be granted to those students who have graduated from ADN schools who TTUHSC School of Nursing have current concurrent admissions agreements and who have submitted the form giving notice of an Intent to Seek Concurrent Admission at the start of their ADN program. These designations are noted in the letter of admission, along with the condition for removal of the provision. Provisionally admitted students may take one course, NURS 4381 Issues and Trends in Nursing. Once the student presents evidence of licensure as a registered nurse per admission guidelines, the student will be granted full admission to the RN-BSN Program. If a student is unsuccessful in passing the NCLEX, a leave of absence for one semester will be granted. If the student

has not been licensed during the leave of absence, the student will be academically withdrawn and encouraged to reapply upon passage of the NCLEX.

Conditional Admission

RN to BSN candidates may be offered conditional admission if they have not met the following requirements for full admission:

- Nursing degree completion confirmation (student graduating in current semester and verification is not available until the end of the semester)
- Pre-requisite courses have not been completed prior to the deadline for application for admission for the semester to which the student is applying.

The student with conditional admission is required to comply with the conditions stated in the letter of admission offer prior to the first day of class for the semester to which the student has applied. Failing to do so will result in retraction of the offer.

Note: If a student is offered both provisional and conditional admission, the terms of conditional admission govern at the time of the first class day.

Readmission

All requests for readmission must be made no later than two months prior to the first day of the semester in which readmission is requested. The Non-Traditional Undergraduate (NTUG) Council is responsible for overseeing requests for all readmissions to the RN to BSN Program. A student who leaves in good standing and is seeking readmission must complete

and submit an readmission application showing the expected entry point to a Student Affairs Coordinator. The Student Affairs Coordinator will notify the Chair of the NTUG Council of the request for readmission along with providing the most current transcript, and a summary of the circumstances of the student's withdrawal, if known. A student who leaves with a record not in good standing because of withdrawal for academic or disciplinary causes must complete and submit a readmission application to the Student Affairs Coordinator along with a letter explaining the circumstances resulting in the withdrawal and the plan to improve or correct performance, if offered readmission. The Student Affairs Coordinator will forward the application, the letter, and any available academic records including the most recent transcript to the Chair of the NTUG Council. At the next scheduled meeting, the NTUG Council shall review all such requests and may take one of the following actions regarding readmission of a student:

- Eligible and admit,
- Eligible pending space available in nursing courses and in sequence to date of action in relation to other readmission applicants,
- Not eligible.

The NTUG Council may assign requirements to be met as a condition of enrollment, i.e. readmission on a part-time degree plan.

Transfer Student

Students requesting admission to the RN to BSN Program as a transfer student from another university must meet the following criteria:

- Must be eligible to return to the institution from which the student is requesting transfer,
- Student previously enrolled in the RN-BSN Program at TTUHSC School of Nursing who has attended another institution of higher education and is seeking to return must apply for admission and will be required to meet the SON pre-requisites for admission and the TTUHSC standards for transfer credit,
- Number of credits completed at TTUHSC to receive a degree must total 25% of the total 120 credits required by the State of Texas to award a bachelor's degree

PRE-REQUISITE COURSES and REQUIREMENTS

The pre-requisite course requirements listed below should be completed with a grade of "C" or higher in each course prior to enrollment in the first nursing course.

These requirements as detailed in the table below include a total of 52 semester credit hours and can be taken at any regionally accredited college or university. A maximum of 15 credit hours can be earned via credit by examination.

The prerequisite courses listed in the following table for the RN to BSN Program also incorporates the 42 hours of the Texas Tech University Health Sciences Center Core Curriculum for undergraduate nursing degrees. Please see Core Curriculum Requirements on page 28 to review the Texas Core Curriculum requirements.

determination regarding applicability of completed course work toward degree requirements lies with the Non-Traditional Undergraduate Department Chair.

- Course equivalencies for transfer credit are assessed based upon the catalog course description or the course syllabus and/or notes provided by the student. Generally, courses of equivalent content completed with the grade of “C” or higher at any accredited educational institution will be accepted for transfer credit toward degree requirements.
- The School of Nursing accepts courses completed via classroom, internet, correspondence, College Level Examination Program (CLEP) or advanced placement examination for which credit has been awarded and posted on an official transcript from an accredited college or university when determining completion of general education course requirements.
- No more than 52 general education course hours will be transferred, as well as a minimum of 38 hours of basic nursing education program courses be posted, for a total of 90 semester hours acknowledged as meeting the RN-BSN degree requirements. (If a basic nursing program has less than 38 hours, details for meeting the requirements should be arranged with the Non-Traditional Undergraduate Department Chair. Transfer credit hours are posted upon admission to the School of Nursing by the TTUHSC Registrar’s office, thus the RN-BSN student will be classified as a Senior student upon entering TTUHSC SON.
- Applicants are encouraged to meet with

or send transcripts to (fax is acceptable) the Office of Student Affairs Coordinator to discuss applicability of transfer credit for degree purposes before submitting the application.

Advanced Placement

- Students who have completed courses in nursing are eligible to receive advanced placement. Advanced placement credit may be awarded for credit earned at an agency that is not part of an institution of higher education, such as a diploma nursing school.

OFFER OF ADMISSION

Offers of admission will be made approximately six to eight weeks following the application deadline. Due to the limited number of positions available each semester, applicants should respond to the offer of admission no later than the deadline stated in the letter offering admission by returning a \$100 non-refundable placement guarantee fee. Failure to respond by the deadline results in withdrawal of the offer of admission.

DEGREE REQUIREMENTS FOR STUDENTS ADMITTED TO PROGRAM

Graduation under a Particular Catalog

A student is expected to complete the degree requirements set forth in the School of Nursing Catalog in effect at the time the student enters the chosen area of study. Only with the specific approval of the Non-Traditional Undergraduate Department Chair may a different Catalog be selected. Students, in all cases are prohibited from completing the requirements set forth in a catalog more than seven years old. The Catalog is published at least biennially

and its provisions are applicable during the following academic year (September 1 through August 31). However, a student registering for the first time at TTUHSC during a summer semester is subject to the degree requirements set forth in the Catalog effective for the fall semester immediately following that summer semester.

Maintaining Minimum Academic Requirements

- Maintain a 2.0 GPA for each semester and overall cumulative
-

DEGREE PLAN

The following degree plan is provided as a sample degree plan for reference. This degree plan is designed for applicants with a RN license only. The information is provided here only as an overview of a basic course schedule of a full-time student and will vary depending on each student's ability to progress through the program. Degree plans are generally completed by the RN to BSN Program Coordinator during the initial advising session with the

student. The degree plan may be revised based on a student's ability to successfully progress through the curriculum. When necessary, methods for limiting enrollment will be determined by the Non-Traditional Undergraduate Department Chair. All general education courses must be completed prior to enrollment. Students should discuss an appropriate academic and employment workload with the Non-Traditional Undergraduate Department Chair.

Sample Degree Plan - RN to BSN Program

Semester 1		
Number	Course Name	Credits
NURS4373	Introduction of Evidence	(3:3:0)
NURS4381	Issues and Trends in Nursing	(3:3:0)
NURS4380	Nature of Nursing Theory	(3:3:0)
NURS4374	CL, Nursing Management and Leadership	(3:2.5:0.5)
NURS4383	CL, Legal and Ethical Issues in Healthcare	(3:2.5:0.5)
Total Semester Hours		15

Semester 2		
Number	Course Name	Credits
NURS4376	CL, Population Focused Community Health	(3:2.5:0.5)
NURS4377	CL, Risk Analysis and Implications for Practice	(3:2.5:0.5)
NURS4375	Information Systems and Quality Management	(3:3:0)
	Elective	(3:3:0)
NURS4390	Baccalaureate Nursing Practice	(3:3:0)
Total Semester Hours		15

Total Credit Hours		30
---------------------------	--	-----------

RN to BSN Program Course Descriptions

Undergraduate courses are delivered via face-to-face, online, or hybrid methodologies.

All pre/co-requisites and any designated conditions/criteria for previous courses apply throughout the curriculum. All general education courses should be completed prior to beginning the nursing curriculum.

KEY:

- Courses are listed in numerical order
- (F) Face-to-face
- (O) Online
- (H) Hybrid (combination of face-to-face and online)
- **(CL)** Concurrent enrollment in a Clinical Section is required
- **(#:#:#)** First # represents the number of credit hours, Second # represents the number of lecture hours per week, Third # represents the number of clinical hours per week
- * Elective Courses are offered at select times as faculty and interest are present
- **(V)** Variable Credit

3000 Level Course

3365. Introduction and Exploration into the Multiple Aspects of Forensic Science (3:3:0 F)

(*Elective) Forensic science has multiple, significant procedures and guidelines which contribute to the medico legal analysis in the criminal justice system. It also provides support and treatment for victims and family members. Multiple disciplines, such as nursing, medicine, law, psychology, and

the sciences necessary to make forensic science operate, will be explored. Content to be addressed includes assessment, intervention, and utilization of community resources; legal issues; and evaluation of forensic evidence. The course will give the student a general understanding and appreciation of forensic sciences.

4000 Level Courses

4308. Global Health Issues in Nursing (3:3:0 O)

(*Elective) In order to provide competent care for diverse populations, it is important for nurses to have an awareness of global health issues. This course will provide an introduction to global health issues affecting nurses. The student will be exposed to a variety of global issues; including infectious diseases, non-infectious diseases, and non-disease related global issues that impact healthcare in developing and developed countries.

4309. Community-Based Self-Management of Chronic Disease (3:3:0 O)

(*Elective) This course provides the student with current information on the incidence and prevalence of chronic disease, development of cultural competence, behavioral change theories, and program planning models. Students will use the knowledge gained to guide their design of an effective intervention aimed at enhancing self-management of chronic disease in the community. Students will synthesize this information in the creation of a selfmanagement intervention designed to improve the health of those with chronic disease.

4311. Elective Care Coordination for Seniors**(3:3:0 O)**

(*Elective) This course will explore the role of the nurse in care coordination for seniors. Systems of care needed to make care safer, ensure patient/family engagement and promote effective communication/coordination will be discussed in relation to care for seniors.

4331. Human Lactation**(3:3:0 O)**

(*Elective) This course will examine the biological, environmental, sociological, and political factors in influencing human lactation. Evidence based guidelines will be discussed in relation to current nursing practice. Field experiences will be required to provide students opportunities to investigate resources within their own communities and to further analyze the unique experience of a lactating mother and her breastfed child.

4362. Health Care for Rural Older Adults**(3:3:0 O)**

(*Elective) Focus on important concepts in health and health care among rural elders as a population group. The concept of rurality will be presented not as a dichotomy, but as continuum, focusing on the special needs of rural elders. Emphasis is on the collaborative role of nurses in assisting elders and families in rural settings to negotiate health care delivery systems, using principles for evaluating, managing, and coordinating care of rural elders.

4363. Foundations of Holistic Nursing**(3:3:0 O)**

(*Elective) Students will explore various perspectives related to health and healing processes, including concepts of self care, presence, intentionality, and integrative modalities as a basis for holistic nursing practice. Contemporary research supporting evidence based holistic practice is highlighted.

4364. Informatics in Nursing Practice**(3:3:0 O)**

(*Elective) Students will explore the various uses of informatics in nursing practice and the healthcare setting including current technology initiatives, use of informatics in a variety of healthcare settings, decision support systems, and the impact of technology on nurse-patient relationships.

4365. Spirituality in Health Practice and Evidence Based Practice**(3:3:0 O)**

(*Elective) This course is an exploration of spirituality in health care. Included in this course is an overview of different aspects related to spirituality and an exploration into avenues to strengthen the inclusion of spirituality in health care delivery with a focus on the evidence-based practice foundation for these avenues.

4366. Genomics in Nursing Practice**(3:3:0 O)**

(*Elective) This course will increase the ability of the professional nurse to think genetically when approaching a clinical situation or problem that may not appear to be genetic in nature. The course will examine basic mechanisms of inheritance and transmission of chromosomes

care coordination and quality management. Learning information systems and quality management concepts will prepare the student to function as a nursing leader in a variety of healthcare settings. Content will cover strategies to improve communication and manage information using technology to support decision making to improve patient care and delivery systems.

4376. Population Focused Community Health (CL)

(3:2.5:0.5 O)

(Pre-requisite: Completion of NURS 4373 or 4382, 4380, 4381) This course emphasizes population-focused nursing and community-oriented approaches to understanding and addressing public health concerns. The focus is on the concepts of population health assessment, planning, implementation, and evaluation of programs to improve community health.

4377. Rems8TfaezH, p 9(li)12(y10(i)8(g(n)45(nd I)5(im8(u)-3(v)8-2(h (o)(t)5(i)-6(o)10(n F)17so)-1415.9(d

phe c9(t)-5(i e p)1pe sanninropulation h

**4390. Baccalaureate Nursing Practice
(3:3:0 O)**

(Pre-requisite: Completion of NURS
4374, 4375, 4380, 4381, 4373, 4383, 4377)

(Co-requisite: NURS 4376 and 4381) A
capstone course which requires students to
integrate principles of patient centered care,
interdisciplinary teams, evidence-based
practice, quality improvement, informatics,
and patient safety through discussion,
personal reflection, and development of a
professional portfolio.

Graduate Department

Barbara Cherry, DNSc, MBA, RN, NEA-BC
Department Chair, Leadership Program

Emily Merrill, PhD, RN, FNP, BC, CNE, FAANP
Department Chair, MSN Advanced Practice Registered Nurse (APRN) Program

Tara Hilliard, MSN, RN, ACNP-BC
Program Director, Adult-Gerontology Acute Care NP Track

Kellie Bruce, PhD, RN, FNP-BC
Program Director, FNP Track

Christine Stuart, MSN, CNM, WHNP-BC
Director of the Nurse Midwifery Program

Karen Esquibel, PhD, RN, CPNP-PC
Program Director, Pediatric NP (Primary and Acute Care) Tracks

Pat Allen, EdD, RN, CNE, ANEF, FAAN
Program Director, MSN Nursing Education Track

McBride, Susan, PhD, RN
Director of the MSN Nursing Informatics Program

Introduction

The School of Nursing Graduate Department offers the Master of Science in Nursing (MSN) program and the Doctor of Nursing Practice (DNP) program. The MSN program has the following tracks: Nursing Administration, Nursing Education, Nursing Informatics, Family Nurse Practitioner, Pediatric Primary Care Nurse Practitioner, Pediatric Acute Care Nurse

MSN and Post Master's Application



experience within the last five (5) years prior to admission.

- Applicants to the NMW track must possess current EFM proficiency taken/updated within the last 5 years.
- Experience in nursing informatics or information technology is preferred for applicants to the Nursing Informatics track.

one (1) year of RN experience in acute care, intensive care, or an emergency department setting within the past five (5) years.

- Applicants to the Pediatric Primary and Acute Care Nurse Practitioner (PNP) tracks are required to have two (2) years of RN experience in pediatrics prior to admission.

Admission Requirements - Post Master's Certificate

- Valid Texas or Compact RN License
- Master of Science in Nursing degree from a regionally accredited college or university with nursing program accreditation from the Commission on Collegiate Nursing Education (CCNE)
- Minimum 3.0 GPA or better (on a 4.0 scale)
- ACLS/PALS certification (FNP, PNP, AGACNP)
- NRP (Neonatal resuscitation program) and course in EFM (electronic fetal monitoring) (NMW)
- Personal Goals Essay
- Letters of Reference (3)
- Completed Merlin supplemental application, <http://www.ttuhschool.edu/merlin>, and appropriate documentation, i.e. TOEFL score
- Official transcript for the MSN degree
Note: All transcripts must be from a regionally accredited college or university with nursing program accreditation from the Commission on Collegiate Nursing Education (CCNE) or from the National Accrediting Commission (NLNAC)
- Applicants to the Adult Gerontology Acute Care Nurse Practitioner (AGACNP) track must have at least

- Evidence of leadership in nursing
- Work experience
- Diversity of experience such as study abroad, knowledge of other cultures, proficiency in other languages
- Military service
- Permanent resident of TTUHSC service area
- First generation college student
- Bilingual
- Socioeconomic status

All applicants will be reviewed in an individual and holistic manner. No single factor will determine a student's admission. Only complete applications are reviewed for admission consideration.

Computer Requirements

See Computer Requirements on page 33.

Criminal Background Checks

A Criminal Background Check (CBC) must be completed prior to enrollment at TTUHSC School of Nursing in compliance with TTUHSC OP 10.20, <http://www.ttuhs.edu/hsc/op/op10/op1020.pdf>. Each student is responsible for the cost of his/her CBC and any additional fees.

Graduate students will complete the Hire Right Criminal Background Check process. Information will be provided to new students with orientation information.

The following searches are required for students pursuing clinical training through TTUHSC:

- Criminal History Record Information Search (including all residences for the last seven years);
- Social Security Number Trace

(residential history, state and year SSN issued);

- Sex Offender Registry;
- Office of Inspector General Sanction Report;
- General Services Administration Excluded List;
- Office of Foreign Asset Control; and
- Texas State Exclusion List.

Additional background checks are required after a break in enrollment in accordance with TTUHSC OP 10.20 <http://www.ttuhs.edu/hsc/op/op10/op1020.pdf>.

If an applicant believes the record is in error and gives written notification to the School of his/her intent to challenge the report, matriculation will be put on hold pending the outcome of the challenge. Should the applicant fail to notify the School of his/her intent to challenge or it is determined that the record is accurate at the conclusion of a vendor challenge by an applicant; the admission offer will be withdrawn.

NOTE: Expunged and Sealed Offenses

While expunged or sealed offenses, arrests, tickets, or citations need not be disclosed, it is your responsibility to ensure the offense, arrest, ticket or citation has, in fact, been expunged or sealed. It is recommended that you submit a copy of the Court Order expunging or sealing the record in question to our office with your application. Failure to reveal an offense, arrest, ticket, or citation that is not in fact expunged or sealed, will at a minimum, subject your license to a disciplinary fine. Non-disclosure of relevant offenses raises questions related to truthfulness and character.

- good academic standing;
- Registered nurse with a BSN not enrolled in an educational institution; or
- Waiver to the above requirement from the applicable Graduate Department Chair.

In addition to meeting admission criteria, consideration to non-degree seeking students is given on a space available basis.

A complete Special Student (non-degree) application includes the following:

- Submitted special-student application
- Submitted signature page
- Submitted Oath of Residency
- Submitted Basic Life Support (BLS) certification

Special students can take a maximum of six (6) credit hours. A special student wishing to apply for full admission to one of the Graduate Department programs must submit the full application according to the stated deadlines and will be considered for admission with the entire pool of applicants for the time period the application is submitted.

Enrollment without Credit/Course Audit

Students wanting to audit a course for no grade must obtain approval from the applicable Graduate Department Chair. Students auditing a course will not be listed on the official class roll, and no notation of the audit will be made on the student's transcript. Students enrolled for 12 or more semester credit hours may audit a course without paying an additional fee. All other students must pay a \$10 fee for auditing a course.

Provisional Admission

If the requirements for full admission are not met, provisional admission may be available. Students who do not meet the minimum requirement for admission are evaluated by the MSN Program Council. Provisional admission requires the student to enroll in six (6) semester credit hours of graduate level courses for a semester and obtain a grade of "B" or higher. Students are not eligible for scholarships while on provisional status. The provisional status is changed to full matriculation once the student has successfully completed six (6) semester credit hours of graduate level course work with a grade of "B" or higher.

Conditional Admission

If the requirements for full admission are not met, conditional admission may be available. The student is required to comply with "conditions" stated in the letter of admission offer prior to the first day of class for the semester the student is applying. Examples of conditional admission include, but are not limited to, the following:

- BSN completion confirmation (student graduating in current semester and verification is not available until the end of the semester)

graduating in current semester and verification is not available until the end of the semester)

BSN complete levy TTT*[(co)11(ur)son mayion req(m).

and MSN Program Council are responsible for overseeing all readmissions to the School of Nursing MSN Programs. Readmission of a student who has been dismissed or who withdrew for academic or disciplinary causes is also based upon the decision of the applicable Graduate Department Chair and MSN Program Council.

A student seeking readmission must comply with the following:

- Submit a letter requesting readmission to the Graduate Program
- Meet all recommendations and requirements set forth by the Department Chair and MSN Program Council
- Complete online application and meet admission criteria for full admission

Student Transfers from Other Educational Institutions

Students requesting admission to the TTUHSC SON graduate programs as a transfer student from another college or university must meet the following criteria:

- Eligible to return to the institution from which the student is transferring
- Complete a full application to the applicable MSN program by the deadlines specified for the semester of transfer to TTUHSC
- Student previously enrolled in the graduate program at TTUHSC School of Nursing who has attended another institution and is seeking to return must apply for readmission; any courses considered for transfer credit will be required to meet the standards for transfer credit
- Complete the majority or over 50% of the required credits to complete the

degree at TTUHSC School of Nursing.

RECOGNITION OF PREVIOUS NURSING LEARNING

Transfer Credit

The decision to award transfer of academic credit is made by the applicable Graduate Department Chair after a thorough review of the applicant's transcript for evidence of satisfactory course work completion and review of the course catalog descriptions and/or course syllabi as necessary to determine course equivalency. The decision to award transfer credit is based on the TTUHSC Transfer Credit Guidelines and Procedures http://www.ttuhschool.edu/catalog/credit_transfer.aspx. Generally, credits earned at a regionally accredited college or university are accepted for transfer provided course content is equivalent and a grade of "B" or higher has been earned in the course. The majority, or over 50%, of the required credits toward a TTUHSC School of Nursing graduate degree must be earned at TTUHSC.

PLEASE NOTE: courses previously taken as Pass-Fail will not transfer for credit if the course is required for a School of Nursing Degree.

Students requesting courses to be considered for transfer credit will:

- Submit official transcripts for courses considered for transfer credit
- Submit course descriptions and course content for each course

Credit accepted for transfer and applied to the student's degree program will appear on the TTUHSC transcript under the name of the institution where the student completed

the course. Transfer credit will not alter a student's TTUHSC Grade Point Average.

A student previously enrolled in the graduate program at TTUHSC School of Nursing who has attended another institution and is seeking to return and transfer in course credit must apply for readmission. Courses accepted for transfer will be required to meet the standards for transfer credit.

OFFER OF ADMISSION

Offers of admission will be made approximately six - eight weeks following the application deadline. In order to assure a place in the desired program, applicants must comply with the following:

- Accept offer in Merlin supplemental application on or before date specified in the offer of admissions letter
- Submit \$100.00 non-refundable placement fee
- Complete Criminal Background Check online
- Submit evidence of compliance with required immunizations
- Complete Sexual Harassment training online and submit certificate of completion
- Complete required trainings as specified during virtual orientation
- Failure to respond to admissions offer by the date specified in offer letter may result in withdrawal of the offer of admission.
- All students admitted to the MSN Program are required to attend a mandatory on-campus orientation held at the Lubbock campus prior to the first semester of enrollment.

DEGREE REQUIREMENTS FOR STUDENTS ADMITTED TO PROGRAM

(Master of Science in Nursing)

Graduation Under a Particular Catalog

A student is expected to complete the degree requirements set forth in the School of Nursing Catalog in effect at the time the student enters the chosen area of study.

Only with the specific approval of the applicable Graduate Department Chair may

a di ers o1(p)10.9uf aas3(R)TJS(3(o)16(va)-5S(3oe)F0009
degrees exg Cu#7.9T*[2(r t) o10 (ml

- Program Council.
- MSN students are required to maintain a 3.0 GPA with grades at “B” or above in all graduate courses. Students with a cumulative or semester GPA below 3.0 are placed on academic probation.
 - Students receiving “C” or lower in a graduate course are eligible to repeat the course one time only pursuant to recommendation of course faculty.
 - Students earning an overall cumulative GPA or a semester GPA less than a 3.0 in the semester of graduation/completion are ineligible for graduation/completion.

while enrolled in and attending classes at TTUHSC and should not be confused with “residence” in the Stat8(em)4(es)exssursp1 TD[(0)-3(s)8(i)Ma)19

Academic Dismissal from the School of Nursing MSN Program will result from the following circumstances:

- Students earning a “C” or lower in two or more graduate courses in one semester.
- Students earning a “C” or lower in the same nursing course twice.
- Students earning a “C” or lower in a second graduate course even though one graduate courses has been retaken and a satisfactory grade of “B” or better has been obtained.
- Cumulative semester or cumulative GPA less than 2.0 for two consecutive semesters

Failing to meet expected standards in any program may result in academic dismissal at any time.

Residence Credit

e minimum residence for the MSN degree is the majority, or over 50%, of graduate course work carrying residence credit must be completed at TTUHSC. Residence credit as used here means credit for work done

DEGREE PLAN

- Upon initial enrollment into the TTUHSC Graduate Programs, each student is provided with a degree plan, individualized according to his/her program of study and part-time or full-time enrollment status. The student's individual needs and circumstances (i.e., part-time or full-time enrollment, transfer courses, etc.) are considered when developing the degree plan.
- The applicable Graduate Department Chair for the program in which the student is enrolled is responsible for approving the degree plan.
- The applicable Graduate Department

MSN Degree Course Requirements for Leadership Programs

MSN Nursing Administration

(Total Credit Hours Required for Completion – 39)

KEY:

- (F) Face-to-face
- (O) Online
- (H) Hybrid (combination of face-to-face and online)
- **(CL)** Concurrent enrollment in a Clinical Section is required
- **(#:#:#)** First # represents the number of credit hours, Second # represents the number of lecture hours per week, Third # represents the number of clinical hours per week
- * Elective Courses are offered at select times as faculty and interest are present
- **(V)** Variable Credit

MSN Nursing Informatics

(Total Credit Hours Required for Completion – 39)

Required Core Nursing Courses (18 credit hours)		
Number	Course Name	Credits
NURS5322	Health Informatics for Advanced Nursing Practice	(3:3:0 O)
NURS5323	Leadership for Advanced Nursing Practice	(3:3:0 O)
NURS5324	Population Health Essentials for Advanced Nursing Practice	(3:3:0 O)
NURS5325	Health Policy Essentials for Advanced Nursing Practice	(3:3:0 O)
NURS5326	Research for Advanced Nursing Practice	(3:3:0 O)
NURS5327	Evidence for Advanced Nurse Practice	(3:3:0 O)

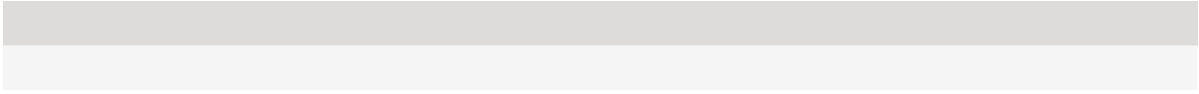
Specialty Courses (21 credit hours)		
Number	Course Name	Credits
NURS5386	Finance and Budgeting for Nurse Leaders	(3:3:0 O)
NURS5231	Informatics I: Foundations of Nursing Informatics Specialization: eories of Practice	(2:2:0 O)
NURS5432	Informatics II: Health Information Management and Knowledge, CL	(4:2:6 O)
NURS5333	Informatics III: Information Technology, CL	(3:2:3 O)
NURS5334	Informatics IV: Health Information Technology Systems Life Cycle, CL	(3:2:3 O)
NURS5335	Informatics V: Managing and Leading in Informatics, CL	(3:2:3 O)
NURS6440	Informatics VI: Practicum, CL	(3:0:9 O)

MSN Degree Course Requirements for APRN Programs

Family Nurse Practitioner

(Total Credit Hours Required for

Adult-Gerontology Acute Care Nurse Practitioner
(Total Credit Hours Required for Completion – 48)



Acute Care Pediatric Nurse Practitioner (AC-PNP)

(Total Credit Hours Required for Completion – 51)

Required Core Nursing Courses (18 credit hours)		
Number	Course Name	Credits
NURS5326	Research for Advanced Nursing Practice	(3:3:0 O)
NURS5327	Evidence for Advanced Nurse Practice	(3:3:0 O)
NURS5325	Health Policy Essentials for Advanced Nursing Practice	(3:3:0 O)
NURS5324	Population Health Essentials for Advanced Nursing Practice	(3:3:0 O)
NURS5323	Leadership for Advanced Nursing Practice	(3:3:0 O)
NURS5322	Health Informatics for Advanced Nursing Practice	(3:3:0 O)

Pre-requisite Nursing Courses (15 credit hours)		
Number	Course Name	Credits
NURS5312	Foundations for Advanced Practice Nurse Role	(3:3:0 O)
NURS5320	(3:3:0 O)	

Nurse Midwifery

(Total Credit Hours Required for Completion – 51)

Required Core Nursing Courses (18 credit hours)		
Number	Course Name	Credits
NURS5326	Research for A5.724 l2(w)-27(307.T)68 5(dTd[(N(N(N(Nc4D1e)-7(p)7(lec9(m)4(e)]TJ25.622 T	

MSN Collaborative TTUHSC- Angelo State University (ASU) Degree Course Requirements

All students need to complete both ASU and TTUHSC applications for admission. Upon receipt of completed application, ASU will evaluate the candidate and, if acceptable for admission to the ASU program, the student should contact Texas Tech University Health Sciences Center School of Nursing for admission information. The Department Chair for the TTUHSC School of Nursing MSN APRN Program in conjunction with the TTUHSC MSN Program Council will determine if the applicant may enter the program. The program requires 30 credit hours from TTUHSC and 18 hours from ASU.

Family Nurse Practitioner

(Total Credit Hours Required for Completion – 48)

KEY:

- (F) Face-to-face
- (O) Online
- (H) Hybrid (combination of face-to-face and on-line)
- **(CL)** Concurrent enrollment in a Clinical Section is required
- **(#:#:#)** First # represents the number of credit hours, Second # represents the number of lecture hours per week, Third # represents the number of clinical hours per week
- * Elective Courses are offered at select times as faculty and interest are present
- **(V)** Variable Credit

Required Nursing Courses from TTUHSC (30 credit hours)		
Number	Course Name	Credits
NURS5312	Foundations for Advanced Practice Nurse Role	(3:3:0 O)
NURS5320	Diagnostic Methods for Advanced Nursing Practice, CL (Requires on-campus lab)	(3:2:3.5 O)
NURS5324	Population Health Essentials for Advanced Nursing Practice	(3:3:0 O)
NURS5323	Leadership for Advanced Nursing Practice	(3:3:0 O)
NURS5322	Health Informatics for Advanced Nursing Practice	(3:3:0 O)
NURS5440	Primary Health Care I, CL	(4:2:7 O)
NURS5541	Primary Health Care II, CL	(5:2:10.5 O)
NURS6660	Family Nurse Practitioner Practicum: Requires a portion of clinical hours in medically underserved and /or rural setting, CL	(6:1:17.5 O)

All Family Nurse Practitioner students are required to hold ACLS Certification prior to the first population focus clinical course.

Applicants to the Family Nurse Practitioner (FNP) track must have one (1) year of experience as a RN prior to application submission.

Adult-Gerontology Acute Care Nurse Practitioner
(Total Credit Hours Required for Completion – 48)

Pediatric Primary Care Nurse Practitioner

(Total Credit Hours Required for Completion – 48)

Required Transfer Courses from Angelo State University (18 credit hours)		
Number	Course Name	Credits
*NUR 6323	Research Foundation for Advanced Nursing	(3)
*NUR 6312	Evidence-Based Practice and Theory for Advanced Nursing	(3)
NUR 6317	Health Policy and Ethics	(3)
NUR 6324	Advanced Pathophysiology	(3)
NUR 6331	Advanced Health Assessment (Required clinical hours)	(3)
NUR 6318	Pharmacotherapeutics	(3)

Required Nursing Courses from TTUHSC (15 credit hours)		
Number	Course Name	Credits
NURS5312	Foundations for Advanced Practice Nurse Role	(3:3:0 O)
NURS5320	Diagnostic Methods for Advanced Nursing Practice, CL (Requires on-campus lab)	(3:2:3.5 O)
NURS5324	Population Health Essentials for Advanced Nursing Practice	(3:3:0 O)
NURS5323	Leadership for Advanced Nursing Practice	(3:3:0 O)
NURS5322	Health Informatics for Advanced Nursing Practice	(3:3:0 O)

Population Focus Courses (15 credit hours)		
Number	Course Name	Credits
NURS5480	Pediatric Primary Health Care I, CL	(4:2:7 O)
NURS5581	Pediatric Primary Health Care II, CL	(5:2:10.5 O)
NURS6680	Pediatric Nursing Practitioner Practicum, CL	(6:1:17.5 O)

All Pediatric Nurse Practitioner students are required to hold PALS Certification appropriate to their clinical specialty as a pre-requisite to NURS 5480. Two (2) years of RN experience in pediatrics required for admission.

Adult-Gerontology Acute Care Nurse Practitioner Post Master's Certificate

(Total Credit Hours Required for Completion – 30)

Pre- or co-requisites to Required Nursing Courses:

The Department Chair will review the applicant's previous academic preparation and/or competency in required courses in order to award transfer credit. Any deficiencies will be met by enrollment in required courses.

Required Nursing Courses (30 credit hours)		
Number	Course Name	Credits
NURS5312	Foundations for Advanced Practice Nurse Role	(3:3:0 O)
NURS5320	Diagnostic Methods for Advanced Nursing Practice, CL (Requires on-campus lab)	(3:2:3.5 O)
NURS5342	Advanced Health Assessment, CL (Requires-on campus lab)	(3:2:3.5 O)
NURS5343	Pharmacotherapeutics for Nurses in Advanced Practice	(3:3:0 O)
NURS5345	Advanced Practice Nursing: Application of Pathophysiology	(3:3:0 O)
NURS5460	Adult-Gerontology Acute Care I, CL	(4:2:7 O)
NURS5561	Adult-Gerontology Acute Care II, CL	(5:2:10.5 O)
NURS6652	Adult-Gerontology Acute Care Practicum, CL	(6:1:17.5 O)

All Adult-Gerontology Acute Care Nurse Practitioner students are required to hold ACLS Certification prior to the first population focus clinical course.

One (1) year of RN experience within the last 5 years in acute care, ICU, or ER required for admission to the Adult-Gerontology Acute Care track.

Pediatric Primary Care Nurse Practitioner Post Master's Certificate

(Total Credit Hours Required for Completion – 30)

Pre- or co-requisites to Required Nursing Courses:

The Department Chair will review the applicant's previous academic preparation and/or competency in required courses in order to award transfer credit. Any deficiencies will be met by enrollment in required courses.

Required Nursing Courses (30 credit hours)		
Number	Course Name	Credits
NURS5312	Foundations for Advanced Practice Nurse Role	(3:3:0 O)
NURS5320	Diagnostic Methods for Advanced Nursing Practice, CL (Requires on-campus lab)	(3:2:3.5 O)
NURS5342	Advanced Health Assessment, CL (Requires on-campus lab)	(3:2:3.5 O)
NURS5343	Pharmacotherapeutics for Nurses in Advanced Practice	(3:3:0 O)
NURS5345	Advanced Practice Nursing: Application of Pathophysiology	(3:3:0 O)
NURS5480	Pediatric Primary Health Care I, CL	(4:2:7 O)
NURS5581	Pediatric Primary Health Care II, CL	(5:2:10.5 O)
NURS6680	Pediatric Nursing Practicum, CL	(6:1:17.5 O)

All Pediatric Nurse Practitioner students are required to hold PALS Certification prior to the first population focus clinical course.

Two (2) years of RN experience in pediatrics required for admission

Required Nursing Courses (33 credit hours)		
Number	Course Name	Credits
NURS5312	Foundations for Advanced Practice Nurse Role	(3:3:0 O)
NURS5320	Diagnostic Methods for Advanced Nursing Practice, CL (Requires on-campus) Advanced Health Ag s Td[(N)35(um)10(b)-9(e)]TJ6.318 0 .31. iTr	

Pre-requisite Nursing Courses (15 credit hours)		
Number	Course Name	Credits
NURS5312	Foundations for Advanced Practice Nurse Role	(3:3:0 O)
NURS5320	Diagnostic Methods for Advanced Nursing Practice, CL (Requires on campus lab)	(3:2:3.5 O)
NURS5342	Advanced Health Assessment, CL (Requires on campus lab)	(3:2:3.5 O)
NURS5343	Pharmacotherapeutics for Nurses in Advanced Practice	(3:3:0 O)
NURS5345	Advanced Practice Nursing: Application of Pathophysiology	(3:3:0 O)

Population Focus Courses (18 credit hours)		
Number	Course Name	Credits
NURS5304	Foundation for Nurse-Midwifery, CL	(3:1:3.5 O)
NURS5470	Nurse Midwifery I - Antepartum Care Management, CL	(4:2:7 O)
NURS5571		

Nursing Informatics Post Master's Certificate

(Total Credit Hours Required for Completion – 21)

Pre- or co-requisites to Required Nursing Courses:

The Department Chair will review the applicant's previous academic preparation and/or competency in required courses in order to award transfer credit. Any deficiencies will be met by enrollment in required courses.

Specialty Courses (21 credit hours)		
Number	Course Name	Credits
NURS5386	Finance and Budgeting for Nurse Leaders	(3:3:0 O)
NURS5231	Informatics I: Foundations of Nursing Informatics Specialization: Theories of Practice	(2:2:0 O)
NURS5432	Informatics II: Health Information Management and Knowledge, CL	(4:2:6 O)
NURS5333	Informatics III: Information Technology, CL	(3:2:3 O)
NURS5334	Informatics IV: Health Information Technology Systems Life Cycle, CL	(3:2:3 O)
NURS5335	Informatics V: Managing and Leading in Informatics, CL	(3:2:3 O)
NURS6440	Informatics VI: Practicum, CL	(3:0:9 O)

Doctor of Nursing Practice (DNP)

Barbara Cherry, DNSc, MBA, RN, NEA-BC, Department Chair

Purpose

The purpose of the Doctor of Nursing Practice (DNP) Program is to provide a rigorous education to prepare clinical scholars who translate science to improve population health through expert leadership that powers innovation in health care for West Texas, the state, and the nation.

Student Learning Outcomes

Upon program completion, the graduate will be prepared to:

- Integrate nursing science with knowledge from ethics, biophysical, psychosocial, analytical, and organizational sciences to advance health and health care delivery systems.
- Develop and operationalize effective,

DNP Admission Requirements

Applicant must submit the following application requirements for full admission:

- Current licensure as a registered nurse in the United States
- Master of Science in Nursing degree from a regionally accredited college or university with nursing program accreditation from the Commission on Collegiate Nursing Education (CCNE) or from the National League for Nursing Accrediting Commission (NLNAC).
- GPA of 3.0 for master's degree
- Graduate level nursing research course
- Three letters of reference attesting to the applicant's academic ability and leadership potential, including one from a current professional colleague
- Personal Statement
- Interview with DNP faculty
- BLS certification
- Current CV or resume
- Oath of Residency
- Official transcripts from all institutions formerly attended.

NOTE: All transcripts must be from regionally accredited colleges or universities with nursing program accreditation from the Commission on Collegiate Nursing Education (CCNE) or from the National League for Nursing Accrediting Commission (NLNAC).

- Application Signature Page
- Application Fee

All DNP Advanced Practice Nursing applicants must meet the following additional requirements:

- Approval by a state nursing board to practice as a nurse practitioner or nurse midwife

- Current certification by a nationally recognized credentialing body as a nurse practitioner or nurse midwife
- Minimum of one year's experience as a nurse practitioner

All DNP Executive Leadership applicants must meet the following additional requirements:

- Minimum of one year's experience in a healthcare leadership position

Applicants with unique credentials will be considered on a case-by-case basis. Such applicants may be required to complete one or more additional graduate nursing courses.

A comprehensive review of the candidate's application will include consideration of the following factors.

- Academic performance and aptitude
- Career achievements
- Ability to perform capably in positions of responsibility for self and others
- Potential for leadership in the DNP advanced role.

Although academic criteria (cumulative GPA, grades earned in nursing courses, and failed/repeated courses) are the most important factors in admission considerations, additional non-academic information is considered. These non-academic factors include but are not limited to:

- Extracurricular activities
- Evidence of leadership in nursing
- Work experience
- Diversity of experience such as study abroad, knowledge of other cultures,

- proficiency in other languages
- Permanent resident of TTUHSC service area county
- First generation college student
- Bilingual - English /Spanish
- Military service

All applicants will be reviewed in an individual and holistic manner. No single factor will determine a student's admission. All applicants receiving offers of admission will be required to consent to a criminal background check. A history of criminal conduct or convictions may result in withdrawal of the admission offer. See 'Criminal Background Checks' section of the School of Nursing, www.ttuhschoolofnursing.edu for the school policy. Criminal Background Checks must be received prior to matriculation to the TTUHSC DNP Program. The TTUHSC Criminal Background policy may be found at HSC OP 10.20. <http://www.ttuhschoolofnursing.edu/HSC/OP/OP10>.

Only **complete** applications are reviewed for admission consideration, **which means "ALL" admission requirements must be received by the TTUHSC Registrar's Office by the application deadline.**

The DNP Program Department Chair, DNP Program Director and the DNP Program Council carefully evaluate all qualified applicants with regard to the applicant's potential for successful completion of the program.

Computer Requirements

See Computer Requirements on page 33.

Criminal Background Checks

A Criminal Background Check (CBC)

must be completed prior to enrollment at TTUHSC School of Nursing in compliance with TTUHSC OP 10.20, <http://www.ttuhschoolofnursing.edu/hsc/op/op10/op1020.pdf>. Each student is responsible for the cost of his/her CBC and any additional fees.

Graduate students will complete the Hire Right Criminal Background Check process. Information will be provided to new students with orientation information.

The following searches are required for students pursuing clinical training through TTUHSC:

- Criminal History Record Information Search (including all residences for the last seven years);
- Social Security Number Trace (residential history, state and year SSN issued);
- Sex Offender Registry;
- Office of Inspector General Sanction Report;
- General Services Administration Excluded List;
- Office of Foreign Asset Control; and
- Texas State Exclusion List.

Additional background checks are required after a break in enrollment in accordance with TTUHSC OP 10.20 <http://www.ttuhschoolofnursing.edu/hsc/op/op10/op1020.pdf>.

If an applicant believes the record is in error and gives written notification to the School of his/her intent to challenge the report, matriculation will be put on hold pending the outcome of the challenge. Should the applicant fail to notify the School of his/her intent to challenge or it is determined that the record is accurate at the conclusion of a vendor challenge by an applicant; the

admission offer will be withdrawn.

NOTE: Expunged and Sealed Offenses

While expunged or sealed offenses, arrests, tickets, or citations need not be disclosed, it is your responsibility to ensure the offense, arrest, ticket or citation has, in fact, been expunged or sealed. It is recommended that you submit a copy of the Court Order expunging or sealing the record in question to our office with your application. Failure to reveal an offense, arrest, ticket, or citation that is not in fact expunged or sealed, will at a minimum, subject your license to a disciplinary fine. Non-disclosure of relevant offenses raises questions related to truthfulness and character.

NOTE: Orders of Non-Disclosure

Pursuant to Tex. Gov't Code § 552.142(b),
 i(s a)eaet, oe(y o)110(er)]TJETqim-29(y (t a m)3(s n)9(t)-93(.)]T9(te3(a)9 19(t i)3(s n)4.1 n)4(e o)12.1((s a)e)-
 acctics35(s a)e

SPECIAL STUDENT ENROLLMENT

Non-Degree

Special Student enrollment is not an avenue for seeking a degree. Under certain circumstances, it may be appropriate for an individual to seek admission as a non-degree seeking student. Non-degree Special Student admission is for the purpose of taking a limited number of courses. The applicant must seek approval from the DNP Program Department Chair prior to submitting a special student (non-degree) application. The student must also be eligible for admission under the following criteria:

- Currently enrolled in a master's or doctoral program at a college or university and is in good academic standing;
- Registered nurse with a MSN not enrolled in an educational institution;
- Waiver to the above requirement from

Readmission

All requests for readmission must be made prior to the application deadline date for the semester in which readmission is requested.

The DNP Program Department Chair, DNP Program Director and DNP Program Council are responsible for overseeing all readmissions to the School of Nursing DNP Program. Readmission of a student dismissed or withdrawn for academic or disciplinary causes is also based upon the decision of the Department Chair, DNP Program Director, and DNP Program Council.

A student seeking readmission must comply with the following:

- Submit a letter requesting readmission to the DNP Program.
- Meet all recommendations and requirements set forth by the DNP Program Department Chair, DNP Program Director and DNP Program Council
- Complete online application and meet admission criteria for full admission

Transfer Student

Students requesting admission to the TTUHSC School of Nursing DNP program as a transfer student from another university must meet the following criteria:

- Transfer student must be eligible to return to the institution from which the student is transferring.
- Submit a full application by the application deadline date for the semester in which transfer is requested.
- Student previously enrolled in the graduate program at TTUHSC School of Nursing who has attended another institution and is seeking to return must apply for readmission; any courses

considered for transfer credit will be required to meet the standards for transfer credit

- Complete the majority, or over 50%, of the required credits to complete the degree at TTUHSC School of Nursing

RECOGNITION OF PREVIOUS NURSING LEARNING

Transfer Credit

The decision to award transfer of academic credit is made by the DNP Program Department Chair or DNP Program Director after a thorough review of the applicant's transcript for evidence of satisfactory course work completion and review of the course catalog descriptions and/or course syllabi as necessary to determine course equivalency. The decision to award transfer credit is based on the TTUHSC Transfer Credit Guidelines and Procedures http://www.ttuhschool.edu/catalog/credit_transfer.aspx. Generally, credits earned at a regionally accredited college or university are accepted for transfer provided course content is equivalent and a grade of "B" or higher has been earned in the course.

The majority, or over 50%, of the required credits toward a TTUHSC School of Nursing graduate degree must be earned at TTUHSC.

Students requesting courses to be considered for transfer credit will:

- Submit official transcripts for courses considered for transfer credit
- Submit course descriptions and course content for each course

A student previously enrolled in the graduate program at TTUHSC School

institution and is seeking to return and transfer in course credit must apply for readmission. Courses accepted for transfer will be required to meet the standards for transfer credit.

OFFER OF ADMISSION

Offers of admission will be made approximately six - eight weeks following the application deadline. In order to assure a place in the desired program, applicants must comply with the following:

- Return Acceptance Form on or before date specified in the offer of admissions letter
- Submit \$100.00 non-refundable placement fee
- Submit evidence of compliance with required immunizations
- Complete Criminal Background Check online
- Complete Sexual Harassment training online and submit certificate of completion
- Failure to respond to admissions offer by the date specified in offer letter may result in withdrawal of the offer of admission.

DEGREE REQUIREMENTS FOR STUDENTS ADMITTED TO DNP PROGRAM

Graduation Under a Particular Catalog

A student is expected to complete the degree requirements set forth in the School of Nursing Catalog in effect at the time the student enters the chosen area of study. Only with the specific approval of the DNP Program Department Chair may a different Catalog be selected. Students, in all cases are prohibited from completing the requirements set forth in

a catalog more than seven years old. The Catalog is published at least biennially and its provisions are applicable during the stated Academic year (September 1st through August 31st). However, a student registering for the first time at TTUHSC during a summer semester is subject to the degree requirements set forth in the Catalog.

- same DNP course twice
- Students earning a “C” or lower in a second DNP course even though one DNP course has been retaken and a satisfactory grade of “B” or better has been obtained

Failing to meet expected standards in any program may result in academic dismissal at any time. Academically dismissed students are eligible to be readmitted according to the stipulations noted in the “Readmission” section above.

Residence Credit

The minimum residence for the DNP degree is the majority, or over 50%, of graduate course work carrying residence credit be completed at TTUHSC. Residence credit as used here means credit for work done while enrolled in and attending classes at TTUHSC and should not be confused with “residence” in the State of Texas.

Majority of Credits

The majority or over 50% of credits toward any graduate or post-baccalaureate professional degree awarded by the TTUHSC must be earned:

- At TTUHSC
- In the case of those programs offered through joint, cooperative, or consortia arrangements through instruction offered by the participating institutions.

Semester Credit Hours and Course Loads

The semester credit hour is the unit of measure for credit purposes. Didactic (lecture) hours are measured on a one-to-one basis; clinical hours are measured on a one-to-six basis for the DNP program. Approximately two hours in preparation

for each hour of lecture/didactic and an appropriate amount of time for preparation for clinical activities are required. The number of semester credit hours a student may carry (course load) is regulated by the DNP Program Department Chair or Program Director. In determining this load, the DNP Program Department Chair takes into account the quality of prior scholastic work performed and the types of courses involved. A student enrolled in nine (9) or more credit hours in the Fall or Spring semester and six (6) or credit hours in the Summer semester is considered full-time.

DEGREE PLAN

- Upon initial enrollment into DNP Program, each student is provided with a degree plan, individualized according to the student’s program of study and part-time or full-time enrollment status. The student’s individual needs and circumstances (i.e., part-time or full-time enrollment, preference for electives, transfer courses, etc...) are considered when developing the degree plan.
- The DNP Program Department Chair or Program Director for the track in which the student is enrolled is responsible for approving the degree plan.
- The DNP Program Department Chair or designee reviews the initial degree plan with the student upon enrollment in the DNP Program. The student signs the degree plan to indicate the student’s agreement with the plan and is provided with a signed copy of the plan.
- Students are responsible for notifying the DNP Program office anytime the

SEMESTER V (9 credit hours)		
NURS7332	Evidence-Based Inquiry II	(3:3:0 H)
NURS7331	Population Health at the Organizational and Public Policy Level, CL	(3:2.25:4.5 H)
NURS7321	Health Care Economics and Finance, CL	(3:3:0 H)

SEMESTER VI (6 credit hours)		
NURS7350	Capstone Project and Practicum, CL	(3:1.5:9 H)
NURS7330	Integrating Community Mental Health into Health Care Systems, CL	(3:2.5:3 H)

Graduate Department Course Descriptions

Graduate courses are delivered via face-to-face, online, or hybrid methodologies.

All pre- or co-requisites and any designated conditions/criteria for previous courses apply throughout the curriculum.

KEY:

- Courses are listed in numerical order
- (F) Face-to-face
- (O) Online
- (H) Hybrid (combination of face-to-face and on-line)
- (CL) Concurrent enrollment in a Clinical Section is required
- (#:#:#) First # represents the number of credit hours, Second # represents the number of lecture hours per week, Third # represents the number of clinical hours per week
- * Elective Courses are offered at select times as faculty and interest are present
- (V) Variable Credit

5000 Level Courses

5060. Individual Studies (V1-6 T, H, O)

Designed to meet special needs and interests of a student who proposes a specific plan of study. Course varies from 1-6 semester hours and course may be repeated as topic and/or objective of study changes.

5080. Special Topics (V1-6 H, O)

Designed to focus on subjects of special interest to groups of students. May be repeated for credit as topics vary.

5100. Foundations of the Well Child (1:1:0 O)

This course is designed to explore growth and development of children from birth to young adult as a foundation for pediatric nurse practitioner practice. The course will focus on age specific milestones and implications for counseling, disease prevention, and health promotion based on national guidelines. This course will include significant influences on growth and development such as: nutrition, genetic/genomics, psychosocial, socioeconomic, cultural and spiritual influences.

5231. Informatics I: Foundations of Nursing Informatics Specialization: Theories of Practice

(2:2:0 O)

(Prerequisite: Enrollment in MSN Nursing

experience, all serve as the foundation for the course.

5304. Foundations for Nurse Midwifery (CL)

(3:2:3.5 O)

(Pre-Requisite: NURS 5312, 5320, 5342, 5343, 5345, EFM and Neonatal Resuscitation Protocol; Co-Requisite NURS 5470). Examines selected issues/topics that enhance full scope of nurse-midwifery practice beyond the pregnancy and birth phases of the reproductive years. Clinical experiences are planned for family planning, contraceptive management, gynecologic visits- including peri/postmenopausal visits and primary care.

5306 Pathophysiology of Obesity

(3:3:0 O)

Study of the cellular, systemic, and whole-body physiological effects of obesity and weight control efforts. Emphasis is on the analysis and application of research findings pertaining to obesity for professional practice in assessing and managing the health care problems of overweight people across the life span.

5312. Foundations for Advanced Practice Nursing Role

(3:3: 0 O)

This course is a study of the Advanced Practice Registered Nurse (APRN) role, including the evolution of the role, current and continuing issues relevant to advanced practice nursing and clinical practice issues. Course activities include observation, discussion, and analysis of experiences.

5314. Leadership in Nursing Education I: Best Practices in Teaching & Technology Integration

(3:3:0 O)

(Prerequisite: MSN student enrolled in the Nursing Education track) This course focuses on the nurse educator role by creating the foundational components of learning principles.

5306 Leadership in Nursing Education I:

**5335. Informatics V: Managing and
Leading in Informatics (CL)**

(3:2:3 O)

(Pre or Corequisites: NURS 5333, 5334)
is course will focus on the nursing

**5349. Perspectives in Obesity
(3:3:0 O)**

Study of the biological, psychological, and socio-cultural responses to obesity and weight control efforts. Emphasis is on the analysis and application of research findings pertaining to obesity for professional practice across the life span.

**5372. Utilizing the Arts in Healthcare
(3:3:0 O) (*Elective)**

This course is an introductory study and overview of current and past methods of incorporating the arts into the healthcare setting for patients, families and healthcare staff and professionals. Attention will be paid to cultural and age diversities and education, psychological and physical benefits derived from creative expression.

**5378. Primary Health Care for Women
(CL)
(3:1.85:4.0 O) (*Elective)**

(Prerequisite: NURS 5342 or consent of instructor.) Presents the theoretical and clinical basis for advanced practice nursing management of the woman who is essentially well or who has non-acute health problems. Emphasis is on the integration of primary health care screening, preventive health care, and health care promotion. Selected health problems common to women across the age continuum are addressed. Requires on campus skills lab.

**5385. Health Law Survey for the Nurse
Executive
(3:3:0 O)**

(Prerequisite: MSN student enrolled in Nursing Administration specialty track.) Students will explore legal issues and government regulations impacting the

health care arena and the delivery of care. Topics in the law and impinging ethical issues are explored using court cases and clinical case studies.

**5386. Finance and Budgeting for Nurse
Leaders
(3:3:0 O)**

(Prerequisite: MSN student enrolled in the Nursing Administration specialty track.) This course is designed to provide graduate students with information and skills for developing budgets and managing financial issues in health care facilities, clinics, independent practice or a nursing unit.

**5387. Palliative Care for APNs
(3:3:0 O) (*Elective)**

This course explores end-of-life (EOL) care and the role of Advanced Practice Nurses as members of interdisciplinary teams providing EOL care. Synthesis of advanced health assessment, advanced pharmacotherapeutics, advanced pathophysiology, and evidence based practice in the provision of palliative care will be emphasized.

**5440. Primary Healthcare I (CL)
(4:2:7 O)**

(Prerequisite: NURS 5312, 5320, 5342, 5343, 5345) This is a didactic and clinical course that builds upon concepts and skills derived from prerequisite courses. Advanced practice nursing (APRN) students will integrate theoretical and evidence-based knowledge of assessment, diagnosis, treatment, and evaluation of patients with acute and chronic health problems across the lifespan. The focus is on development of critical thinking and decision making skills necessary for the provision of safe and

effective primary health care in the nurse practitioner role.

N5460. Adult-Gerontology Acute Care I (CL)

(4:2:7 O)

(Prerequisite: NURS 5312, 5320, 5342, 5343, and 5345 and ACLS Certification.) This course is designed to develop a beginning theoretical and research based knowledge of assessment diagnosis, and treatment of adult and geriatric patients with acute and chronic health problems. Emphasis will be placed on applying this knowledge to the assessment and management of both health and illness states including disease prevention. Clinical activities focus on enhancing health assessment skills, delineating differential diagnoses, and learning initial clinical management of clients experiencing acute and chronic health problems. The role and competencies of the Adult-Gerontology Acute Care Nurse Practitioner will be examined.

5470. Nurse Midwifery I – Antepartum Care Management (CL)

(4:2:7 O)

(Prerequisite: NURS 5342, 5343, 5345, EFM and Neonatal Resuscitation Protocol; Co-Requisite: NURS 5304) Utilizes the Nurse Midwifery management process in provision of comprehensive prenatal care for women experiencing normal childbearing. Emphasis is placed on the assessment for maternal and fetal well-being with screening for deviations from normal that would require consultation/collaboration and/or referral. Educational needs and social/cultural contexts are included. The practicum includes Nurse Midwifery Management of women experiencing childbearing.

5480. Pediatric Primary Health Care I (CL)

(4:2:7 O)

(Prerequisite: NURS 5312, 5320, 5342, 5343, 5345, PALS certification.) Designed to develop theoretical and research-based knowledge of child health issues and well-child assessment of infants, children, and adolescents in the context of family and cultures, the course develops advanced practice skills in comprehensive assessment, as well as, management strategies re ecti16(w)-7(le)-4.9(dg(e co woratagement s5(r)4(lo16((et)-5(on)19(t)6(ext o)139(p)1me c

challenges, barriers and strategies for successful role implementation.

5561. Adult-Gerontology Acute Care II (CL)

(5:2:10.5 O)

(Prerequisite: NURS 5460) This course is designed to build on major components critical to the knowledge of diagnosis, treatment, and evaluation of adult and geriatric patients with acute and chronic health problems. Clinical experiences include a spectrum of care ranging from disease prevention to acute and critical care management. Clinical practice focuses on research-based clinical decision-making processes in close collaboration with preceptors.

5571. Nurse Midwifery II – Intrapartum/Postpartum/Newborn Care (CL)

(5:2:10.5 O)

(Prerequisite: NURS 5470) Allows the student to study, analyze, and apply the concepts of the Nurse Midwifery Management process for the intrapartum/postpartum care of women and care of the newborn. This course focuses on attainment of assessment and management skills in assuming responsibility for planning and providing Nurse Midwifery Management care for normal intrapartum patients with continuity of care into the postpartum, and newborn care up until the first 28 days of life.

5581. Pediatric Primary Health Care II (CL)

(5:2:10.5 O)

(Prerequisite: NURS 5480) Designed to further develop theoretical and research-based knowledge of diagnosis, treatment,

and evaluation of pediatric patients with acute and chronic health problems, the course develops advanced practice skills and comprehensive assessment and management strategies reflecting evidence-based nursing/medical knowledge and practice.

5600 Pediatric Acute Care II (CL)

(6:2:14 O)

(Prerequisite: N5500)

This course emphasizes the role of the Acute Care Pediatric Nurse Practitioner (AC-PNP) as a member of an interprofessional team managing complex acute, critical and chronic, illness across the entire pediatric age spectrum, from birth to young adult.

The student will assimilate knowledge from prerequisite courses. Emphasis is placed on formulating diagnoses, treatment plans, and use of evidence to provide expert pediatric clinical care. The student will perform consultations and make referrals in a variety of setting.

6000 Level Courses

6001. Graduation Station

(0:0:0 O)

Prerequisites: Student must be in their last semester of enrollment prior to graduation. Students are required to enroll in this course in the semester in which they are scheduled to graduate. This course serves as the vehicle for students to pay their graduation fee and complete the School of Nursing's Graduation Assessment. There is no tuition charged for this course, the student does not generate semester credit hours for the course, and the course is not graded.

**6010. Application of Administrative
Practice (CL)
(3:0:12 O)**

**6680. Pediatric Nurse Practitioner
Practicum (CL)**

(6:1:17.5 O)

(Prerequisite: NURS 5581 and successful completion of required clinical and functional courses.) This course provides a clinical immersion experience to integrate and synthesize the APRN role. Issues related to APRN responsibilities and competencies are addressed. Pediatric nurse practitioner students are required to complete a portion of practicum in an underserved or rural area.

tools that will facilitate the understanding of the breadth of subjects introduced during the semester.

7330. Integrating Community Mental Health Concepts into Health Care Systems (CL)

(3:2.5:3 H)

(Prerequisite: Concurrent enrollment in or completion of DNP core leadership courses and DNP core evidence-based courses.)

The course uses the field of integrative health care as a venue for developing the student's role to improve health care for rural and vulnerable populations who have limited access to conventional health services by introducing change within existing health care systems. Students are provided the opportunity to observe, analyze, and experience various culturally-based modalities and non-traditional health practices. Critical reviews of the application of evidenced based research approaches to examine the effectiveness and safety of CAM in advanced nursing practice will be synthesized within an analysis of health care systems.

7331 Population Health at the Organizational and Public Policy Level (CL)

(3:2.25:4.5 H)

(Prerequisite: Concurrent enrollment in or completion of DNP core leadership courses and DNP core evidence-based courses.)

The course provides nurse leaders in the DNP role with the skills to evaluate care delivery models and strategies related to community, environmental, occupational, cultural and socioeconomic dimensions of health. Students will learn to access and analyze population-level health data,

design evidence-based interventions at the organizational and public policy level, and predict and analyze outcomes to improve population health.

7332. Evidence Based Inquiry II (3:3:0 H)

(Prerequisite: NURS 6330, Evidence Based Inquiry I.) The course will build on Evidence Based Inquiry I, refining the student's ability to evaluate and synthesize evidence for integration into clinical practice. Emphasis will be placed on translating the evidence into actual clinical or management practice as well as creating an environment for the integration of evidence based practice within an organization. Students will further develop their capstone project in this course.

7350. Capstone Project and Seminar (CL) (3:2:6 H)

(Prerequisite: Concurrent enrollment in or completion of DNP advanced APN or executive leadership specialization courses.)

The capstone project incorporates evidence-based strategies for implementing and achieving health care outcomes such as a significant pilot study, a program evaluation project, a quality improvement project, or a practice change initiative derived from translational science and the DNP role. The capstone project serves as a foundation for future scholarly practice and is reviewed and evaluated by an academic community. Students share issues in a seminar format as the project nears completion.

**7351. DNP Practicum and Seminar (CL)
(3:2:6 H)**

(Prerequisite: Completion of DNP advanced APN or executive leadership specialization course.) The course provides an end of program practice immersion experience to integrate and synthesize the essentials necessary to demonstrate competency in an area of specialized nursing practice in the DNP role. Proficiency may be acquired through a variety of methods such as in-depth case studies, patient or practice contact hours, completing and demonstrating specified projects or competencies, or a combination of these elements. Students share issues related to implementation of the DNP role in a seminar format.

Faculty

TTUHSC School of Nursing Faculty

Acton, Cindy, DNP, RN, NEA-BC

Associate Professor and Associate Director for TTUHSC Quality Enhancement Plan – BSN (West Texas A&M), MSN (West Texas A&M), DNP (Case Western Reserve University)

Allen, Patricia, EdD, RN, CNE, ANEF, FAAN

Professor and Director, MSN Nursing Education Track – BSN (Old Dominion University), MSN (The Catholic University of America), EdD (Florida International University)

Andersen, Susan, PhD, RN, FNP-BC

Associate Professor – BA (Carleton College), RN (Mohawk College of Applied Arts and Technology), BSN (Lubbock Christian University), MSN (Texas Tech University Health Sciences Center), PhD (The

University of Texas Health Sciences Center Graduate School of Biomedical Sciences San Antonio, Texas)

Ashcraft, Alyce, PhD, RN, ANEF, CNE

Professor and Associate Dean for Research – BSN (Texas Woman's University), MSN (University of Texas at Arlington), PhD (University of Texas at Austin)

Bargainer, Ruth, MSN, RN

Assistant Professor - ASN (McMurry University), MSN (Texas Tech University Health Sciences Center)

Bezanson, Judy, DSN, RN, CNS-MS, FAHA

Associate Professor - BSN (Baylor University), MSN (University of Los Angeles), DSN (University of Alabama)

Boswell, Carol, EdD, RN, CNE, ANEF

Professor and Co-Director for the TTUHSC Center of Excellence in Evidence-Based

Practice – BSN (Texas Tech University Health Sciences Center), MSN (Texas Tech University Health Sciences Center), EdD (Texas Tech University)

Boyd, Elizabeth, MSN, RN

Instructor - MSN (The University of Texas at Austin)

Branham, Steven, PhD, RN, CS, ACNP-C, FNP-BC, CCRN

Assistant Professor – ADN (Central Ohio Technical College), BSN (University of Phoenix), MSN (The University of Texas Medical Branch Graduate School of Biomedical Sciences), ACNP-C (The University of Texas Medical Branch Graduate School of Biomedical Sciences)

Brewer, Sharon, MSN, BSN, RN

Instructor - Diploma (Northwest Texas Hospital School of Nursing), BSN (West Texas State University), MSN (West Texas A&M University)

Bridges, Ruth Ann, PhD, RN-BC

Fleming, Tammy, PhD(c), RN, BC
Assistant Professor - BSN (West Texas A&M University), MSN (Lubbock Christian University), PhD(c) (New Mexico State University School of Nursing)

Franco, Hollis, MSN, RN
Instructor – ADN (Covenant School of Nursing), BSN (Lubbock Christian University), MSN (Lubbock Christian University)

Gallegos, Belinda A, PhD(c), MSN, RN, CNE
Assistant Professor – BSN (Texas Tech University Health Sciences Center), MSN (Texas Tech University Health Sciences Center), PhD in progress (Texas Tech University)

Gautam, Bibha, PhD, RN
Assistant Professor and Site Coordinator – PCL (Tribhuvan University, Institute of Medicine), BEd (Tribhuvan University Kathmandu Education), BSN (Tribhuvan University, Institute of Medicine), PhD (University of North Dakota College of Nursing)

Geist, Rebecca A, MSN, RN
Instructor – ADN (Angelo State University), BSN (Angelo State University), MSN (Lubbock Christian University)

Goodwin, Diana, MSN, RN
Instructor - BS (Texas Tech University), BSN (Texas Tech University Health Sciences Center), MSN (Benedictine University)

Green, Alexia, PhD, RN, FAAN
Professor and Dean Emeritus – ADN (Alvin Community College), BSN (University of

Texas Medical Branch), MSN (University of Texas Health Science Center), PhD (Texas Woman's University)

Guenther, Joanna L, PhD, RN, FNP, BC
Associate Professor – BSN (University of Texas Austin), MSN (University of Texas Austin), FNP (University of Texas Health Science Center of San Antonio), PhD (Texas Woman's University College of Nursing)

Hagstrom, Ann, MSN, RN, NCSN
Assistant Professor, Undergraduate Program Director and Faculty Champion – BSN (Texas Tech University Health Sciences Center), MSN (Lubbock Christian University)

Hammond, Lori, MSN, RN
Instructor - LVN (Western Texas College), RN (Austin Community College), MSN (Texas Tech University Health Sciences Center)

Harkness, Laneigh, MSN, RN
Assistant Professor – BSN (Texas Tech University Health Sciences Center), MSN (Texas Tech University Health Sciences Center)

Harris, Oliva, MSN, RN, CCRN
Instructor - Diploma (Covenant School of Nursing), BS (Texas Tech University), BSN (West Texas A&M University), MSN (Lubbock Christian University)

Hilliard, Tara, MSN, RN, ACNP-BC
Assistant Professor, Program Director, Adult-Gerontology Acute Care NP Track - BSN (Texas Tech University Health Sciences Center), MSN (Texas Tech University Health Sciences Center)

(University of Texas at Arlington), MSN
(Western Governors University)

Lee, Molly, MSN, RN

Assistant Professor – BSN (Midwestern
State University), MSN (University of Texas
at Arlington)

Lowrance, Toni, MSN, RN

Instructor – BSN (Lubbock Christian
University), MSN (Lubbock Christian
University)

**Masten, Yondell, PhD, WHNP-BC, RNC-
OB**

Professor and Associate Dean, Outcomes
Management and Evaluation – Diploma
(Methodist Hospital), BS and BSN (West
Texas State University), MS (Texas Tech
University), MSN (University of Texas
at Austin), PhD (Texas Tech University),
Post Master's WHNP (University of Texas
Medical Branch at Galveston)

McBride, Susan, PhD, RN

Professor and Director, MSN Nursing
Informatics Track– BSN (University of
Texas at Arlington), MS (Texas Woman's
University), PhD (Texas Woman's
University)

McMurry, Linda, DNP, RN

Associate Professor and Executive Director
Larry Combest Community Health and
Wellness Center – BSN (Texas Tech
University Health Sciences Center School
of Nursing), MSN (Texas Tech University
Health Sciences Center), DNP (Texas Tech
University Health Science Center)

**Merrill, Emily, PhD, RN, FNP, BC, CNE,
FAANP**

Associate Dean / Department Chair for
Advanced Practice RN Programs, CH
Foundation Endowed Professorship

Newton, Kyle, MSN, RN, CCRN

Instructor – ADN (New Mexico State University), BSN (Lubbock Christian University), MSN (Lubbock Christian University)

Opton, Laura, DHSc, RN, CNE

Assistant Professor and Second Degree Program Coordinator – BSN (Texas Tech University Health Science Center), MSN (Lubbock Christian University), DHSc (Nova Southeastern University)

Owen, Donna C, PhD, RN, CNE

Professor, BA-Biology (Case Western Reserve University), BSN (Case Western Reserve University), MS (Boston University), PhD (Case Western Reserve University)

Paris, Donna, MSN, RN

Instructor – BSN (Central Oklahoma Edmond), MSN (Texas Tech University Health Sciences Center)

Perez, Elisa, MSN, RN

Instructor – ADN (Angelo State University), BSN (Texas Tech University Health Sciences Center), MSN, Lubbock Christian University)

Pickett, Amy, MSN, RN

Instructor - ADN (Weatherford College), BSN (Texas Tech University Health Sciences Center), MSN (Texas Tech University Health Science Center)

Rake, Jo, MSN, RN, CNA – BSN (Hardin Simmons University), MSN (Abilene Christian University)

Rogge, Mary Madeline, PhD, RN, FNP

Associate Professor – BSN (Texas Woman's University), MA (Ball State University), PhD (The University of Texas in Austin), Post Masters FNP (Texas Tech University Health Sciences Center)

Rose, Jan, MSN, RN

Assistant Professor – BSN (Texas Woman's University), MSN (Texas Tech University Health Sciences Center)

Ro2.9(y)TJT*(H)25(e)-6(a)-5(l)12(t)-5.9(h S).9(y)TJT*(H)2

Silvers, Charlotte, MSN, RN

Assistant Professor and Site Coordinator – BSN (Texas Tech University Health Science Center), MSN (Texas Tech University Health Science Center)

Tann, Sheila, ND, RN, CNS

Associate Professor - BS (Northern Arizona University), ND (University of Colorado Health Sciences Center)

Smith, Darla, MSN, RN

Instructor - Diploma (Covenant School of Nursing), BSN (Texas Tech University Health Science Center), MSN (Texas Tech University Health Science Center)

Sridaromont, Kathryn L, PhD, MSN

Associate Dean / Department Chair of Traditional Undergraduate Program – Diploma (Hotel Dieu School of Nursing), BSN (Incarnate Word College), MSN (University of Texas System School of Nursing)

Stansell, Priscilla, MSN, RN

Instructor – BSN (Baylor University, Louise Herrington School of Nursing), MSN (Lubbock Christian University)

Stegall, Gayle, MSN, RN, CPAN

Instructor - BSN (West Texas State University), MSN (Grand Canyon University)

Stuart, Christine, MSN, CNM, WHNP-BC

Assistant Professor and Director of the Nurse Midwifery Track - BS (Texas Woman's University), MSN (Texas Woman's University), Post Master's (University of Colorado Health Sciences Center - Denver).

Sun, Grace, MSN, RN, FNP, BC

Assistant Professor– BS (University of California, Berkeley) BSN (Johns Hopkins University), MSN (Johns Hopkins University)

Westfall, Angela, MSN, RNC-MNN, CNM
Instructor - BSN (Texas Tech University)

Brown-Stewart, Pamela E, DNP, RN, FNP
Diploma (Maryland General Hospital School of Nursing), BSN (College of Notre Dame), MSN (University of Texas Health Science Center at Houston), DNP (Texas Tech University Health Sciences Center)

Farren, Elizabeth A, PhD, RN
BSN (Northern Illinois University), MSN (University of Tennessee-Knoxville), PhD (University of North Texas)

Findlater, Melinda M, PhD, BS
BS (University of California), PhD (University of North Carolina at Chapel Hill)

Higgins, Bonnie, EdD, RN, CMSRN
Diploma (Baptist Memorial Hospital), BS (Incarnate Word College), MS (Texas Woman's University), EdD (Nova Southeastern University)

Holter, Virginia, DNP, RN, FNP-BC
BSN (University of Texas at Galveston), MSN (University of Texas at Houston), DNP (Texas Tech University Health Sciences Center)

Kowalski, Karren, PhD, RN, FAAN
BSN (Indiana University), MSN (University of Colorado), PhD (University of Colorado)

Kuzin, Julia, MSN, RN, CPNP-AC/PC
BSN (University of Texas Health Science Center- Houston), MSN (University of Texas Health Science Center-Houston)

Layton, Kristen, MSN, RN
BSN (University of Texas at Austin), MSN (University of Texas at Austin)

Le w ich, Kimberly, DNP, RN
ADN (Odessa College), BSN (Texas Tech University Health Sciences Center), MSN (Texas Tech University Health Sciences Center), DNP (Capella University)

Litterer, Karen, MSN, RN
BSN (Baylor University), MSN (Texas Tech University Health Sciences Center)

McMurry, Mike, DNP, ACNP-BC
BSN (West Texas State University), MSN (Texas Tech University Health Sciences Center), DNP (Texas Tech University Health Sciences Center)

Mello, Inola, DNP, RN, FNP-C
BSN (Texas Tech University Health Sciences Center), MSN (West Texas A&M-FNP), DNP (Texas Tech University Health Sciences Center)

Mixson, Kathleen L, MSN, JD, RN
ADN (San Bernardino Valley College), BS (Texas Woman's University), MS (Texas Woman's University), JD (Southern Methodist University School of Law)

Moore, Young, MSN, RN, CCRN, ACNP-BC
BSN (University of Illinois), MSN (Texas Tech University Health Sciences Center), ACNP (Texas Tech University Health Sciences Center)

Morris, Heather, MSN, RN, NP-C
BSN (Texas Tech University Health Sciences Center), MSN (Texas Tech University Health Science Center), FNP (Texas Tech University Health Sciences Center)

Olenick, Patricia, PhD, RN, ACNM

AA (Richland College), BSN (Texas Women's University), MSN (Corpus Christi State University), PhD (Touro University International)

Parker, Ahnna, RN, C, MSN, CIC

BSN (Baylor University), MSN (Texas Tech University Health Sciences Center)

Powers, Rebekah, DNP, RN

ADN (Rend Lake College), BA (University of Texas of the Permian Basin), MSN (University of Texas at El Paso), DNP (Rocky Mountain University of Health Professions)

Ragsdale, Vickie, PhD, RN

ADN (Meridian Community College), BSN (University of Texas at Austin), MSN (University of Texas at Austin), PhD (University of Texas at Austin)

Reeves, Patricia, RN, BSN, MSN, CNOR

Diploma (Covenant School of Nursing), BSN (West Texas State University), MSN (Lubbock Christian University)

Reeves, Shawn M, MSN, RN, BS, CPNP-AC/PC

Diploma (Covenant School of Nursing), BS (Texas A&M University), BSN (Lubbock Christian University), MSN (Lubbock Christian University)

Ritzert, Barbara, PhD, RN

BSN (Texas Woman's University), MSN (Texas Woman's University), PhD (Texas Woman's University)

Sanders, Ellarene D, PhD, RN, NEA-BC

BSN (University of Nebraska Medical Center), MSN (University of Texas Medical

Branch at Galveston), PhD (University of Texas Medical Branch at Galveston)

Sevcik, Lenora, DNP, RN

ADN (Del Mar Junior College), BSN (Texas Tech University Health Sciences Center), MSN (Texas Tech University Health Sciences Center), DNP (Texas Tech University Health Sciences Center)

Sparr, Rhonda, MSN, APRN, FNP-C

BSN (University of Texas at El Paso), MSN (University of Texas at El Paso), DNP (Texas Tech University Health Sciences Center)

Toon, Molly, MSN, RNC, CPNP

BSN (University of Texas at Arlington), MSN (Texas Tech University Health Sciences Center), PNP (Texas Tech University Health Sciences Center)

Tucker, Donella J, MSN, RN, RNC-OB

Diploma (Northwest Texas Hospital School of Nursing), BSN (West Texas State University), MSN (West Texas State University)

Webb, Paula, DNP, RN, NEA-BC

ASN (Cooke County Junior College), BSN (University of Texas at Arlington), MSN (University of Texas at Arlington), DNP (Rush University)

White, Joyce, MSN, RN

BA (Hollins College), MSN (University of Texas at Austin)

Wigmans, Farinaz, PhD, MBA, MSBA

MBA (Texas Tech University), MSBA (Texas Tech University), PhD (Texas Tech University)

**Yoder-Wise, Patricia S, EdD, RN, BC,
NEA-BC, FAAN, ANEF**