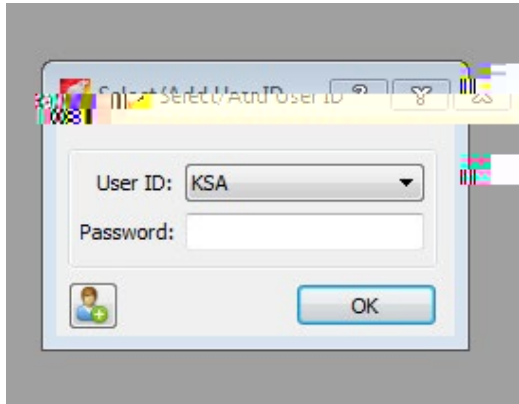
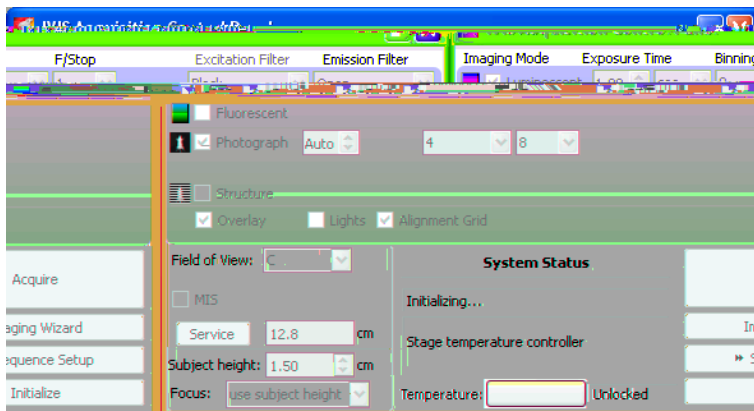


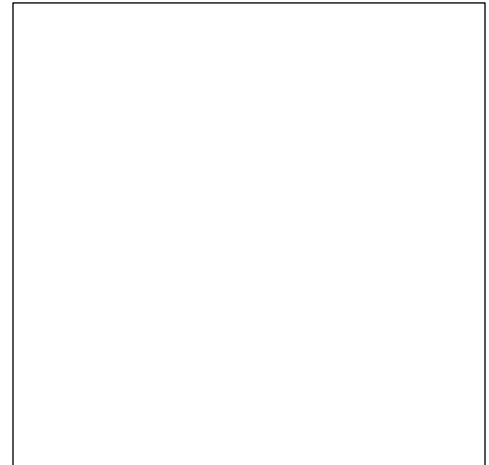
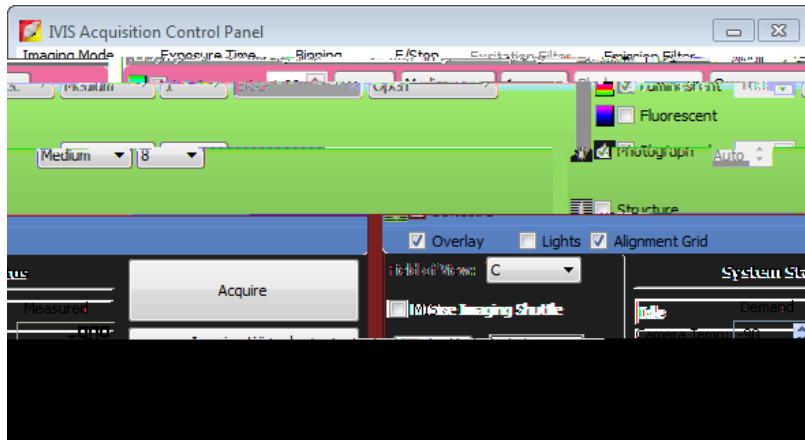
1. Double-click the Living Image software icon on the desktop.
2. In the dialog box that appears, select a user ID from the drop-down list. If the user ID is password protected, enter the password and click OK.



3. It will take several minutes for the check up the system and for camera to cool down to -90 (can be check by clicking on the red bar at the bottom of control window) Once the system is initialized and the camera is at proper temperature, red bar will turn green.



Red color appears in the Control panel during Initialization. The color Turns blue when Initialization is finished.



- 4)
 - a. Turn ON the O₂ supply at the tank. Make sure your tank has enough oxygen.
 - b. Turn ON oxygen supply from the chamber.
 - c. Follow instruction label and turn on all keys accordingly.
- 5) Place your mice for anesthesia in the induction chamber. Close it tightly. Let animals sleep.
- 6)
 - a. Put a check mark next to Luminescent and select Auto exposure.
 - b. Choose Photograph (selecting Photograph automatically selects Overlay).
 - d. Select a field of view "C".
 - e. Hit acquire button.
 - f. Image label box will open up. Fill up image/animal information in it.
- 7) The software will ask you if you want to autosave your images, this feature will save all images to the specified location. You can also manually save images. If an image is not saved, when you try to close the image or software a warning will indicate that you should save the image.