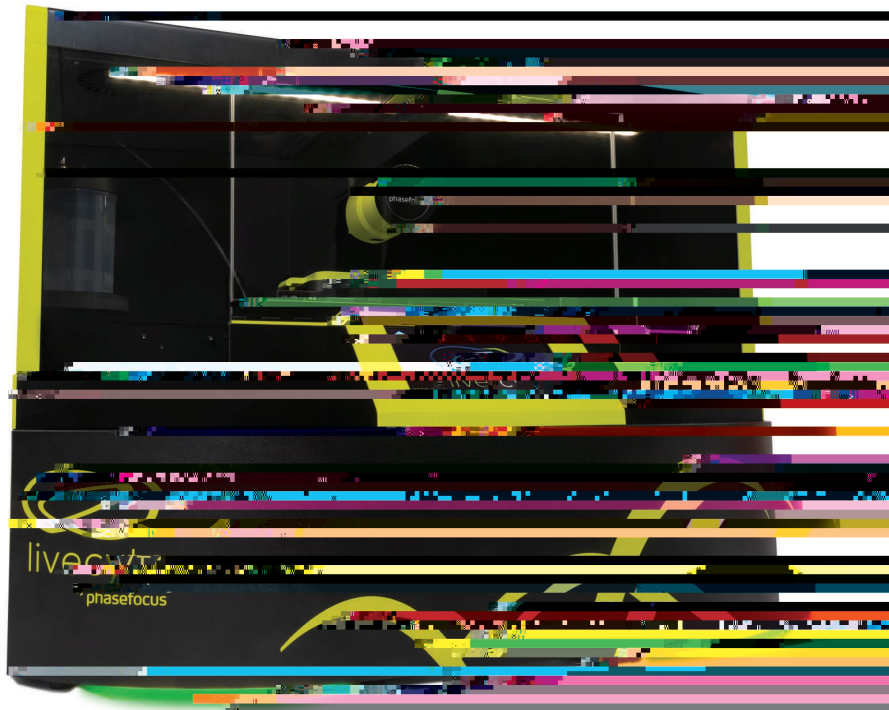


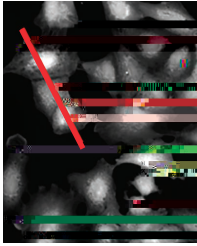
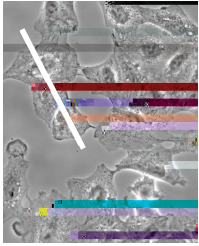
# Livecyte

Oiodub'F z upn duds



Qd\_tvssd'und'Q püpo'\_oc'Q psqhpIpgz  
pe'Hwdsz'F dII





# Imaging Modalities: Correlative Fluorescence

## Make Better Use of Fluorescent Labels

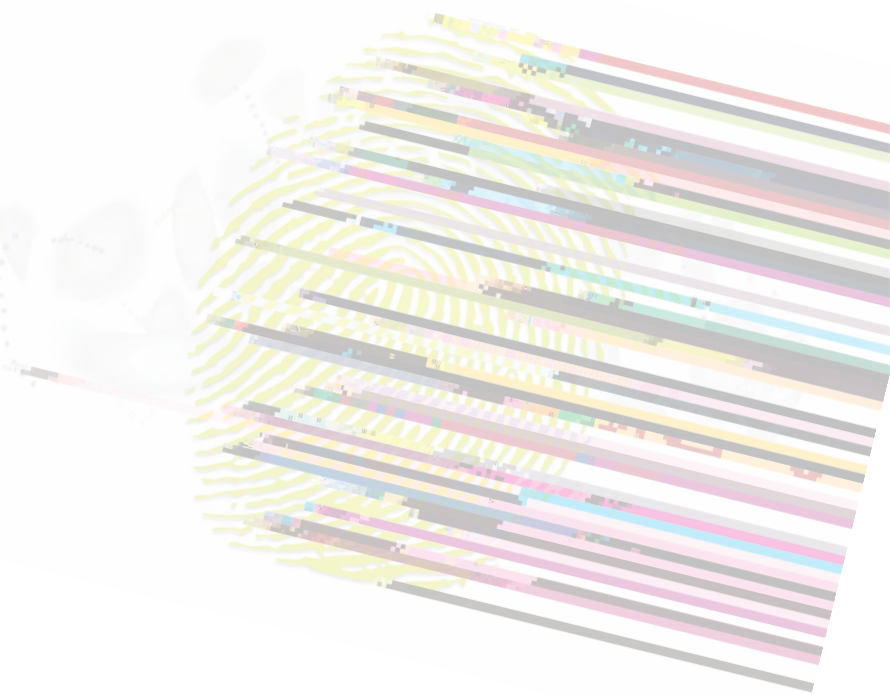
High specification camera and lenses can capture lower intensity images, allowing greater use of fluorescence with a reduced risk of photo-toxicity.

- High NA lenses.
- sCMOS camera.
- Full illumination from UV to far-red.
- Up to 7 filters.

## Smart acquisition

**Livecyte's** Smart functionality can acquire fluorescence channels at different rates. The system automatically corrects the focus for each channel, at every time point, ensuring every image captured is useable.

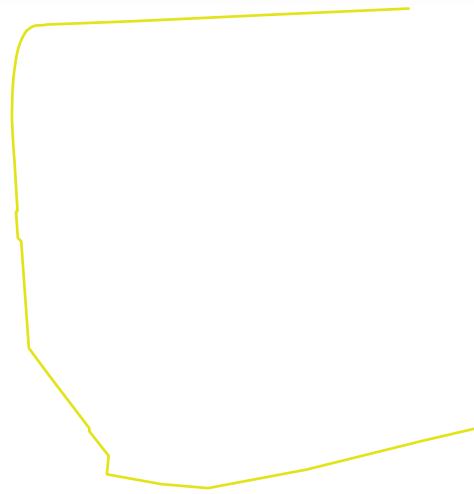
## Eliminate chromatic focus errors



# Closer to Real Life

## Smart Incubation – Full Environmental Control

- Wdudn qds\_ursd'əpn 'n aidouip 'flēPF 'ē PF
- Vd\_l'ün d'n poiupsioq'pēhvni iciz 'udn qds\_ursd 'FS<sub>2</sub>
- \_oc 'S<sub>2</sub>'\_ublpd'qspyin iuz 'p'bdllt
- F vlursd'bpociupot'\_vupn \_ub\_llz 'lpggdc'əps'dvəsz
- ün d'qpiou
- Dbbvs\_uldz 'bpsdl\_ud'bh\_ogdt 'io'bdll'adh\_vipvs'up
- bdll'dovšpon dou

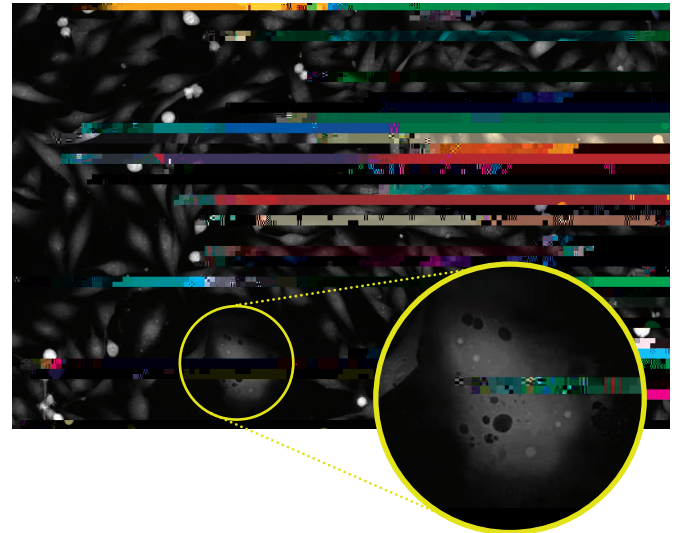


## Long Term Imaging High Resolution Large Field of View

Livecyte'llpx t'vtdst'up'kddq'n psd'bdllt'io'widx'əps  
lpogds'in qspwlog'uhd'likdlhppc'pēb\_qursioq's\_sd'dvədot

Dvupn\_udc'bpsdbūpo'pēhd'n doibtvt'llpx t'dvdo'bdllt'po'  
uhd'qdsiqhdsz'up'ad'\_o\_lz'tdc

Never miss that important event again

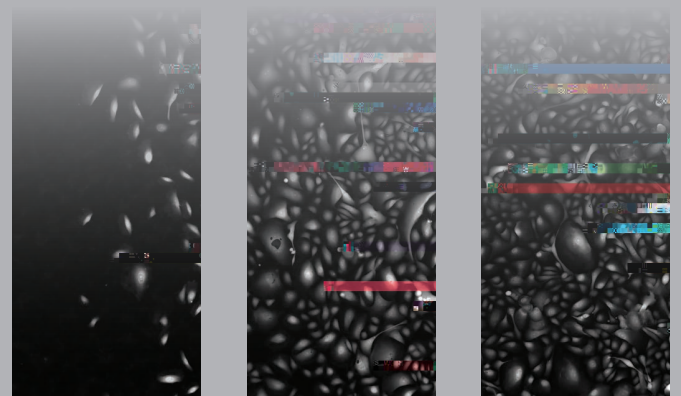


## Cells are Precious

Wh\_suiobva\_ūpo'\_oc'gdoud'in\_giog'dotvst'd'bdllt'  
sdn'\_io'w'\_ald'\_ūhd'doc'pēdvəsz'dyqdsin dou

Vdtd\_sbhdst'b\_o'sd vtd'bdllt'əps'tvatdr vdou  
bpn qldn dou\_sz'dyqdsin dou'tvqqpsioq'n psd'dyudotivd  
bdll'bh\_s\_budst\_ūpo

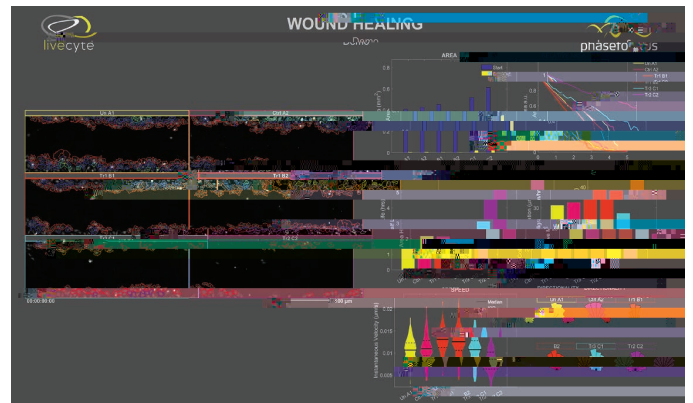
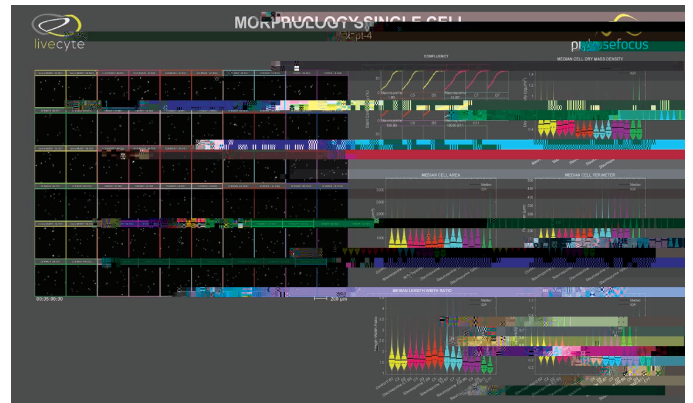
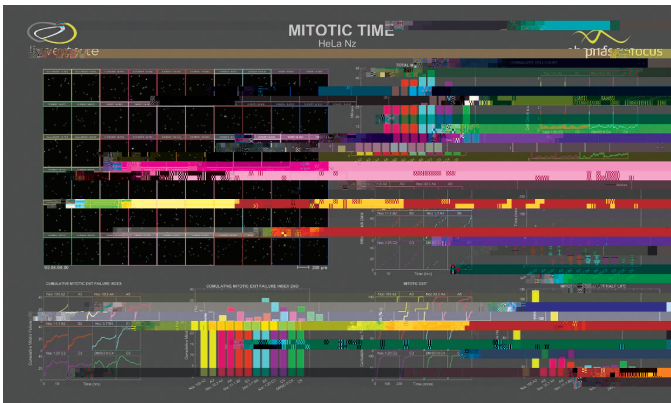
Livecyte just borrows your cells



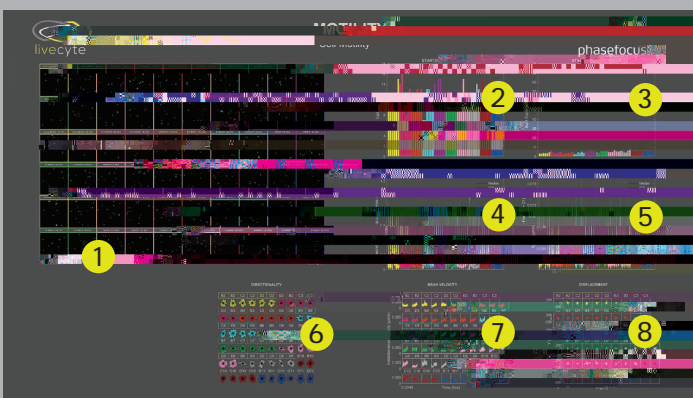
Primary cells measured over 72 hrs



Livecyte 'tpax \_sd' \_vupn \_ub\_llz 'bpn aiobt n vlü q\_odl wcdp'x ih'n vlü q\_s\_n dusb'c\_u 'ioip'\_'tiogld'G\_thap\_sc  
 øpsqvalib\_üpo'sd\_cz'pvuqvut



## Get the Full Story of How the Cell Population Behaves



F pn aiobt n vlüqld'n dusb't'\_oc'adh\_v'wpv's'p'w's'ün d'ip'  
 g\_io'\_'b'pn qsdhdotiwl'q'sp'ld'

### One Experiment, Multiple Outputs

- |                      |                        |
|----------------------|------------------------|
| 1. Qvlu q_odl wcdp   | 5. 'Wqddc'cit'üs'ävüpo |
| 2. Wü_s'bdll'bpvou   | 6. Gisdbüpo_liuz       |
| 3. Wü_s'ubpo'v'dobz  | 7. 'Qd_o'v'ølpbiuz     |
| 4. 'Qd_ocs'ög'io'cdy | 8. 'Gitql'_bdn dou     |

## Go Beyond Traditional Microscopy

Livecyte's bundle format provides the flexibility to develop your imaging capabilities as requirements and resources dictate.

Simply choose the bundle to suit your existing needs and supplement with additional functionality as and when necessary.

Go to [www.phasefocus.com/livecyte/bundles](http://www.phasefocus.com/livecyte/bundles) for details.

Phase Focus Limited  
Electric Works

S1 2BJ  
UK

T: +44 (0)114 286 6377  
E: [enquiries@phasefocus.com](mailto:enquiries@phasefocus.com)  
W: [phasefocus.com](http://phasefocus.com)

2018 © The trademarks Phasefocus and Livecyte, whether registered or unregistered are the property of Phase Focus Ltd. Phase Focus Ltd's methods and apparatus are the subject of various national and regional patents and patent applications, details of which are available on request